

BUCKS UNITED

UNITED WAY OF BUCKS COUNTY ANNUAL REPORT & MAGAZINE

UNITED WAY OF BUCKS COUNTY ANNUAL REPORT & MAGAZINE 2018

IN THIS ISSUE

CEO CORNER: GIVING
AS A CORE VALUE....35

FOOD ACCESS42

EDUCATION.....49



COMCAST IS PROUD TO SUPPORT
UNITED WAY OF BUCKS COUNTY!

MARCUS USED TO STAY
LATE AT SCHOOL TO WORK
ON HIS HISTORY REPORT.

NOW HE DOES HIS
RESEARCH FROM
HIS BEDROOM.

\$9.95
PER MONTH + TAX

NO TERM CONTRACT
NO CREDIT CHECK
NO INSTALLATION FEE
IN-HOME WIFI INCLUDED

LEARN MORE. DO MORE. SHARE MORE.

Internet EssentialsSM from Comcast brings affordable, high-speed Internet to your home and greater access to what's important to you. You may qualify if you have at least one child who is eligible for the National School Lunch Program or if you receive HUD housing assistance.

APPLY NOW AT
InternetEssentials.com 1-855-8-INTERNET

**INTERNET
ESSENTIALS**
from Comcast

Restrictions apply. Not available in all areas. Limited to Internet Essentials service for new residential customers meeting certain eligibility criteria. Advertised price applies to a single outlet. Actual speeds may vary and are not guaranteed. After initial participation, if a customer is determined to be no longer eligible for the program but continues to receive Comcast service, regular rates will apply. Subject to Internet Essentials program terms and conditions. Call 1-855-846-8376 for restrictions and complete details, or visit InternetEssentials.com. ©2016 Comcast. All rights reserved. Internet Essentials is a program to provide home Internet service for families. It is not a school program, and is not endorsed or required by your school. Your school is not responsible for Internet Essentials accounts.

Contents

FEATURES

- 3 Message from CEO Marissa Christie
- 5 Board of Directors 2017
- 61 United Way of Bucks County Staff
- 62 By the Numbers
- 64 Statement of Operations
- 65 Funded Programs
- 66 Thank You to our Leadership Donors
- 68 Thank You to our Partner Companies
- 71 Spirit of Bucks Organizations
- 71 Annual Breakfast & Magazine Sponsors
- 72 Community Award Winners
- 75 Member Agencies

LOCAL PERSPECTIVES

- 24 8 Reasons to Visit Bucks County
- 28 The Children's Museum: Learning through Play for ALL
- 30 Story Times at Bucks County Free Library: They're for Kids and Adults!
- 32 Volunteerism: Holiday Helpers You Can Count On
- 35 CEO Corner: Giving as a Core Value
- 36 Three Lessons from Audrey Tucker
- 39 Al Brown: Closing in on Hunger

AWARDS & RECOGNITION

- 7 Kelton Service Award
- 9 Paul Sauerbry Award
- 11 Campaign Volunteers of the Year Award
- 13 Distinguished Service Award

BUSINESSES GIVING BACK

- 15 Beneficial Bank: Doing What's Right from the Beginning
- 17 First Bank in the HEART of Bucks County
- 18 SUEZ: New Name... Same Commitment to our Community
- 21 BB&T: A Legacy of Helping the Community
- 23 Comcast: Building Solid Foundations for Stronger Futures

43



COLLECTIVE IMPACT FOCUS AREAS

- 41 How Our Donors Are Changing the World
- 42 Food Access
- 49 Education
- 57 Benefits & Financial Assistance for Seniors
- 58 Emergency Needs & Financial Stability
- 60 Housing & Homelessness

27



23



For a community to thrive, we all must do our part.

Thank you to the United Way of Bucks County for working to make sure there is food on tables, money in pockets, children in classrooms and roofs over heads.

The Bucks County Courier Times and The Intelligencer are working to do our part too. **We promise to be your truth seeker, your light shiner and your celebration multiplier.** It's why we are so proud of the work we do on topics like the safety of your drinking water and the epidemic of opioid abuse.

Knowledge is the power that drives a community to solve problems and achieve its collective potential.

We're proud to be your partner.

BUCKS COUNTY
Courier Times
CourierTimes.com

The Intelligencer
TheIntell.com





MESSAGE FROM PRESIDENT & CEO

An Eye on Continuous Improvement

Marissa Christie
President & CEO
United Way of
Bucks County

In late 2016, we announced a new funding cycle for nonprofits in our community; one that would break with more than 65 years of tradition.

Rather than funding dozens of programs in isolation, we now work within coalitions of nonprofits, businesses, local government, faith-based groups, and others to invest more strategically.

Together, we focus on providing nutritious meals for those who are hungry; forging a path home for those who are homeless; ensuring that there is help in a crisis for low-income families and seniors; offering care and education for children in need; and supporting our most vulnerable seniors.

Each coalition looks for the most effective (and cost-effective) solutions to some of the biggest, most complex problems. They develop a strategy, agree on shared goals, implement the programs, and measure the outcomes.

“Our vision is simple. We want our team — and the Bucks County nonprofit community — to be the best at turning resources into results.”

In one year, our results have exceeded expectations. On page 42, you can learn how Fresh Connect, the free, mobile farm market for low-income families, is changing the way people eat *and* improve their health.

On page 60, you can see how investing in a coordinated approach to street outreach for those who are homeless helped contribute to a staggering 22% drop in homelessness.

Throughout the magazine, you'll see the same themes again and again. We are working with more partners. We are offering more – and better – service to those who need our help. Everything we do is with an eye on continuous improvement and doing what's right for our community.

Our vision is simple. We want our team – and the Bucks County nonprofit community – to be the best at turning resources into results.

Being the best will take a lot of people pulling in the same direction. It will take donors willing to give generously, businesses ready to share time and talent, local government working in concert with nonprofits – and nonprofits willing to collaborate, even when it's hard.

I believe that we have what it takes to be the best here in Bucks County. I hope our community proves me right. 🙌

BEE BERGVALL & CO.
Certified Public Accountants

An accounting and business advisory firm serving the needs of individuals, corporations, not-for-profit organizations as well as municipal entities

We are pleased to also offer the consulting services of



Five Office Locations
www.bbco-cpa.com

215-343-2727
www.catalystnonprofit.com

inspire federal credit union  

SWITCH TO INSPIRE FCU TODAY!

Personal and Business Banking

Exceptional Service | Competitive Products | Convenient Access

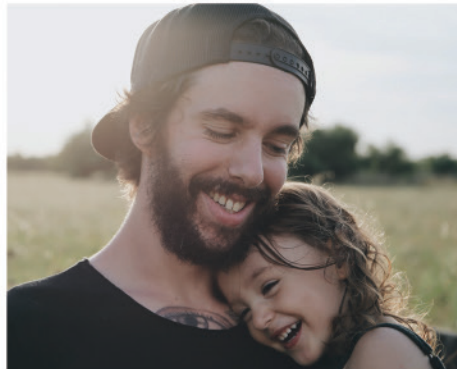
 Brian Phillips | 267.548.7004 | bphillips@inspirefcu.org

 Newtown | Langhorne | Bristol

www.inspirefcu.org • 215.788.5270



WE ARE PROUD TO **LIVE UNITED!**



Family Service is a nonprofit social service organization with locations throughout Bucks County. Our mission is to listen, care and help. Every day. For 64 years, we have been improving the lives of children and families, doing whatever it takes to help them overcome obstacles and reach their full potential.

Learn more at www.fsabc.org.



Board of Directors 2017

EXECUTIVE COMMITTEE

BOARD CHAIR

Brian Jeter
Comcast

IMMEDIATE PAST BOARD CHAIR

Michael Connor
Community Representative

VICE CHAIR, RESOURCE DEVELOPMENT

Steve Gallucci
Wegmans

VICE CHAIR, COMMUNITY IMPACT

Jeane Vidoni
Penn Community Bank

TREASURER

Kevin Crawford
Beneficial Bank

CORPORATE SECRETARY

Francis Sullivan, Esq.
Hill Wallack, LLP

DIRECTORS

Todd Alderfer

QNB Bank

Bob Caruso

Community Representative

Heiner Markhoff

SUEZ Water Technologies & Solutions

Catherine McElroy

Bucks County Community College

JoAnn Perotti

Bucks County Intermediate Unit #22

Martha Woglom

County of Bucks

HONORARY LIFE MEMBERS

Jacqueline Bowers

Dr. Gary L. Bowman

Kathy Brett

Lynn T. Bush

Richard O. Coe

Karen Dawkins

J. Peter Dominick

Thomas P. Donnelly, Esq.

James Dowling

Grover Friend

David J. Gondak

Trish Markel-Mulligan

Jack McCaughan

Harold Oswald, Jr.

Samuel M. Snipes, Esq.

Carl Wallnau, Esq.

Mark Worthington



We are proud to partner with the United Way of Bucks County to tackle food insecurity, emergency needs, homelessness through street outreach and senior needs in Bucks County.

Together we are bringing more resources to our fellow residents and changing lives.



Our mission is to reduce poverty and partner with the community to promote economic self-sufficiency.

**Hill Wallack LLP
is honored to support the
United Way of Bucks County.**

**Congratulations to award winners
Brian Jeter
and
Catherine McElroy**

**Hill
Wallack** LLP
Attorneys at Law

Francis J. Sullivan
fsullivan@hillwallack.com

Princeton, NJ | Yardley, PA | Cedar Knolls, NJ
www.hillwallack.com | 215.579.7700



Each year, a member of the United Way of Bucks County Board of Directors is awarded the Dr. Stanton Kelton Award. This long-standing award recognizes an individual who has made a significant contribution over the past year to the goals of the United Way of Bucks County and its mission in the community. This award honors the memory of Dr. Kelton, a compassionate and generous board member from 1966 to 1993, who was dedicated to advancing this community.

KELTON SERVICE AWARD WINNER

Catherine McElroy



This year, Catherine McElroy is being honored with this prestigious award. Catherine recently retired from Bucks County Community College where she served as Associate Provost of Academic & Curricular Services. Catherine is a member of United Way of Bucks County's Board of Directors and is being honored for exceptional contributions over the past year, which include heading up efforts on the stewardship committee. Catherine is kind, generous, and brings a level of class and sophistication to everything she does. She is valued, trusted, and admired by UW Bucks staff and fellow board members.

What do you like best about living and working in Bucks County?

The people of Bucks County are kind, caring, generous and resilient.

People in Bucks County often recognize and celebrate your commitment to the nonprofit community. What drives that commitment?

Who has influenced you?

I have been fortunate and appreciate that I have the opportunity to give something back. My strongest influence was my mother who taught us to always care for others.

Can you recall the first time in your life that you gave – time or money – to a nonprofit?

What do you remember about that experience?

At a young age I had the chance to work regularly with the elderly. Seeing the impact of one-on-one work has remained with me.

What are some of the organizations and causes that you are most proud to support in Bucks County? Why?

I see the need for education at all levels and ages and hope to continue to be active in such organizations.

What has been the most rewarding or memorable volunteer experience you've had through UW Bucks?

I've had the chance to speak directly to and work with individuals who have benefitted from the good work of United Way Bucks. I hope everyone has the opportunity to hear their stories and see the impact of our good works.

What would you tell someone thinking of getting involved with a Bucks County nonprofit?

We have all been given gifts. Look for opportunities to use the gifts you have been given and you will see how they multiply in the lives of others.

If you could change one thing about Bucks County, what would it be?

Nothing is ever perfect, but I like Bucks County the way it is.

What might people be surprised to know about you?

I was born in Hell's Kitchen. When people ask where I am from I still think of New York as my home base.

What is your favorite place to travel?

I like the peace and tranquility of the mountains.

What is your favorite thing about retirement so far?

I'm still waiting to get a sense of retirement! 🍷

“Look for opportunities to use the gifts you have been given and you will see how they multiply in the lives of others.”



Proud to Support



United Way of Bucks County

Morison Cogen LLP has been advising businesses, individuals, and not-for-profit organizations globally for over 60 years.

Our team can be an exceptional resource for you to rely on for your accounting needs. We're not just about the numbers.

Our goal is to provide support, advice and guidance every step of the way as your business and your life evolves.

- Accounting & Auditing
- Financial & Estate Planning
- Information Technology & Support

- Domestic & International Tax Planning
- Litigation Support

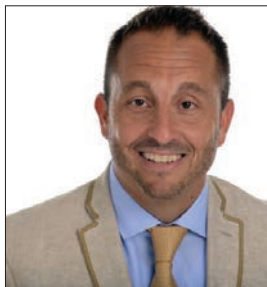




The Paul Sauerbry award is given annually to a volunteer who, over an extended period of time, has demonstrated commitment to the community through innovative leadership, stimulus for volunteer action by others, courage to overcome obstacles, and dedication and creativity in the development of programs to meet community needs. The award honors Paul Sauerbry, President of United Way of Bucks County from 1964 to 1974.

PAUL SAUERBRY AWARD

Brian Jeter



This year, Brian Jeter is being honored for his dedicated service. Brian has been a long-time supporter of UW Bucks both as a leadership donor and Board Member. He has served as Chair of the Governance Committee, and most recently as Board Chair. His business acumen and leadership skills have been invaluable in setting strategic priorities and navigating the changing philanthropic landscape. Brian's commitment to staff and fellow board members has been deeply felt and is greatly appreciated.

Your peers on the United Way of Bucks County board of directors and governance committee recognize you as someone who demonstrates exceptional leadership and dedication. What inspires you to serve your community?

I have a genuine passion for serving others. I was born and raised in Northeast Philadelphia where we grew up helping neighbors, learning about community service, and so on. Because this region has given me so many opportunities and experiences, I want to ensure other people have access to the same opportunities and successes I have had. The Bucks County community is an amazing place to live and raise children. This community has supported me and my work so I am inspired to help others in Bucks the way they have helped me.

How did you first get involved with United Way of Bucks County?

In 2013, we (Comcast) wanted agency speakers in Bucks County to tell their stories to employees during our UW campaign.

Why do you continue to support UW Bucks?

The programs, the community organizations, and more importantly the people who benefit from our collective work inspires me to continue to give back to UW Bucks.

What other causes or organizations do you support?

While my primary focus has been United Way of Bucks County, I also support Buck-Up-Bucks campaigns and Matt's Mission (NAC) for ALS research.

In your opinion, what is the best way to inspire the next generation of donors, advocates, and volunteers?

The best way to inspire is through authenticity. Find something you are passionate for and care about. Then, be enthusiastic, earn trust and respect, listen, show progress, acknowledge others, and commit.

Can you recall the first time in your life that you gave – time or money – to a nonprofit? What do you remember about that experience?

What I remember most is working with non-profits via Comcast Cares Day and appreciating those experiences through the eyes of my children. We often talk about people we met that day or ways we helped the people at the Emergency Shelter in Levittown, Libertae in Bensalem, or recently BKO Hunger.

If you could change one thing about Bucks County, what would it be?

The perceived divide in Lower, Central, and Upper Bucks.

Who would play you in a movie of your life?

Liev Schreiber (aka Ray Donovan)

Where is your favorite place on earth?

Any beach with my family.

What might people be surprised to know about you?

I have had six eye surgeries in my life. 🙄



We put our energy into the community.

At PECO, our employees invest thousands of volunteer hours and we contribute more than \$5 million each year to help our communities grow and prosper. We also champion efforts that impact education, the environment, arts and culture, and community enrichment.

PECO proudly supports United Way of Bucks County. Thank you for improving lives by mobilizing the caring power of communities in Bucks County.

Find out more at www.peco.com/community



The Campaign Volunteers of the Year award recognizes the year-round creative work of an individual or team in support of a United Way of Bucks County campaign. Winners use best practices, imaginative special events, and strong communication plans to get their colleagues involved. Whether they're called campaign coordinators, campaign volunteers, or ECCs, these are the volunteers who plan, monitor, communicate, and advocate to ensure success. They are, without question, some of the most important and impactful United Way volunteers.

CAMPAIGN VOLUNTEERS OF THE YEAR AWARD

The Team at Bucks County Community College

This year's award goes to the team at Bucks County Community College, including Rodney Altemose, Amy Balbi, Lynn M. Bintliff, Patricia Brining, Kathleen Fedorko, Kathy Rose, and James Sell. Assembled for the first time this year, this team ran their campaign like a group of seasoned pros and nearly tripled their participation rate. They brought passion and enthusiasm to everything they did. Through their work at the college, their volunteer efforts in the community, and their leadership, our friends at Bucks County Community College are clearly committed to having an impact in Bucks County. To see how they did it, we asked the team what made them so successful.

What are the top 3 or 4 things that made your campaign at Bucks County Community College so successful?

Our energy was contagious....we kept it very positive....we also tried to be very transparent with the college community with our goals....it all seemed to work.



ALL-STAR TEAM

It was super important to have volunteers who believe in the mission of the United Way. This team was amazing—from day one, we all had fun together!

COMMUNICATION

To ensure that employees at all three campuses received communication about all the exciting happenings throughout the campaign, each member of the team was responsible for a specific area to email. We also took turns putting notices on the MyBucks portal ensuring that everyone was able to share in our excitement over our achievements. The team approach to communication worked great in getting the word out!

SUPPORT

Dr. Shanblatt's support was very evident. She emailed the entire college community asking for their support, she attended some of our meetings and gave time at some of her meetings for us

to share the good news about the United Way campaign. Additionally, CulinArt graciously donated ice cream for our campaign kickoff as well as cookies for a lunchtime fundraiser.

ENTHUSIASM

The team credits much of their success to their team chair, Rodney Altemose, who was so enthusiastic about the prospect of getting more and more Bucks employees involved in helping the United Way. Rodney's leadership and enthusiasm inspires students every day, and the team reaped the benefits of his motivating personality. On the whole, we really did have a great team with a lot of good and fun ideas. Everyone was willing to help with our promotional events. It's always a blast working with dedicated and caring people. We have a lot of those at Bucks. 🙌

“It's always a blast working with dedicated and caring people.”

**Proud supporter of
United Way of Bucks County**



PennCommunityBank.com

215-788-1234      

Banking | Lending | Insurance | Investments

30 Years of Service to UW Bucks: Patricia Winslow Gallagher



2017 marked Pat Gallagher's 30th year with United Way. It seems only appropriate that as we review our year in the annual report, that we honor Pat for her dedication and service. In doing so, we asked Pat to look back and look forward a bit.

You've been with UW Bucks for more than 30 years, what is your first or most vivid memory of the organization?

My first and most vivid memory was my first day on the job. I was told there would be a board meeting that evening. Talk about baptism by fire!

What would you like to see UW Bucks accomplish in the next 30 years?

I'd like to see UW Bucks work with the next generation and continue to show there's a better way to raise money, work together, and solve problems.

What has been the most rewarding part of working at UW Bucks?

Seeing how our County rallies around our signature events such as Bucks Knocks Out Hunger and Stuff the Bus. These programs enrich so many lives of children and adults by providing nutritious foods and necessary school supplies.

What have been the biggest changes you've seen in Bucks County?

I've seen a lot of changes at the large corporations in Bucks County—places like US Steel, Rohm & Haas, GE, Lockheed Martin, and others. Some have downsized, some have left, and others have merged. Many of these corporations have had a major influence in all of our neighborhoods.

Do you have any advice for the next generation of nonprofit leaders?

Remain motivated and keep your eye on the goal.

What's one thing people might not know about you?

I'm very dedicated to my cats, family, and my church. I am also a WWII history buff and my most wonderful experience ever was to fly in a B17 WWII Bomber a few years ago at a WWII air show. 🇺🇸

For over 160
years, we've
tried to do
what's right for
our customers
and our
community.

We're always proud to support
those who do the same.

That's why we proudly support the United Way of Bucks
County for making a difference and doing what's right.

Member
FDIC

thebeneficial.com 888.742.5272

Beneficial_{BANK}

True to our name. Since 1853.

Doing What's Right from the Beginning

Beneficial^{BANK}

True to our name. Since 1853.

“

Participating in Blue-Gooder volunteer initiatives enables our employees to give time to make the most impact in the communities we serve.

”

In 1853, Beneficial Bank was founded on the belief that Philadelphia's immigrant population needed – and deserved – a secure place to keep their savings.

By 1927, their employees were out in the community teaching the children of Philadelphia how to save through a pioneering initiative called Beneficial In School Savings Program.

Beneficial invested in Corporate Social Responsibility, in financial literacy and serving the “unbanked,” decades before it was de rigueur.

Now the oldest and largest bank headquartered in Philadelphia, this team still puts people, businesses and communities of the Philadelphia region first, operating under a simple, guiding principal: Do what's right.

Doing what's right means lending a hand; helping communities grow stronger; and showing neighbors how to get ahead and become financially self-sufficient.

It means dispatching scores of employee volunteers, affectionately known as “Blue-Gooders,” when a nonprofit needs some support. It means acknowledging that the only way we change the world is together, united, and one community at a time.

“Our Blue-Gooders make up such an important part of our employee culture. Participating in Blue-Gooder volunteer initiatives enables our employees to give time to make the most impact in



the communities we serve,” says Robert Juliano, Beneficial's Director of Community Development.

Kevin Crawford, Vice President, Commercial Lending, at Beneficial Bank and United Way of Bucks County's Finance Committee Chair agrees. “As a local bank in the Philadelphia region, it's great that we can lend a hand in the communities in which we live and work,” he says.

While the Blue-Gooders share their time and talent with many organizations in the Philadelphia region, there is a common thread that runs through many projects: Beneficial works to support youth and education; to stabilize and revitalize low- and moderate-income communities; and to help children and families in crisis.

With more than 165 years of giving time, talent, and treasure to change lives, this team proves that when you do what's right, it is always Beneficial. 🍌

Member FDIC



**First Bank is a proud
supporter of the
United Way of Bucks County.**



FIRST BANK

Doylestown • Warminster *+10 Locations*
Trevose • Bensalem • Levittown *in NJ*

877-821-BANK (2265)

firstbankpa.com



First Bank in the HEART of Bucks County



Each day, United Way of Bucks County partners with businesses and community members to provide programming and resources that support self-sufficiency and give those in need a hand up. First Bank employees have given countless hours of their time and effort through the years. The number of volunteers continues to grow each year.

by Gwendelyn Fisher

Retail Marketing Coordinator, First Bank

When it was announced that food pantries in Bucks County were critically low on reserves, First Bank employees heard the call and sprang into action. First Bank team members—many of whom worked at Bucks County Bank when it merged with First Bank in September, 2017—live in the communities they serve. They know that hunger isn't always visible. That's why Bucks County branches have collected food donations for United Way's Operation Helping Hand for several years.

participating in United Way events increase. They know the importance of coming together and making a difference."

Also popular with the Bucks County associates is Bucks Knocks Out Hunger. What began as a handful of volunteers several years ago grew to a full table of helpers in 2017. "I had seen pictures from the first year my co-workers participated, and it looked like a fun way to help out. It's amazing to be part of an operation that touches so many lives," said Gina Menezes, Branch Manager of the Bensalem Branch. 2018 will be Gina's third year of helping out with BKO.



Left: Bensalem team members Alena Maliszewski and Joan Fairweather of the Bensalem branch with their Operation Helping Hand donation box.



Right: Trevose employees at the Trevose branch are pleased to see their collection box overflowing with donations.

When the customers see the First Bank team members excited about giving back, they get energized and the food donations pour in.

"Our employees are very thoughtful, and very giving of their time and effort," said John Harding, President of First Bank's Pennsylvania Division. "Over the past several years, we have seen the number of employees

First Bank employees aren't the only ones with big hearts. With five branches in Bucks County, First Bank is committed to supporting their communities through the United Way and other charitable organizations in the area. That's why First Bank is proud to be a Platinum Sponsor for the United Way Bucks United Breakfast & Annual Magazine. 🍷

“Our employees are very thoughtful, and very giving of their time and effort.”

SUEZ: New name...Same Commitment to our Community



SUEZ Water Technologies & Solutions (formerly GE Power & Water) has been a corporate partner of United Way for many years. Hundreds of SUEZ employees give their support through the annual campaign, advocacy, and volunteerism.

by Mark Klaiber
ES Business Excellence Leader

They say that the only constant in life is change. This adage was especially appropriate for the GE team in 2017. Having been acquired on October 1st 2017, and embracing our new identity as SUEZ, you can imagine that the team had a few questions, including, what does this change mean to our partnership with United Way and our activities throughout

Bucks County? The answer was simple and direct: New name...Same commitment to our community!

Same commitment to Knock Out Hunger in Bucks County! The SUEZ team continues to show that you should never underestimate what more than 100 volunteers can accomplish together. Throw in a little friendly competition, and you have never seen so many boxes of rice and beans packaged so quickly.

Same commitment to our future! Rarely is



“We take pride in knowing our commitment to the United Way of Bucks County won’t change.”

there more energy around our campus than when we have the kids join us in the office. Bring a Child to Work day is a fun opportunity to take away some of the mystery of corporate America, and share what we do with our children. The Fall brings our always spooky Safe Halloween Trick or Treat event. By transforming our Training Center into a ghoulishly fun haunted house, we create the perfect environment for hundreds of local children to enjoy more treats than tricks in a safe environment.

Same commitment to our annual United Way campaign! Sports and competition were top of mind for our 2017 campaign, aptly themed “Get in the game!” Annual crowd-favorite activities such as the chili cook off, beanbag toss, and bowling night ensured that we kept the “fun” in fundraising. We even thought a little outside the box this year by adding an Escape Room challenge, to test the team’s brains, as well as their brawn. Beyond the fun of the month-long campaign, the true impact of what we do was passionately reinforced by representatives from the United Way supported organizations at our opening and closing events, underscoring the impact our efforts make on our Bucks County neighbors.

While 2018 will undoubtedly bring more change to the SUEZ team, we take pride in knowing our commitment to the United Way of Bucks County won’t change. The passion and energy our team shows for our community continues to be a pillar of our company that transcends change, and we couldn’t be more excited for our continued partnership with the United Way. 🍷

1 SUEZ volunteers after loading a truck full of food. SUEZ has been a strong supporter in the effort to fight food insecurity in Bucks County.

2 While the name on the shirt changes from GE to SUEZ, the enthusiasm and dedication remains as high as ever.

3 As one of the top UW Bucks campaigns SUEZ leaders are always happy to take home a trophy or two from the annual breakfast.

4 SUEZ’s 2017 campaign, “Get in the Game,” featured lots of sports-themed activities and events.



Making a united effort to strengthen the community.

Customers Bank is proud to sponsor the Bucks United Pep Rally & Annual Magazine

Customers Bank is a community bank, with local ownership and local decision makers. Our employees live in the communities in and around our branches, and know many of our customers by name.

That's why we're so proud to support the Bucks United Pep Rally & Annual Magazine as we gather to celebrate the many ways in which we're changing lives together in Bucks County. The United Way's tireless efforts to improve access to education, income and health here at home in our community mean the world to all of us at Customers Bank.

Customers Bank
customersbank.com



Need Computer / Network Help?

Proudly serving the UNITED WAY since 2005

Full-Service Network and Computer Consultants

Data Backup & Recovery
Repairs & Maintenance
Virus/Malware Removal
Cloud Services
Web & E-mail Hosting
Major Credit Cards Accepted

Business Computer Services

150 East State Street
Doylestown, PA 18901

www.carisma.net

215-CARISMA

carisma
Computers • Networks • Web Sites



CALL THE BEST!



VOTED #1

A Legacy of Helping the Community



Bottom left: Since 2009 BB&T associates have contributed more than 500,000 volunteer hours.

Bottom middle: The Lighthouse Project, a nationwide community services program, gives BB&T associates the opportunity to roll up their sleeves and go to work landscaping, painting, and making a difference in their community.

Bottom right: The BB&T team hard at work packing meals to support families in Bucks County.



by Mike Rainone
Market President, Bucks and Montgomery Counties

When communities thrive, families realize financial stability and children have a clearer path to bright futures. BB&T and UW Bucks strive every day to make the communities in which we work and live a better place to be. Giving back is a cornerstone of BB&T's mission.

Established in 1872, BB&T has always believed that giving back is the most important part of being a good corporate citizen. Looking toward the future, the BB&T team is committed to sharing their strength and knowledge to enrich local neighborhoods through community development, leadership, and innovation.

I give because I am fortunate enough to be in a position to help others. My colleagues give for similar reasons. At BB&T, there is a culture of compassion and service. Not only do our team members give to the annual campaign, but we focus on financial education and support our local communities through our volunteer efforts.

BB&T is proud to continue our support of United Way of Bucks County through Bucks Knocks Out Hunger, sponsoring the #girlSTEM Conference, and by being a Platinum Sponsor of the Bucks United Breakfast & Annual Magazine. 🍴



The Enterprise Way

Supporting the community. That's the Enterprise Way.

*Proud supporter of the
United Way of Bucks County.*



©2015 Enterprise Rent-A-Car. F04552 3.15

Don't Sacrifice

Get the technology you need with the service you deserve from

THE *First*™ NATIONAL BANK
& TRUST CO. OF NEWTOWN



Mobile Payments



Online Banking & Billpayer



Mobile Banking & Deposit



12 Branches in Bucks County | 215.860.9100 | www.fnbn.com



Building Solid Foundations for Stronger Futures



by Janet Steiner
Manager of Government Affairs

Technology is a powerful driver of innovation and economic growth. That's why Comcast NBC Universal is investing its resources in ways that help communities realize the transformative potential of media and technology to solve problems, improve lives, and to create opportunity. Comcast NBC Universal is committed to increasing access to technology, providing skills that help individuals fully participate in the digital economy, and empowering innovators, entrepreneurs and its own employees to use media and technology for good. Additionally, Comcast NBC Universal is harnessing its strength in numbers to improve the world through efforts like Comcast Cares Day—the nation's largest single-day corporate volunteer event, which amplifies Comcast's year-round commitment to giving back to the communities where its employees live and work. Comcast NBC Universal is unwavering in its commitment to connect our communities with the resources that matter most to their success—and helping them build solid foundations for stronger futures. 🍌

Left: Volunteering and giving back to the community is a family affair for many Comcast NBC Universal team members

Bottom right: The folks at Comcast NBC Universal always show up in force and ready to help pack more than 100,000 meals at Bucks Knocks Out Hunger.



LOCAL PERSPECTIVES

8 Reasons to Visit Bucks County in 2018

Bucks County, Pennsylvania, the bucolic countryside backyard of the City of Brotherly Love, is gearing up for an exciting new year. From monumental anniversaries to historic developments, a visit to Bucks County, PA is a must for 2018! Here's what's new in Bucks County for the year ahead.

by Visit Bucks County



Washington Crossing park river and bridge

Photo courtesy of Washington Crossing Historic Park



Gazebo music during Peddler's Village Bluegrass & Blueberries

Photo courtesy of Peddler's Village

1 Washington Crossing Park Reopens Thompson-Neely Mill

Originally built in 1875, The Thompson-Neely Mill was closed in the 1980s and renovations began in 2016. This spring the Mill reopens to the public as a period-accurate mill that turns wheat into flour, just as it did more than a century ago!

2 Peddler's Village Expands Annual Events with "Summer Food & Music Festival"

Peddler's Village adds a brand-new event to their line-up. The "Summer Food & Music Festival" will be held June 23-24 to kick-off the summer season with a weekend of food, music, boutique shopping and Village family fun.



The 8th annual Washington Crossing Spring Brewfest will be held on Sat., May 5. The festival features more than 130 beers from more than 60 regional and national breweries, live music and multiple food vendors.

Photo courtesy of Washington Crossing Historic Park

3



Inside Parx Casino's Xcite Center

Photo by Michael Spain Smith,
courtesy of Parx Casino

3

Parx Casino's Xcite Center

and Two New Restaurants. Parx Casino's Xcite Center entertainment venue opened with its first show on January 13. This year's exciting line-up includes Joel McHale, Melissa Ethridge, Trevor Noah, Colin Mochrie & Brad Sherwood, and more. The \$50 million expansion adds 45,000 square feet to the Bensalem property and includes two new restaurants, Oliveto and The Liberty Bell Gastropub.

4



New Hope Pride Rainbow Flag

Photo by Anthony Sinagoga

4

New Hope Celebrates 15th Annual Pride Festival

Pride Fest. New Hope Celebrates, Bucks County's leading LGBT organization, marks its 15th annual Pride Fest. Kicking off Pride is the Pride 5k Run on May 12th. Celebrate "The United Colors of Love," May 18-20 with a parade and fair in New Hope and Lambertville.

5

Jose Garces Comes to New Hope.

This summer the Bucks County Playhouse gets a new neighbor. The Playhouse Inn opens with 12 rooms and a 7,000-square-foot farm-to-table restaurant run by Iron Chef Jose Garces.



The iconic Bucks County Playhouse will get a new neighbor this summer when the much anticipated Playhouse Inn opens.

Photo courtesy of Visit Bucks County

5

6

The James A. Michener Art Museum in Doylestown houses a large collection of Pennsylvania Impressionist paintings and works by significant local and regional artists.

Photo courtesy of Visit Bucks County



6

James A. Michener Art Museum Celebrates its 30th Anniversary.

The James A. Michener Art Museum in Doylestown, will celebrate its 30th anniversary in 2018 with notable exhibitions, including a spotlight on its extensive permanent collection, and programs such as Jazz Nights, lectures, gallery talks, concerts, films, a Broadway Cabaret series, and more. A special exhibit called 'In the Museum We Trust: 30 Years of Art at the Michener' will be on display from September 15, 2018 – January 6, 2019.

7

Doylestown Marks Bicentennial Anniversary in 2018.

The town of Doylestown marks its bicentennial anniversary in 2018! The township's bicentennial committee has several events planned, including a birthday event for Oscar Hammerstein II in July at Highland Farm, a competition to design a new township flag, and a time capsule to be sealed under the grounds of the new municipal complex.



Doylestown, home to museums like the Mercer Museum marks its bicentennial anniversary in 2018.

Photo courtesy of Visit Bucks County



8 Sesame Place Debuts Oscar's Wacky Taxi.

Sesame Place kicks-off their new season with a special Opening Day parade on April 28, showcasing a year of exciting events. Plus, Sesame Place is introducing their newest rollercoaster, Oscar's Wacky Taxi, in late spring. 🍌



Photos courtesy of Sesame Place

“

*The
10,000-square-
foot museum
features
interactives
encouraging
children
to let their
imaginations
run wild.*

”

The Bucks County Children's Museum: Learning Through Play for ALL

by Kelly Krumenacker

Founder & Executive Director, Bucks County Children's Museum

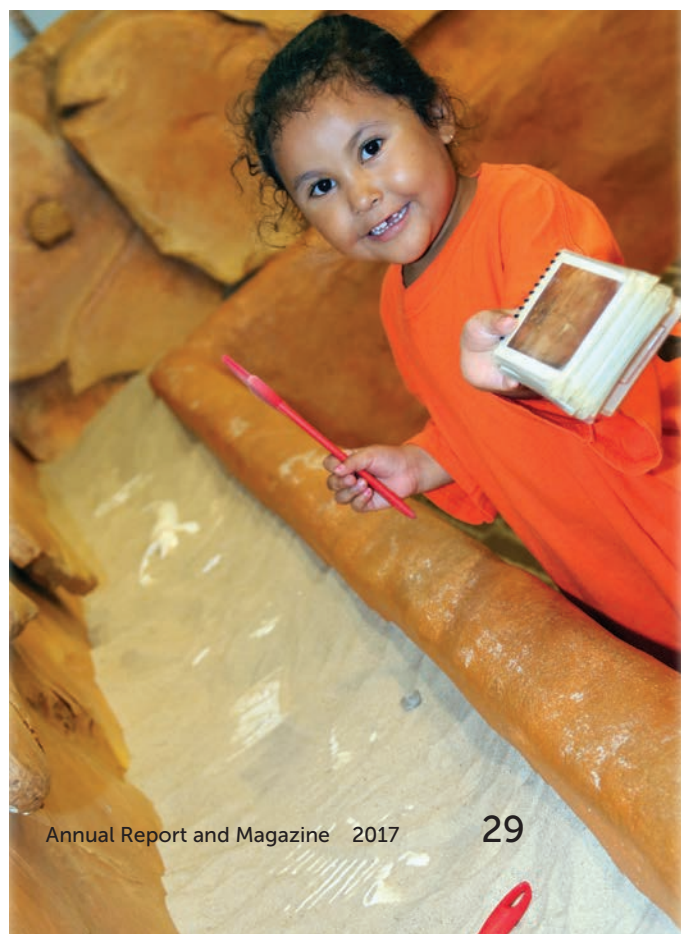
Founded in 2006 by a group of local educators and business leaders, the Bucks County Children's Museum in New Hope, PA, has been dedicated to its mission of providing an environment that connects ALL children to the world around them and inspires learning through play. With a focus on ages 1-7, the 10,000 square foot museum features interactives encouraging children to let their imaginations run wild. Kids can become paleontologists and unearth fossils, design a racetrack, work in a general store, drive an ambulance, float a boat down the Delaware and much more!

"Expanding the museum's reach into the community is a priority for our leadership," according to board chair Tim Schuback. The museum offers a variety of access programs in order to reach families who may not be able to afford

museum admission. Reduced or free admission is offered through Electronic Benefit Card discount programs, summer military passes, and library "Check Us Out" passes. The Bucks County community plays a key role in the museum's reach and growth. Local foundations including The Connelly Foundation, Foundations Community Partnership, and The Bucks County Foundation provide support for access programs, while like-minded organizations and local businesses such as Doylestown Health, Bucks County Audubon Society, The Arts & Health Collaborative, Weis Markets, and PECO provide educational programming partnerships as well as financial support for new exhibits and programs. 🍕

LEARN MORE

www.buckskids.org



Story Times at Bucks County Free Library: They're for Kids and Adults!

*by Michelle Wexler
Development Director,
Bucks County Free Library*





Children love attending storytimes at Bucks County Free Library because storytimes are fun! Parents and caregivers love storytimes because they offer kids more than stories, songs, and opportunities to move around and act silly. With their focus on books, oral and written stories, and conversation, BCFL storytimes are early literacy experiences that instill a love of reading and learning in children and prepare them to read and write when they enter school.

But BCFL story times aren't just for kids. Adults benefit from these programs, too — they get to meet new friends, learn early literacy tips, build their children's vocabulary, and watch their children grow and learn.

BCFL offers six types of storytimes: baby, toddler, preschool,

family, pajama, and sensory. Pajama storytimes, which take place in the evening, are ideal for families who can't make it to the library during the day. Sensory storytimes are perfect for children who are differently abled, on the autism spectrum, have sensory processing issues, or feel overwhelmed by noises or crowds.

Staff trained in early literacy lead storytimes. Most programs are 30 minutes long, and all include stories, action rhymes, music, and fun.

To make the most of storytimes, BCFL advises parents and caregivers to attend storytime on a regular basis, practice storytime rhymes and songs with children at home, and discuss the books read at storytime.



LEARN MORE

For storytimes, visit
calendar.buckslib.org



Volunteerism: Holiday Helpers You Can Count On

For three years now, Paul Mullen and his team from Janssen Pharmaceutical Companies of Johnson & Johnson have put on their santa hats and their Live United t-shirts to make a little magic happen. They swing by the UW Bucks office to help coordinate buying and sorting holiday gift cards for kids in need.

Paul and his team really enjoy this “Day of Caring” project. As they’re out purchasing gift cards for United Way’s Holiday Gift Card Drive, they make it a point to let everyone know what they’re doing and who they’re helping. That enthusiasm has even gotten a few stores to add extra gift cards in support of the kids.

When asked about their volunteering,

Paul said, “As employees of Janssen Pharmaceuticals, we share a strong commitment to support the communities in which we live and work. This responsibility is embedded in our Johnson & Johnson Credo.”

Paul continued, “each year Janssen sponsors a ‘Day of Caring,’ where employees are encouraged to volunteer as teams in their local community. Last year our team participated



1 The team of holiday helpers from Janssen Pharmaceuticals

2 Janssen volunteers help purchase and sort gift cards before distribution.



in two different service events with United Way of Bucks County – at the Fresh Connect farm market and at the Holiday Gift Card Drive. These service projects provide an opportunity to support our local community and also bring us together as a team.”

As the Holiday Gift Card Drive grows, UW Bucks is counting on Paul and his team of Holiday Helpers even more. 🧡

This year, many kids also got books as part of their holiday package.



STIFEL

We are pleased to support the
United Way of Bucks County
Congratulations to this year's Honorees

The Gormley Furlong Group

Timothy P. Gormley, CFP®
Senior Vice President/Investments

Paul M. Furlong
Senior Vice President/Investments

Kevin M. Keane, AAMS®
Vice President/Investments

Kathleen M. Zelenka
Financial Advisor

(215) 504-1600 | (800) 223-7635

1020 Stony Hill Road, Suite 100 | Yardley, Pennsylvania 19067

Stifel, Nicolaus & Company, Incorporated | Member SIPC & NYSE | www.stifel.com

Parx Casino® is Proud to Support United Way of Bucks County!



**parx
casino®**

What a night!

**Street Road Exit off I-95 or PA Turnpike
parxcasino.com**

GAMBLING PROBLEM? CALL 1-800-GAMBLER

Giving as a Core Value



Alex Gorsky
Chairman & CEO, Johnson & Johnson

“At Johnson & Johnson, giving has many meanings—we give our time, our talent, and our resources to support the communities in which we live and work around the world, a core component of our company’s values.

I especially encourage people to spend time volunteering. What is special about engaging in a volunteer activity and sharing your personal talents and resources, is that you can make a direct positive difference in someone’s life, and the reward for that just can’t be matched.”



Heiner Markhoff
CEO, SUEZ Water Technologies & Solutions

“Charity and giving back to the community is extremely important to me and to our entire organization. It is important for us to come together as a team and help the people that live in the same communities in which we live and work. Every day, I see the good things our team does to support local families, to help build sustainable lives, and to really set an example for the neighborhoods in which we live. I am very proud to lead a team so dedicated to community work and to making a difference in the lives of those who need help.”



Dr. William J. Gretzula
Superintendent, Pennsbury School District

“I have been proud to partner with the compassionate leaders of United Way of Bucks County for over a decade because of the many ways they support families throughout all of Bucks County. I have seen firsthand the impact our campaigns have on the families in our communities.

Supporting the financial stability, health, and education of our neighbors in need means they have access to opportunity and care. As an educator, it’s important that leaders in every community see the benefit of investing in families—in particular the Pre-K scholarships and parental education programs that prepare our kids to enter school ready to learn.”



Jeane Vidoni
President & CEO, Penn Community Bank

I encourage our team members to understand that supporting the community is an investment in our future—both personally and professionally. First, many of us have had personal experiences, directly or indirectly, that have included receiving help from our local, non-profit support systems. Second, we can be part of the solution to our community’s issues by giving, not only with dollars, but with our time and expertise. Giving is nothing more than an extension of our service culture and the recognition that we are not just doing business in our communities; we are a responsible and caring member of our communities. I don’t have to do much encouraging—our team members surprise and delight me every day with their volunteerism and interest in helping others! 🙌

Three Lessons from Audrey

by Marissa Christie

President & CEO, United Way of Bucks County

Audrey Tucker passed away peacefully on February 20, 2018. She was with Family Service Association of Bucks County for more than 40 years; she served as Executive Director for more than 30 years. Her presence loomed large in Bucks County. She was a leader in every sense.

Audrey was one of the first people I met with when I was appointed CEO in late December 2016. I was, perhaps understandably, both excited and nervous about the new position. Excited because I am passionate about the work we do at United Way of Bucks County.

Nervous because I was just a couple of weeks from having a baby (plus, there was a toddler already at home) – and I was acutely aware of how little I know compared to people like Audrey.

At that meeting, and several others after that, I never missed an opportunity to get advice from Audrey.

Here are some of the most important lessons I learned from her.

STRONG ORGANIZATIONS ARE BUILT ON LONG-TERM PLANNING

One of Audrey's greatest gifts was to assess our community's future needs,

create a strategy to meet them – and then be patient while the world caught up with her. When she was getting FSA licensed as a drug and alcohol treatment center in the 80s, there wasn't much funding available. She knew that would change as more people recognized the need for treatment. It did and she was ready.

That kind of forward-thinking and exceptional commitment to service continued throughout her career. In 2016, FSA was ahead of the curve again and recognized as an Opioid Use Disorder Center of Excellence by the State of Pennsylvania.

BE CLEAR ABOUT WHAT YOU NEED

I asked Audrey what she did first when she was offered the Executive Director position in 1987. She said matter-of-factly, "I told the board exactly what I would need in order to accept the position."

Audrey wanted some additional coaching, particularly when it came to communicating with her governance team. She knew what she wanted to accomplish and felt she could get there faster by working with an expert.

She told her board she needed additional

training in order to accept the position and she got it. Today, FSA has an enviably strong board and many dedicated committees – a testament to her strategic first steps.

DON'T FEAR CHANGE OR CHALLENGES

The first time Audrey and I met after I was named CEO, I told her why I was nervous. "It's going to be a challenge with a newborn and a toddler," I said.

She waved her hand at me and explained that she'd been in a similar position when she became ED. "But guess what? You're going to do it because that's what people like us do," she said firmly.

I nodded. "It's hard though. I have so much to learn."

She leaned in and said firmly, "And you'll learn."

Her support and friendship meant a lot to me. She was often stern and direct, but as a result, every compliment, every encouraging word, meant even more.

If I accomplish a fraction of what she did in my lifetime, I will be proud. 🍀



BCHG's mission is to assist homeless and low-income families in establishing and maintaining permanent affordable housing

626 Jacksonville Road, Suite 140, Warminster, PA 18974

215-394-8259

www.bchg.org



WWW.CLASSICTROPHIESINC.COM
ASI# 162809

CLASSIC TROPHIES INC.
Awards and Advertising Items
That Promote You

237 York Road
Warminster, PA 18974
215-674-5090
FAX 215-674-3862
sales@classictrophiesinc.com

Tuesday - Friday 8am to 4pm
Saturday 9am to 12 noon
Monday closed

“

*Audrey's presence
loomed large in Bucks
County. She was a
leader in every sense.*

”



United
Way



United Way
of Bucks County



Wegmans

38

Al Brown: Closing in On Hunger



Some people are just natural born closers. They are the ones who bring the big game, the important business deal—or even the great performance—to a satisfying conclusion for the rest of us. When it comes to providing hunger relief in Bucks County, our closer is Al Brown. For the past two years, he has pushed Bucks Knocks Out Hunger over the finish line—and personally provided more than 27,000 meals and nearly seven tons of fresh fruits and vegetables to people in need.

“

I feel like I have to do something for someone else. I really want to help people.

”

What can you tell us about yourself?

I was born in Philadelphia, but my family moved to the suburbs when I was young. I was the first in my family to go to college. I went to Temple. Because my family had very little money, I did odd jobs and commuted from home, but financially I still barely got by.

With some encouragement from a professor, I majored in chemistry. When I graduated I got a job at Rohm & Haas, where I was fortunate enough to contribute to a number of very successful research programs. As a reward for these efforts the company promoted me to Corporate Research Fellow, one of only three such promotions in the 100-year history of the company. I'm now retired.

Can you recall the first time in your life you gave your time or money to a nonprofit?

What do you remember about that experience?

The first time I gave to a nonprofit was to the United Way. I did that because I could give through payroll deduction at my workplace and the company would match my donation. One of the things I liked about giving that way was the fact that I could direct how the funds were to be used.

What motivates you to continue giving?

Although I did give during my working years, I had a family to support so I couldn't give that much. But when I retired, I began to reflect more on what life is all about. I feel so lucky – luckier than anybody I know by a factor of 10 – so I feel like I have to do something for someone else. I really want to

help people. When I can see people benefitting from it, I feel good.

At the office, we have dubbed you our Bucks Knocks Out Hunger "closer." You've made major gifts to push us over our Bucks Knocks Out Hunger fundraising goal for two years in a row. What appeals to you about being a closer?

To be honest, I'm a little competitive and I love the slam dunk! I like being able to bring the team across the finish line. I like knowing that I helped us get there.

What causes are important to you?

I feel strongly about education. I provide two chemistry scholarships for Temple students each year. As a chemist, I believe that it is possible to solve problems if we educate ourselves.

Hunger is a big issue and an area that I care about. In addition to supporting Bucks Knock Out Hunger, I provide food to the Bucks County homeless shelter for a month each year.

I also love the Wheelz2Work program, run by the Bucks County Opportunity Council. It really is a hand up, not a hand out.

What might some people be surprised to know about you?

I love biking. There are so many beautiful trails in Bucks County and Hunterdon County. Over the years, I've tracked how many miles I've ridden. I've done over 100,000 miles on a bike. 🚲



FINANCIAL SOLUTIONS
FOR YOUR LIFE



At Univest, we've dedicated ourselves to supporting the communities we serve for more than 140 years, holding true to the values and principles that helped shape us. It's why wherever you are in life or business, you can *bank here to get there.*

Banking | Insurance | Investments
Home Loans | Trust Services | Wealth Management



WEALTH ADVISORY
S E R V I C E S

STRENGTH AND INDEPENDENCE

MICHAEL SHEEHY, CFP®, AIF®
Financial Advisor

18 East Court Street, Suite 100 // Doylestown, PA 18901
215.340.3690
wealthadvisoryservices.com

Securities offered through Raymond James Financial Services, Inc., member FINRA / SIPC. Investment Advisory Services offered through Raymond James Financial Services Advisors, Inc. and Wealth Advisory Services. Wealth Advisory Services is not a registered broker/dealer, and is independent of Raymond James Financial Services. Certified Financial Planner Board of Standards Inc. owns the certification marks CFP®, CERTIFIED FINANCIAL PLANNER™, CFP® and AIF® in the U.S., which it awards to individuals who successfully complete CFP Board's initial and ongoing certification requirements.


COLLECTIVE IMPACT

How Our Donors Are Changing the World

Change is hard. With it, comes uncertainty. So in 2016, when United Way of Bucks County announced it was changing its funding cycle, there were concerns that donors might not support the new direction. Thankfully, the community's support has remained strong through this transition.

By pulling together to help our neighbors, we're building something bigger. Collectively, we're building a more united Bucks County. One that works better together to help those in need. In its first year, this more coordinated and collaborative way of funding solutions and working with partners has exceeded expectations.

Through their contributions, our donors are making sure people have a way to get to work. They are keeping the lights on and putting food on the table. They are making sure that kids have the care and support they need to lead healthy and vibrant lives. Our donors are moving families from being homeless and on the streets in to safe and affordable housing. They are making sure people have access to fresh produce and they are helping our elderly secure benefits and stay in their homes.

There's still a lot of work to be done, but through this transition, our donors have shown that they are people and companies who are deeply committed to changing lives and having a profound impact in Bucks County. 



COLLECTIVE IMPACT

Food Access

GOAL:

Increase access and availability of nutritious food

WHAT'S NEXT?

Expand Fresh Connect to include a third site.

Pack an additional 25,000 meals through BKO Hunger.

Support Hunger Nutrition Coalition of Bucks County to advocate on behalf of our food insecure neighbors.

Food is one of the most basic of human needs. Without adequate food, people are not able to think clearly, manage effectively, or plan for the future. Through our collective efforts, we're ensuring that people have the nourishment they need to function on a day-to-day basis, to support their families, and to work toward a better future.

BUCKS KNOCKS OUT HUNGER

This annual meal-packing event brings together over 600 volunteers to pack over 100,000 shelf-stable meals. It supports food pantries and senior centers throughout Bucks County. In combination with Operation Helping Hand, a one day food drive that engages both businesses and schools, UW Bucks has distributed more than 150,000 pounds of food in 2017.

FRESH CONNECT

This free mobile farm market established in 2017 ensures that people have access to fresh produce and other healthful foods. Because of these efforts, families are eating more fruits and vegetables, cooking more meals at home, and feeling healthier.





COLLECTIVE IMPACT**HUNGER NUTRITION
COALITION OF BUCKS
COUNTY**

As a member of the Hunger Nutrition Coalition of Bucks County, we use the tools of advocacy and education about food insecurity to change minds and policies, so that those who are food insecure are not marginalized or forgotten.

**Your United Way
is committed to
helping people
make better lives
by improving
food access and
conquering hunger
and food insecurity.**



May 25, 2017

To everyone involved with “Fresh Connect”

I never thought, at this stage of my life, that I would have the need to participate in a program such as Fresh Connect. At first, I was embarrassed to be asking for food but from the very first day at your site in Bristol, I was met with welcoming smiles and encouragement.

Like many seniors, my finances, even with the help from ‘SNAP’ just don’t allow for fresh, healthy food to last the month. (My \$3 increase in social security was followed by a \$2 reduction in food money.) As hard as I tried, I just couldn’t stretch my food budget to last the whole month.

As I received fresh fruit and veggies, I found myself turning to my old cookbook for recipes to try—my interest in cooking healthy meals for myself returned. I’ve tried new foods (the greens/salads) and I loved them. I’m eating healthier and am feeling better, both physically and mentally.

I thank everyone who has a part in this wonderful endeavor. You are not only feeding my body, you are feeding my spirit.

My most sincere gratitude to all involved.

God Bless You!

Eileen
Bensalem

“

*We're ensuring
that people have
the nourishment
they need.*

”



THE OUTREACH PROGRAM SALUTES
UNITED WAY OF BUCKS COUNTY
FOR ALL YOUR GREAT WORK.



The Outreach Program
Ending Hunger. Enriching Lives.

**BEST WISHES FOR ANOTHER
AWESOME BUCKS KNOCKS OUT
HUNGER EVENT!**

WWW.THEOUTREACHPROGRAM.ORG



Bucks County

Quality Child Care Coalition
for Early Care and Education

*Working to enhance the quality of
early childhood programs in Bucks County*

**QCCC is proud to partner with
United Way of Bucks County Success by 6
and PA Pre-K Counts Grantees**

To learn more: WWW.BUCKSQCCC.ORG



facebook.com/QCCCBucks



twitter.com/QCCCBucks



\$644,448

Value of food distributed
to the community in 2017

80

PERCENT

Of Fresh Connect
visitors surveyed
have tried new
ways of preparing
fruits and
vegetables

57,000

(more than 18,000 children)

Bucks County Resident struggle with
Food Insecurity

35,000 lbs.

Of Eggs distributed
through the BKO
Hunger initiative

56%

Of Fresh Connect
visitors surveyed
feel their physical
energy level has
improved.





James J. Dougherty Funeral Home, Inc.

*Pre Planning Specialists
Grief Support Groups*

*Our only location to
conveniently serve our community*

*Family owned and operated since 1972
with personalized service*

Miriam A. Dougherty, President John J. Bonner Jr., Supervisor
Robert J. Mahan, Funeral Director Jeffrey A. Stroup, Funeral Director
Rocco Doto III, Funeral Director Dana Aldworth, Funeral Director

2200 Trenton Rd., Levittown, PA 19056

(215) 943-7240

www.doughertyfuneralhome.com



Bay Sales

**The United Way & Non-Profit
Resource for School & Office
Supplies at Wholesale Pricing!**

**Get more
Supplies
for Less!**

For more information contact:

Alexis Roseman

Alexis@Baysales.com

215.331.6466

PFSA's Mandated Reporter Train-the-Trainer Program

Pennsylvania Family Support Alliance (PFSA) offers its "Recognizing and Reporting Child Abuse" curriculum to professionals (organizational trainers) through a Train-the-Trainer program (TTT).

Many schools, service agencies and other organizations across the state have benefited from this program, which helps build and expand in-house expertise and capabilities to offer Mandated Reporter Training.

Organizational trainers are **fully prepared to provide training** after attending a two-day comprehensive training that includes a trainer's guide, instruction, and practice sessions. These trainers then provide PFSA's training to colleagues within their organization.

PFSA offers **ongoing updates** regarding changes to the CPSL, technical Assistance, and trainer development teleconferences.

*You can find out more about the TTT program by calling PFSA at 800-448-4906. PFSA staff will give you all the info needed to get started in providing our expert training to your staff and volunteers.



pennsylvania
PRE-K COUNTS

Bucks County Pre-K Counts

provides high quality pre-school education for 3 & 4 year-olds through grants from the Commonwealth of Pennsylvania, with the commitment that our children can enter kindergarten **ready to learn and succeed in school and in life.**



Bucks County Pre-K Counts Grantees:
Pennsbury School District
United Way of Bucks County

**For more information, contact Michele at
mfina@lowerbucksymca.org or call 215-736-8077.**

COLLECTIVE IMPACT

Education and care for our youngest friends and neighbors is critical to the health and well-being of our communities. Investing in early care and education along with parenting support is one of the best ways to break the cycle of poverty and reduce incidents of neglect and abuse. UW Bucks is committed to the young people in Bucks County.

Education

GOAL:

Provide families with parent education, child care, and pre-k education so that kids are successful in school.

WHAT'S NEXT?

Pilot a program that combines parenting education with trauma counseling.

Increase access to child care and pre-k scholarships.

Expand #girlsSTEM to students in grades 4 - 6.

COLLECTIVE IMPACT

Pre-K Scholarships

Through a PA Pre-K Counts grant, the Educational Improvement Tax Credit (EITC), and community donations, UW Bucks provides pre-k scholarships to families in need. This financial assistance prepares pre-schoolers for kindergarten, and allows parents to keep or get a job so that they can provide for their families. In the last 3 years, UW Bucks has provided over 400 scholarships to families in Bucks County.

PRE-K COUNTS: PROVIDING A STRONG START IN SCHOOL AND IN LIFE

Our son has a developmental disability and various special needs. When he was 2 ½ years old, my son's therapists suggested we enroll him at Children's Developmental Program (CDP) in Quakertown. At that time, our son used a walker, wore leg braces, had epi pens, inhalers, and a multitude of other tools to address his many physical and developmental challenges. I was terrified to send him to school.

I was moved to tears then, as I am now, at the progress my son made within the first few weeks of attending school. He began to interact with his peers, follow a routine, and his speech improved rapidly. We could tell he was happy at CDP by how quickly he moved his walker to get to class.

My son is now 5 years old. He attends school all day, five days a week. This enables him to have instructional time, not just therapy, and helps him develop socially and academically.

His speech has sky rocketed—he can recite the alphabet, months of the year, and days of the week. He knows how to spell and write his name, colors and shapes, and so much more. We're also proud to say that he can now walk unassisted!

We've been fortunate to access a high quality pre-k education for our child—something we wouldn't be able to do without the Pre-K Counts program.

Our son is truly a success story and we're grateful for what Pre-K Counts has made possible for us.

Rachel & Robert K.



Parent Education & Support

For families in crisis, parenting education and support can be a lifeline. By helping families establish and maintain a safe and caring environment for their children, trained parent educators help families resolve issues and create family stability.

PARENTING EDUCATION: A MOTHER'S LIFELINE

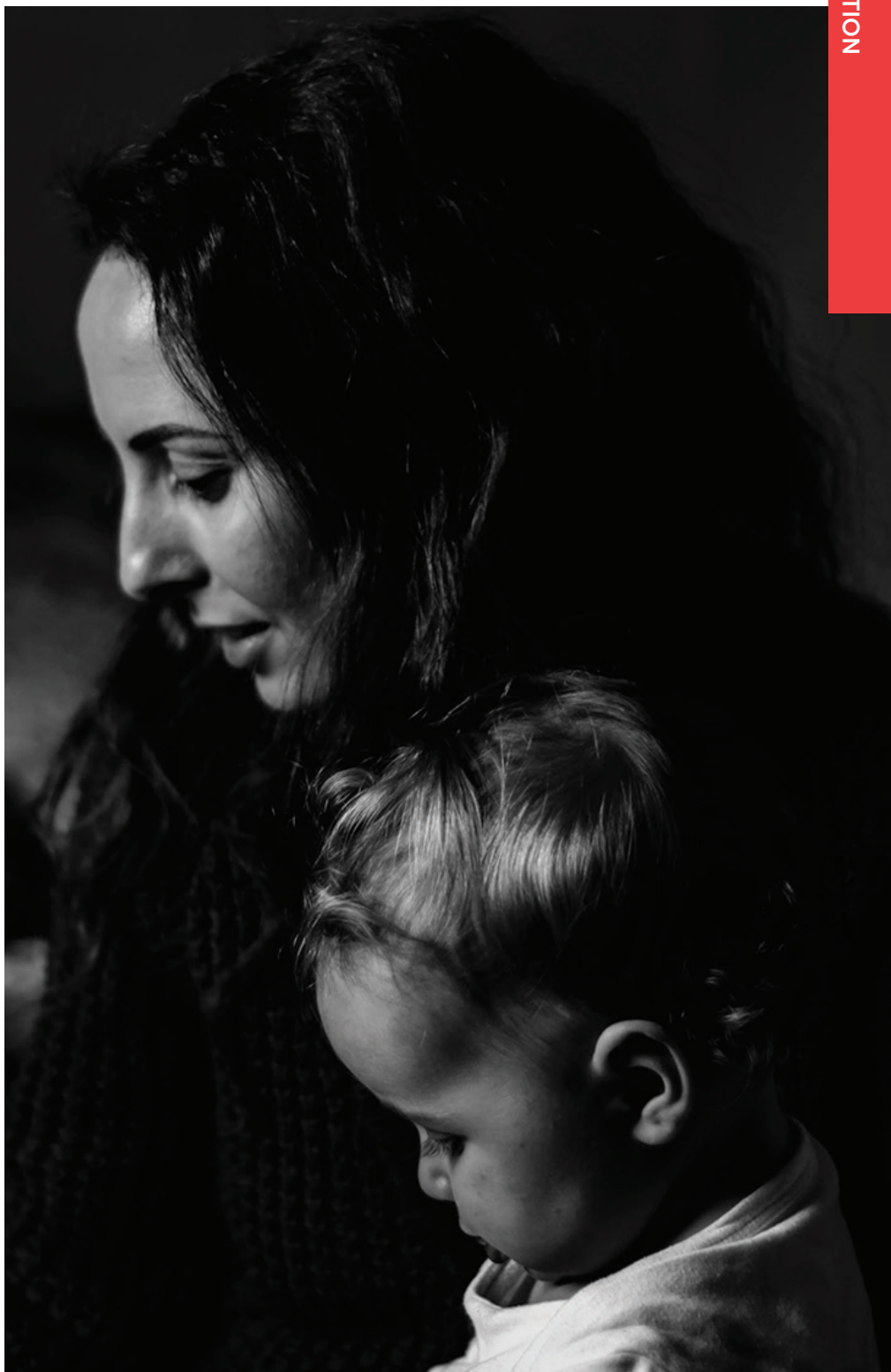
Nadia* was devastated. She was homeless and then lost custody of her son. As a temporary resident of the Bucks County Emergency Homeless Shelter, she was trying to get her life, and her son, back.

When Kelly, a Parent Educator with Family Service Association of Bucks County, first met her, Nadia was angry about her living and custody situations. She didn't seem interested in receiving the support and she tried to avoid Kelly. Undeterred, Kelly remained patient. She visited and talked with Nadia each week.

Eventually, the two built a solid relationship, and Nadia was able to move out of the shelter and into her own apartment. It wasn't easy for Nadia, but she worked hard, became a better mother, and regained custody of her son.

Kelly still visits Nadia. They practice parenting techniques and Nadia now sees the weekly home visits as a much-needed source of support.

“
Parenting techniques are a much-needed source of support for families in crisis.
”



*Name has been changed to protect the client's identity.

COLLECTIVE IMPACT

Connecting Kids & Families to Resources

United Way's Who to Call in Bucks County: A Community Resource Guide for Families with Young Children is a handy resource that puts contact of a host of resources right at your fingertips.

The Barnes & Noble - Oxford Valley annual book drive enables UW Bucks to provide thousands of books to families in need and ensures that literacy begins in the home.

\$1,017,000

value of pre-k scholarships made available to Bucks County families

185

Number of families served by UW Bucks funded parenting programs

800

of girls who attended #girlSTEM

2,868

number of backpacks distributed through Stuff the Bus

COLLECTIVE IMPACT

Stuff the Bus

Stuff the Bus is a community-wide school supply drive that provides nearly 3,000 backpacks full of supplies to school children in need. Stuff the Bus ensures that kids start the school year with the supplies and confidence they need to succeed.



COLLECTIVE IMPACT

#girlSTEM

This one-day conference encourages young women in grades 6-10 to pursue careers in Science, Technology, Engineering, and Math (STEM). Women working in STEM careers present hands-on lessons for the conference attendees, and give them a glimpse of what a STEM career really looks like.

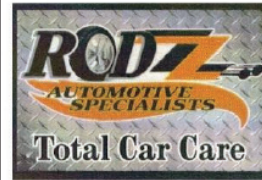






Mark J. Milnazik President

4015 Bethlehem Pike, Telford, PA 18969
 P 215.230.9221 F 215.933.6907
 mmilnazik@jmbconsultants.com
 www.jmbconsultants.com



PA State
 Inspection & Emissions
 Complete Car Care
 Custom Exhaust
 Diagnostics

Hours: Mon-Fri 8 - 6:00
 Sat 10:00 - 2:00
 4415 New Falls Rd.
 Levittown, PA 19056

Robert & Deborah Salm
 Owner
 215-269-9182
 rodzauto4415@outlook.com
 www.rodzautomotive.com

OPENING SPRING 2018

ALL NEW COASTER

OUR BIGGEST, MOST EXCITING
 FAMILY COASTER EVER.



TGSC
 TOM GALLAGHER SYSTEMS CONSULTING
THE COMPUTER DOCTOR
 Installation • Repair • Upgrades • Virus Removal
 Web Site Design and Hosting • Secure Wireless Setup
215-702-3558
 support@tomgallagher.com
 www.tomgallagher.com
 SENIOR & VETERAN DISCOUNTS

William Penn Center Preschool



Providing Good Beginnings since 1952

Full Day and Part Day Programs - Ages 2- Pre-K

Developmentally Appropriate Programs - Certified Teachers
 Licensed by the PA Dept. of Ed & Dept. of Human Services
 Keystone Stars 2 Center

9300 New Falls Road, Fallsington, PA 19054
 215 295-8154 / LBCC1952@comcast.net

Now Registering for

Summer and Fall 2018



Proud Partner with United Way for Hunger-Relief



Connecting local farmers with Neighbors in Need

Tina Davis State Representative - 141st District

4530 New Falls Road
 Levittown, PA 19056

267-580-2660

RepDavis@pahouse.net

*Thank you to the United Way
 of Bucks County for continuing
 to make our community stronger.*



COLLECTIVE IMPACT

Benefits/Financial Assistance for Seniors

GOAL:

Connect seniors to benefits and emergency assistance.

WHAT'S NEXT?

Assess the unique needs of seniors.

Coordinate efforts with other agencies.

Poverty affects people of all races and all ages. For many seniors, the cost of living, especially medical expenses, continues to rise while incomes remains fixed. In 2017, UW Bucks committed to providing assistance to our senior population. Through benefits navigation and emergency assistance seniors are staying healthier and living longer on their own.

SENIOR BENEFITS NAVIGATION

The Senior Benefits Navigation program connects seniors with a case worker skilled in understanding and navigating the public benefits system. This means seniors can get help with things like food and home heating costs.

EMERGENCY ASSISTANCE FUND

The Emergency Assistance Fund for seniors is designed to provide one-time financial assistance for seniors experiencing a financial crisis. It helps seniors meet a broad array of needs and can cover unexpected expenses not covered by other programs.

\$307,628

Dollar value of benefits obtained for seniors

122

Number of seniors who received emergency financial assistance



COLLECTIVE IMPACT

Emergency Needs & Financial Stability

GOAL:

Improve safety net programs and provide supports so that short-term hardships don't spiral out of control or result in homelessness.

WHAT'S NEXT?

Expand the shed operations.

Standardize how people access emergency assistance.

Further assess the transportation needs of county residents.



Volunteers from Cummins provide free oil changes as part of the transportation and emergency needs programs

When the financial math doesn't work, families are forced to make tough decisions. Often they're deciding between food and utilities; school supplies or clothing; medications or paying the rent in full. When people struggle to get by, every little bit helps. By providing emergency one-time assistance and additional supports, our collective efforts can help people bridge that gap and ensure that they don't fall further behind.

EMERGENCY NEEDS FUND

The Emergency Needs Fund is a collaborative effort that provides help when residents need it most. Funds are used to assist with utilities, car repairs, transportation costs, rent, and a host of other basic needs.

THE \$1,000,000 SHED

The Shed helps people turn a house (or an apartment) in to a home. It is the hub for in-kind gifts at UW Bucks and often supplies comforter sets, sheets, blankets, towels, household goods, and occasional small appliances. In 2017, the shed provided over \$1,000,000 worth of goods for our community.

HOLIDAY GIFT CARD DRIVE:

The Holiday Gift Card Drive provides gift cards for food and popular retail stores to families with older children. It ensures older kids aren't left out during the holiday season and helps families during a financially stressful time of the year.



Sorted gift cards before distribution.

997 Number of children who received gift cards through the Holiday Gift Card Drive

\$1,179,099

Value of household goods donated through gifts in-kind

6

of partners working with UW Bucks on transportation

8%

Percentage of Bucks County children living in poverty

\$350 Average amount of rental or utility assistance being offered per household

COLLECTIVE IMPACT

Housing and Homelessness

GOAL:

Reduce the number of people experiencing homelessness

WHAT'S NEXT?

Continue to improve on coordinated Street Outreach.

For years, the point-in-time count, the county's annual, one-day count of the homeless population, had remained stubbornly unchanged. That is until January of 2018 when the count dropped from 511 people in 2017 to 397 people.

The reduction was due, in large part, to changes in how the entire system operates. For one, many people were moved from a transitional housing model to a model called rapid rehousing in

which they are placed directly in to their own apartment with a lease in their name.

Another contributing factor was the more efficient, and coordinated, use of street outreach – the identification, verification, and assessment of people who are literally homeless. United Way's commitment to street outreach means that we are meeting people where they are, and connecting them to services more quickly.

22%

Reduction in the point-in-time count of homeless individuals from 2017 to 2018

229

Number of households assisted by Street Outreach

56

Number of households moved in to shelter or housing



LIVE UNITED: Connect with UW Bucks Staff

Marissa Christie

President & Chief Executive Officer

215.949.1660, ext. 113
267.795.7833
marissac@uwbucks.org

Faith Parkinson

Director of Finance & Administration

215.949.1660, ext. 117
faithp@uwbucks.org

Patricia Winslow Gallagher

Office Manager & Executive Assistant

Tim Philpot

Director of Community Impact & Pennsbury LYFT Project

215.949.1660, ext. 104
timp@uwbucks.org

Danielle Bush

Director of Community & Volunteer Engagement

215.949.1660, ext. 112
danielleb@uwbucks.org

Matt Uhler

Director of Resource Development & Impact Director for Financial Stability

215.949.1660, ext. 114
mattu@uwbucks.org

Candi Guerrero

Impact Director for Education

215.949.1660, ext. 108
candig@uwbucks.org

Katie Matarazzo

Resource Development Associate

215.949.1660, ext. 101
katiem@uwbucks.org

Shannon Hibbs

Database Manager

215.949.1660, ext. 103
shannonh@uwbucks.org

Sheri Ratner

Donor Relations & Events Manager

215.949.1660, ext. 114
sherir@uwbucks.org

Dan Warvolis

Finance Assistant (through 10/2017)

Andrea Walls

Development & Communication Manager (through 5/2017)

GRANT PROJECT STAFF

Pat Miiller

Project Manager – Success by 6
patm@uwbucks.org

Donna & Scott Rossi
Consultants

(267) 370-2724
info@EternalCelebrations.com

PO Box 2201
Warminster PA 18974


Commemorating holidays and special occasions at the final resting place for loved ones who will always be in our hearts.

- ♥ Holidays
- ♥ Special Occasions
- ♥ Maintenance

EternalCelebrations.com

Congratulations to the hundreds of volunteers that make a difference in Bucks County every day.

Thank You!



KATHARINE M. WATSON
CHAIRMAN, CHILDREN AND YOUTH
MEMBER, 144TH DISTRICT
HOUSE OF REPRESENTATIVES



EDUCATION INCOME HEALTH

LIVE UNITED

United Way



Good Friends, Inc.
Building bridges to recovery

*Community-Based Residential Treatment
Bridging Substance Abuse to Sustained Recovery*

*Member Agency and Proud Supporter of the
United Way of Bucks County*

(215) 736-2861 • Fax: (215) 736-1966
www.goodfriendsinc.org • E-mail: info@goodfriendsinc.org
PO Box 165 • 868 West Bridge Street • Morrisville, PA 19067
Facebook.com/GoodFriendsInc

United Way of Bucks County By the Numbers

100%

All of your contributions—
time, talent, and treasure—
stay here and directly benefit
programs in Bucks County.

and

Every program we fund is focused
on sustainable change.

\$3,889,751

Dollars that Bucks County families
have saved to date on prescription
drugs by using free FamilyWize
cards distributed by United Way.

\$116,810

Value of volunteer time
donated to Bucks County
through UW Bucks.



28 tons

Amount of food donated to local pantries through Operation Helping Hand in the past year.

800

Number of girls who attended the #girlSTEM conference. 97% of girls feel motivated to do well in school. 95% of them say #girlSTEM helped them plan ahead, make career choices, and feel optimistic about their future.

\$100,380

Value of school supplies distributed to kids in need through Stuff the Bus.



Statement of Operations

United Way of Bucks County Statement of Operations (Pre-audit) For the Year Ended 12/31/17

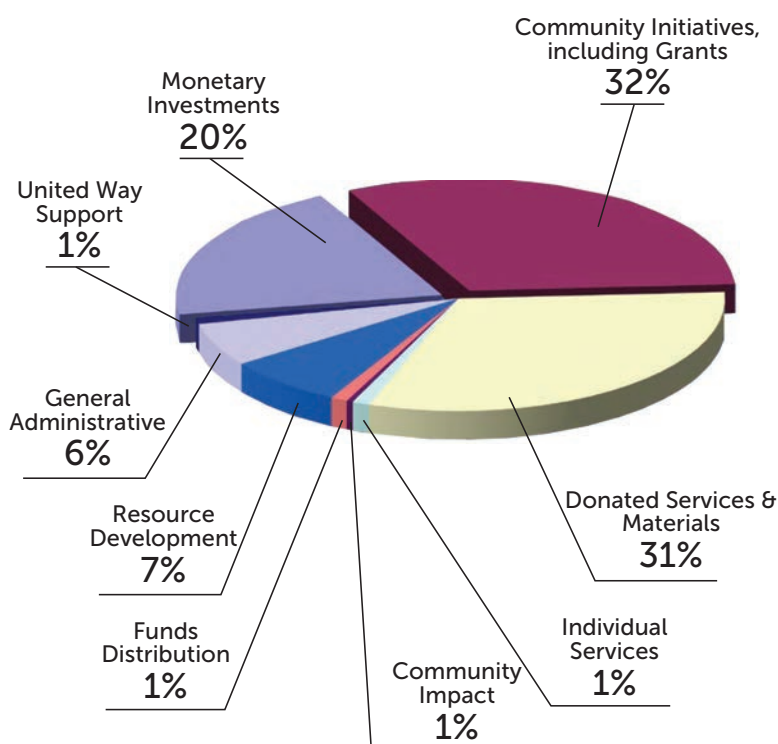
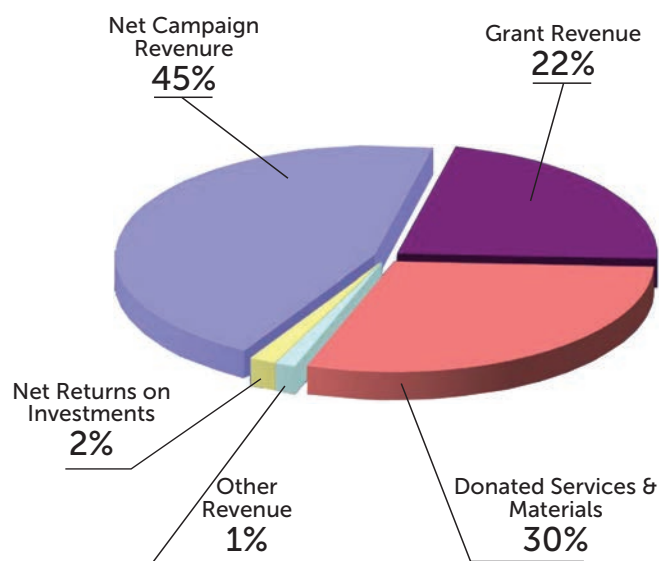
PUBLIC SUPPORT AND REVENUE

Net Campaign Revenue	
Gross Campaign	2,046,418
Less: Donor Directed Gifts	(101,698)
Less: Provision for Uncollectibles	(145,058)
Net Campaign Revenue	1,799,662
Grant Revenue	881,250
Donated Services & Materials	1,179,100
Other Revenue	49,961
Net Returns on Investments	65,489
Public Support and Revenue	<u>3,975,462</u>

EXPENDITURES

Community Impact Expenses	
Distributions to Bucks County	866,550
Less: Donor Directed Gifts	(101,698)
Monetary Investments	<u>764,852</u>
Community Initiatives incl. Grants	1,188,503
Donated Services & Materials	1,180,090
Individual Services	39,916
Community Impact	14,036
Funds Distribution	38,723
Full Investment in Bucks County	<u>3,226,120</u>
Resource Development	272,336
General & Administrative	234,347
United Way Support	<u>32,891</u>
Expenditures	<u>3,765,694</u>

Net Surplus 209,768



United Way of Bucks County Funded Programs 2017

Through a new collaborative and community-based endeavor, United Way of Bucks County invested in programs that are devoted to creating sustainable change in our community.

Throughout 2016, United Way worked with more than 75 different service providers, community members, and representatives from county government to determine community investments to be made in 2017.

Through those efforts, Community Solutions Teams were formed in five key areas: Early Child Care and Education; Access to Benefits and Assistance for Senior Citizens; Information and Referral Services; Help with Emergency Needs; and Hunger and Food Insecurity. A sixth area focusing on Housing and Homelessness 2017.

The programs listed here represent some of the people and organizations who bring the passion, expertise, and resources needed to get things done. Together, we address the key issues that destabilize our community. We are extremely proud of the work being done which wouldn't be possible without our generous donors and volunteers.

Early Child Care and Education

Family Service Association

Parents as Teachers

Nurturing Parenting

Child Home and Community in Partnership with YWCA of Bucks County

Building the Family

Access to Benefits and Assistance for Senior Citizens

Family Service Association

Benefits navigation for seniors

Information and Referral Services

Family Service Association

First Call for Help Line improvements

Help with Emergency Needs

Bucks County Opportunity Council

Emergency Services Program

Advocates for Homeless and Those in Need, Bucks County Opportunity

Council, Family Service Association of Bucks County, Lily's Hope

Foundation, Network of Victim Assistance, A Woman's Place

Utility and transportation assistance to low- and moderate-income residents

Hunger and Food Insecurity

Bucks County Opportunity Council, Philabundance, Rolling Harvest Food

Rescue, St. Mary Medical Center Families Living Well Program

Mobile, neighborhood food distribution program

Housing and Homelessness

Bucks County Opportunity Council

Street Outreach



THANK YOU

To Our Leadership Donors

United Way of Bucks County Leadership Circles recognize and celebrate the vital importance of personal giving at exceptional levels. Members of our Leadership Circle are people of vision. Their community involvement creates solutions that shape tomorrow.

The Leadership Circle is comprised of local leaders and community philanthropists whose gifts of \$1,000 or more, invested in United Way of Bucks County, impact the quality of life in our community.

Many leadership donors also volunteer and provide guidance throughout the year, help with United Way's affinity groups, and are tremendous influencers at workplace campaigns.

We are deeply grateful for their support, generosity, and the tremendous impact they make in our community.

*List based on donation records available at time of printing. Gift amounts include corporate matches when appropriate and represent most recent gifts from the 2016/2017 campaign years. We have made every effort to ensure the accuracy of this document. If an error or omission has occurred, please contact Matt Uhler at mattu@uwbucks.org.

Alexis de Tocqueville Society (\$10,000 and above)

Marissa Christie and Carl Saalbach
Mr. and Mrs. Alex Gorsky
Neil and Renee Hall
Mr. and Mrs. Heiner Markhoff
Mr. Stuart McGuigan
Ann C. Olson
Christopher Picariello
Dr. Paulus Stoffels
3 Anonymous Donors

William Penn Society (\$5,000 to \$9,999)

Elizabeth Bibic
Mr. Albert Brown
Margaret Dubell
Ms. Karen Keefe
S. Melissa Maret
John & Carol McCaughan
Catherine C. McElroy
Mr. Murray McKinnon
Paul Mullen
Mr. James F. Samaha
Mr. Thomas Stanley
Ms. Rebecca Tillet
Jeane Vidoni

Vanguard Level (\$2,500 to \$4,999)

Todd A. & Teresa C. Alderfer
James Baldassarre
Charles A. Bancroft
Harold R. Beck
Douglas Beck
Allison Campbell
Richard and Anne Coe
Mark C. Connelly
Michael & Robin Connor
Anthony V. Cuomo
Dwight Davis
Michael Joseph Del Prado
Jennifer Dredge
Ron Dungan
Janice McCracken Erkes
Qiuwei Feng
Daniel Figus
Jay and Kelly Fischbein
Margaret Forrestel
Stephen French
John Griffin
Carolynne A. Hannan

Anasuya Hazra
Michael Hepburn
Brian R. Jeter
Roy Kerney
Timothy and Pat Kiorpes
Robert G. Kokstein
Paul D Kuhn
William P Larkin
Werner Liebig
Michelle Lynch
Stuart J Magloff
Barbara Marzano
E. Harry McGuirk
Christine McKee
Dennis L. Myers
Dolores Needleman
Maria Perez
Geetika Ravela
Manohar Ravela
Robert Reynolds
Mr. and Mrs. Harry Rose
Robert Rousseau
John Ruebush
Blair Rush
Arash Shahideh
Donald Shaw
Jeffrey A. Siebold
Paul Templeton
Timothy J. Tenhoeve
David Thomas
Andrew Tosti
Michael J. Trzaska
Kathleen Widmer
John Wilson
Governor Tom Wolf
Mark and Mimi Worthington
3 Anonymous Givers

Silver Level (\$1,500 to \$2,499)

Mr. Eduardo Baez-Toro
Steven Bariathtar
Mr. Gaston Barua
Ms. Michele Bell
Mr. Richard Joseph Bertz
Steven D. Boyd
Mr. Michael Boyle
Andrew Brackbill
Ms. Mary Agnes Brodowski
Peter C. Brown
James E. Buschmeier
Mr. and Mrs. Robert Caruso

Kevin Cassidy
Robert S. Coffin
Carl Coker
Michael Comprelli
Mr. Brian Davies
Ellen Diorio
Kimberly DiPierro
Ms. Donna Emhart
Maxine Epstein
Roger T Falloon
Gerald A. Feister
David & Arden Freeman
Ms. Michelle Fromholzer
Mr. Paul Furlong
Mr. and Mrs. Steve Gallucci
David J. & Nancy Gondak
Mr. David Goodrick
Michael Grissinger
Ken & Lois Heitz
Roberta Herald
Mr. Mike Jameson
Dorothy Jaworski
Mrs. Karen Johnson-Susko
Dennis and Ann Jones
Mr. Michael Kellar
Mr. Fred Lamb
Ms. Marie Lazam-Bassler
Ms. Susan Lonergan
Ms. Laura Lufrano
Ms. Roseanne M. Marinaro
Mr. Jay Markwalder
Mr. and Ms. Philip McAloon
Ms. Pat Müller
Tomas Morales
Mr. Michael Moscherosch
Mr. Jason Nadler
Ms. Angela Nwaneri
Mr. Thomas J. Ohntrup
Ms. Faith Parkinson
Mr. Timothy Philpot
Mr. Douglas G. Placek
Mrs. and Mr. Claire Quinn
Joanne H. Raphael
Ms. Sheri Ratner
Monika Rector
Mr. Donald Rhule
Patrick Riccardino
Mr. Robert Roda
Mr. Richard Rooney
Mr. Bryan Sandmann
Mr. Curtis Sawyer
Mr. Frederick Scea

Bill and Sarah Shoffler
Traci Smith
Mr. Rick A. Snyder
Susan F. Starr
Joan Thalheimer
Mr. Matt Uhler
Gary Vorsanger
Mr. Michael Wolfe
Ms. Elizabeth Young
7 Anonymous Givers

Bronze Level
(\$1,000 to \$1,499)

Mrs. Ariel Abreu-Pena
Ms. Carol Allen
Mr. Jack Allison IV
Dave Anderson
Mr. David L. Anderson
Ms. Lola Araba
Mr. Frederic Arbogast
Mr. Jeffrey Baab
Mr. Alexander Balagour
Stephen A. Biddle
George Bilyk
Mr. Keith Blizard
Gary L. Bowman
Ms. Karen Boyd
Mr. Kevin Bradley
David R. Breidinger
Ms. Sarah G. Brennan
Mr. Steve Bright
Mr. Joseph K. Brocker
Ms. Tameka Bryant
Charles Buben
Mr. Craig A. Bunce
Ms. Valerie Cain
Ms. Laura Cakolli
Mr. Harold M. Card
Donna B. Cochran
Mr. and Mrs. Norman Cohn
John Collier
Ms. Bridget C. Connell
Mr. Kevin Cornwall
Renata Cortes
Patrick & Carol Counihan
Ms. Celio L. Dacosta
Mr. Russell Darling
Mr. Danny Dayoub
Mr. Thomas Denno
Mr. Albert John DePalantino, C.P.A.
Ms. Rosario DiMario
Mr. David E. Elkins
Mr. Walter Epp
Mr. James B. Erb
Mr. Chris Everett
Mr. Ralph E. Exton
Mr. Robert Fahey
Mr. Michael Farabaugh
Ms. Elise Felicione
Harry Flanagan III
Edward Flanagan
Ms. Glenn Flego

Ms. Janice Fongemie
Mr. James Frain
Mr. and Ms. C. Theodore Fritsch Jr.
Mr. John Gabkee
Frank Gehringer
Ms. Carol Gerson
Shawn Gibson
Mr. Marc Gidwani
Mr. Vincent Giglio
Mr. David Glenwright
William J. Gretzula
Mr. Joseph P. Halpin
John Harding
Carole Harper
John F. Harrison
Ms. Ethlyn Haseth-Wolstenholm
Ms. Kim Hasili
Ms. Daphne Hayes
Mr. Christopher Herbine
Rachel Holler
John P. Holroyd
Robert A. Houck
Ms. Debra Israel
Mr. Stanley Jaroszewski
Ms. Amy Jumbelic
Mr. David Juza
Daniel P. Kelly
Mr. David Kinsley
Ms. Karen Kirchner
Michael Kitchko
Mr. Mark Klaiber
Mr. Jonathan Klass
Mr. Bruce Knipe
Mr. John Kochavatr
Ms. Jacqueline Kruty
Douglas Lejambre
Ms. Kimberley A. Lentz
Ms. Gail P. Linenberg
Mary Love
Ms. Mary Jane Maley
Mr. Vince J. Mandes
Mr. Stephen McCarthy
Mr. Patrick G. McCormick
Michael A. Mee
Curt B. Metzbower
Mr. Keith R. Michael
Mr. Stephen Minacci
Mr. Robert J. Monk
J. C. Moore
Ms. Jessica Moore
Ms. Karin Moore
Martin Moran
Ms. Cheryl Moyer
Mrs. Jennifer S. Murphy
Kerry Murphy
Mr. Edward R. Nawrocki
Mr. James M. Nemecek
Mr. Dennis Nolan
Larry and Marilyn Nolt
Ms. Sue Okun
Mr. John Oneil
Mr. Michael Osterman

Mr. Jeffrey Palmer
Kimberly Park
David G. Payne
Ms. JoAnn Perotti
Ian Preddy
Mr. Kamal Ramani
Mr. Michael Renzo
Mr. Ralph Riley
Mr. Anthony S. Romano
Ms. Nancy S. Rush
John Schautz
Jennifer Schlosberg
Ms. Stephanie Schwartzberg
Chris S. Scott
Jaclyn Sekula
Ms. Tamara Sellers
Mr. Timothy M. Senavitis
Mr. Adam Siver
Ms. Natalie Solov
Mr. Kirk Sorgi
Joe Spadafore
Paul and Cheryl Stabile
Mr. and Mrs. Scott D. Stover
Ms. Sherri E. Strickler
Mr. Laurence Stuardi
Matthew T. Sullivan
Francis and Rosemary Sullivan
Mr. John Tate
Mr. Alexander B. Thorne
Mrs. Audrey Tucker and Mr. Tom Tucker
Edward Urankar
Mr. Geo Varkey
Mr. Jose A. Villanueva
Mr. Derek P. B. Warden
Mr. Brian Wheeler
Mr. and Mrs. Richard K. Wizeman
Mr. Michael O. Wood
Mr. Chris A. Wright
Mr. Edward Wurster
Mr. Ahmed Zahir
Mr. Gaspar Zuniga
7 Anonymous Givers

Emerging Leadership Donors

Jean Armstrong
Neal Babcock
Connie L. Barna
Mr. Bradley Becker
Jason Boor
Marlene Bower
Joseph Brogan
Danielle Bush
Nelson Colon
Heide Cuning
Gregory Dennis
Kevin Devaney
Catherine DiGeorge
Theodore D Dorand
Thomas J. Eagan
Joseph Fabrizio
Dwight F Fairchild

Gary L. Fox
Charles Funk
Kevin Gallagher
Antoinette Gellentien
Glenn Girardi
Angela Glanton
Carin Griffiths
Janine Grosso
Michael R. Guldin
Nahor Haddish-Berhane
Richard P. Harman
Haans Homer
Robert Immerman
Kimberlin Keller
Peter Kelley
James Kelly
Bridget Kimmel
John Lamelza
William P. Liptrot
Brian Maloney
Steven Maragakes
Michael Marquis
Doreen Masalta
Linda McKown
Christine Miller
Paul W. Minnichbach
Robert J. Mirales
Scott D. Mittl
Andrew J. Morey
Steven Northrup
The Novello Family
Thomas R. O'Kane
Pamela Palmer
Ms. Kathleen G. Peppelman
Matt Piserchio
Stanley Plotkin
Jose Roman
Patricia Ruddick
Daniel Schweitzer
Patrick Scott
Brian Shlemon
Robert F. Smith
Steven R. Sterling
Jessica X Su
Craig Sutton
Sybil Swanson
Robert Trikur
Luis Valcarcel
C. Anthony Verbeck
Douglas A. Wharton
Paul Woods
James Zaccagnino
Edward Zarzatan
1 anonymous Giver

THANK YOU

To Our Partner Companies

100 Acre Wood Foundation Trust
3M Retirees
A Woman's Place
Abbott Laboratories
Abbvie
Accenture
ACME Markets
Advanced Advisory Services
Advertising Specialty Institute
Aetna US Health Care
Agilent Technologies
Air-Liquide
Aldie Counseling Center
Allstate Insurance Company
AmazonSmile Foundation
American Red Cross, SE PA Chapter
Ametek, Inc.
Amica Companies Foundation
Andersen Corporation
Ann's Choice
Antheil, Maslow & Macminn, LLP
Anthony & Sylvan Pools
Aon Affinity Insurance
Aramark
Arkema
ARRIS
Associated Production Services
AT&T
Avery Dennison Corp (Fasson)
Bank of America
BARC Developmental Services
Barnes & Noble
BASF
Bay Sales
BB&T
BD Group
Bee, Bergvall & Co
Begley Carlin & Mandio, LLP
Benefits Data Trust
Bensalem Senior Citizens Association
Bensalem Township School District
Best Buy
Big Brothers Big Sisters of Bucks County
Boeing Employees

Bon-Ton
Boscov's Department Store
Boy Scouts of America, Washington Crossing Council
Bristol Borough School District
Bristol Township School District
Bristol-Myers Squibb
Brooks Instrument
Buckingham Valley Vineyards
Bucks Child Care
Bucks County Community College
Bucks County Community College Alumni Association
Bucks County Drug & Alcohol Commission
Bucks County Housing Authority
Bucks County Housing Group
Bucks County Intermediate Unit #22
Bucks County Opportunity Council
Bucks County Quality Child Care Coalition
Bucks County Technical High School
Bucks County Workforce Development Board
Bucks Women's Initiative
C & S Wholesale Grocers
Carisma
Carroll Engineering Corporation
Centennial School District
Central Bucks Family YMCA
Central Bucks School District
Century Link Clarke M. Williams Foundation
Ceridian
Child Care Information Services of Bucks County
Children of America
Children's Developmental Program
Childtowne, Inc.
Chipotle Mexican Grill
CIGNA
CITIGROUP
Citizens Bank
Classic Trophies, Inc.

Click & Give
CNG - UW Worldwide
Cobham
Collective Brands (Payless Shoe Source)
Combined Federal Campaign
Comcast Cable
CommScope, Inc.
Community Health Charities New Jersey
Corporate Visions, Inc.
Costco
Council of SE PA
Council Rock School District
County of Bucks
Covenant Bank
Credit Counseling Center
Crum & Forster Insurance
Cummins Power Systems, Inc.
Customers Bank
Delaware Valley University
Deluxe Corporation Foundation
Detective Christopher Jones Foundation, Inc.
Dominion
Dow
Doylestown Democrats
Draeger Medical, Inc.
Dunmore Corp
Durham Deli, Inc.
Earle M. Jorgensen Company
Eat'n Park Hospitality Group
EDI Solutions
Educational Testing Service
Enterprise Rent-A-Car
Equifax
Ernest & Young
Eternal Celebrations
Express Scripts
Exxon Mobil Research & Engineering
Family Service Association
Federal Express Corporation
First Bank
First Energy
First Friends, Inc.
First National Bank & Trust of Newtown

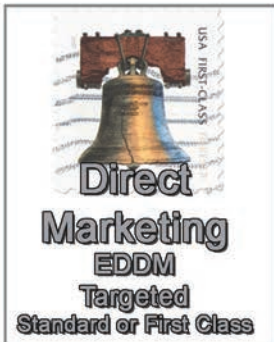
First Niagara Bank
Fulton Bank
Furia Rubel
GateHouse Media, Bucks County Courier Times & The Intelligencer
Gayman Elementary School
Geiger
Geisinger Health System
Giant Food Stores
Girl Scouts of Eastern Pennsylvania
GM Service Parts Operation
Good Friends, Inc.
Grace Episcopal Church
Grainger
Grand View Hospital
Greater Philadelphia Economy League
Guardian
Habitat for Humanity of Bucks County
Hanover Insurance
Harold Beck & Sons, Inc.
Harris Comfort
Harrisburg University of Science and Technology
Harte Hanks
Health Link
Health Strategies Group, Inc.
Hershey Food Company
Hertz
Hill Wallack, LLP
Honeywell Hometown Solutions
Huntingdon Valley Bank
Hyman Korman Family Foundation
IBM Corporation
Incyte Corporation
Independence Blue Cross
Ing Employee Giving Campaign
Innophos
Insaco Incorporated
Inspire Federal Credit Union
Inverse Paradox
Iron Will Strength & Fitness
ITW
IWCO Direct

J.C. Penney Company, Inc.	N. A. Falcone & Associates, Inc.	Price Waterhouse Coopers	T-Mobile USA, Inc.
James J. Dougherty Funeral Home	NASC	Principal Financial Group	Tom Gallagher Systems
Janssen Pharmaceuticals, Inc.	Nationwide Insurance Enterprise	Prudential Insurance Co.	Consulting (TGSC)
JBT Corporation	Neshaminy Pre-K Counts	PSE&G	Travelers
JMB Consultants, Inc.	Neshaminy School District	Publicis Touchpoint Solutions	U. S. Bank
John Kennedy Ford	Network for Good	QNB	UGI Utilities
Johnson & Johnson, Inc.	Network Of Victim Assistance	Quaker Chemical Corporation	United Health Group
JP Morgan Chase & Co	New Britain Baptist Church Food	Quakertown Community School	United Parcel Service
JPM Partners, LLC	Pantry	District	United States Steel
Kampi Components Co., Inc.	New Hope-Solebury School	Ray Murray, Inc.	Univest Corporation of PA
Kellogg Company	District	Reynolds American Foundation	Upper Bucks Technical School
KMRD Partners, Inc.	New Jersey State Employees	RICOH USA, Inc.	Upper Bucks YMCA
Knights of Columbus #4215	Charitable Campaign	Rite Aid	USA All Pro Auto Salon
Council	Nordson	Rolling Harvest Food Rescue	Valley Youth House
Krevitz & Associates Attorneys at	Nordstrom	Rotary Club of Doylestown	Vanguard Group
Law	Northampton Township	Salem United Church of Christ	Verizon Foundation
Laboratory Corp. of America	Novartis	Santander Bank	Village Improvement Association
Langan Engineering &	Order of Eastern Star, Inc.	SECA	Vita Education Services
Environmental	Neshaminy Chapter #374	Sesame Place	VOAD
Legal Aid of Southeastern PA	Outreach, Inc.	Sherman Engineering	VWR Charitable Foundation
Libertae	Palisades School District	Siemens Medical Solutions	Walgreens
LifeQuest	Parx Casino	Silicon Valley Community	Wal-Mart
Lifespan Adult Day Health Center	Pass Line Casino Parties	Foundation	Wal-Mart Foundation
Lincoln Financial Group	PDQ Printing & Graphics	Solvay	Warminster Fiberglass Co.
Lincoln Investment	PECO	Southeast Regional Key at PHMC	Waste Management of PA
Linked Healthcare Corporation	Penn Color, Inc	Spectra Energy Corp	WAWA
Livengrin Foundation, Inc.	Penn Community Bank	Sprint Nextel	Wealth Advisory Service
Lockheed Martin	Penn Environmental &	St. Luke's Quakertown Hospital	Wegmans Food Markets, Inc.
Lower Bucks Community Centers	Remediation	St. Mary Medical Center	Wells Fargo
Lower Bucks Family YMCA	PennEast Pipeline Company, LLC	St. Philips Episcopal Church	WestRock Packaging, Inc.
Lowe's	Pennridge School District	State Farm Insurance	William Penn Center Preschool
M & C Specialties Co	Pennsbury School District	STD Associates, L.P.	Williams
Macy's	Pennsylvania American Water	Suez Water Technologies &	Woods Services
Margaritas	Pennsylvania Family Support	Solutions	Xcel
Markarios Consulting	Alliance	SunGard Data Systems, Inc	Xerox Corporation
Markarios Consulting	Pfizer International	Susquehanna Bancshares, Inc	YWCA of Bucks County
Maternity Care Coalition	Philabundance	Synchrony Financial	Zurich North America
McCafferty Auto Group	PICPA Foundation for Education	Tara Tape	
Merck & Company, Inc.	& Research	Target Stores	
Merle Norman Cosmetics	Pitney Bowes	TD Bank	
Microsoft	PKF Mark III, Inc.	The Christmas Gala	
Middle Bucks Institute of	PNC Bank	The Closeout Group	
Technology	PNC Financial Services Group,	The Dump	
MinglMarketing	Inc.	The Gormley Furlong Group at	
Mom's Club of Southeastern	PNL C&E Foundation	Stifel	
Lower Bucks County	Ponderosa Pines Campground	The Grundy Foundation	
Morgan Stanley	PPL Corporation	The King Agency	
Morison Cogen, LLP	Pratt & Whitney	TIAA-CREF	
Morrisville School District			

Design to Your Specs

Business Cards
Letterheads
Envelopes
Postcards
Brochures
(Bi-Fold/Tri-Fold)
Flyers
Labels
Magnets
and much more....
Call Today
215-458-8767

THE BUSINESS COMPANY



Engineering Drawing
Mechanical Drawing

- Business Cards
- Envelopes
- Letterheads
- Flyers
- Brochures
- Postcards
- Menus
- Booklets
- Labels

- Multipart NCR Forms
- Invoices
- Estimates
- Purchase Orders
- Statements
- Work Order Forms
- Holiday Greetings
- Wedding Programs
- Thank you cards

- Bookmarks
- Table Tents
- Door Hangers
- Posters
- Banners
- Yard Signs
- Magnets

Call Today



PDQ

Printing & Graphics

is conveniently located in Historic Bristol Borough
308 Basin Park, Bristol PA 19007
Tel: (215) 458-8767
Fax (267) 878-0429
www.pdqprinting.net



Delivering today
for a brighter
tomorrow

Whether the hottest summer day or an icy winter morning, PPL people know that our customers rely on us. That's why we have a personal commitment to providing essential energy services in extraordinary ways.

PPLWEB.COM



Spirit of Bucks Organizations

Each company or organization that contributes over \$10,000 per year to United Way of Bucks County earns the distinction of Spirit of Bucks. Contributions can come through any combination of employee giving, corporate gifts or matches, or sponsorships.

Through their generosity, they become the foundation of positive change.

Over \$100,000

Johnson & Johnson, Inc.
SUEZ Water Technologies & Solutions

\$50,000 to \$99,000

Dow Chemical
Giant Food Stores
Penn Community Bank

\$25,000 to \$49,999

Bristol-Myers Squibb
Comcast Cable
ITW
Nationwide Insurance
Enterprise
PECO
QNB

TD Bank

United Parcel Service
Waste Management of PA
Wegmans Food Markets, Inc.

\$15,000 to \$24,999

BB&T
Enterprise Rent-A-Car
Harold Beck & Sons, Inc.
Neshaminy School District
Sesame Place
Target
United Way of Bucks County

\$10,000 to \$14,999

ACME Markets
Advertising Specialty Institute
Aon Affinity Insurance
Arkema
Avery Dennison Corp. (Fasson)
Bucks County Community College
Covenant Bank
Cummins Power Systems, Inc.
Customers Bank
IBM Corporation
Insaco Incorporated
Macy's
Merck & Company, Inc.
Wells Fargo

Thank You to Our Annual Breakfast & Bucks United Magazine Sponsors

DIAMOND

SUEZ Water Technologies & Solutions

PLATINUM

BB&T Bank
Beneficial Bank
Comcast
First Bank of New Jersey

GOLD

Bucks County Courier Times
Family Service Association
Hill Wallack, LLP
Morison Cogen
Parx Casino
PECO
Penn Community Bank
Wegmans

SILVER

Bucks County Opportunity Council
Carisma Computer Services
Customer's Bank
Enterprise Rent-A-Car
First National Bank & Trust of Newtown
PDQ Printing
PPL Electric Utilities
The Gormley Furlong Group at Stifel
Univest
Wealth Advisory Services

BRONZE

Bay Sales
Begley, Carlin & Mandio
Dougherty Funeral Home
JMB Consultants, Inc.
Pennsylvania Family Support Alliance
Pre-K Counts
Quality Childcare Coalition
Rolling Harvest Food Rescue
Sesame Place
The Outreach Program

BOOSTER

Bee, Bergvall & Co.
Bucks County Housing Group
Classic Trophies, Inc.
Eternal Celebrations
Good Friends, Inc.
Inspire Federal Credit Union
Rodz Automotive Specialists
State Representative Tina Davis
State Representative Katharine Watson
Tom Gallagher Systems Consulting
William Penn Center

Community Award Winners



Community Award Winners

Each year, United Way of Bucks County's Board of Directors and staff acknowledge some of the highest achievers in our community; the people and organizations who bring the passion, resources, and expertise to make great things happen.

All of our award winners show what it means to Live United. We are deeply grateful for their contributions.

IMPACT AWARDS

Impact Awards celebrate the ways in which people come together for the greater good.

UNITED FOR EDUCATION

This award recognizes individuals or groups who have made a significant contribution to advancing high quality educational opportunities by sharing their time, their expertise, or their financial resources.

This year's winner is:

Dr. Christine McKee. In addition to her role as a Pre-K Counts program coordinator, Dr. McKee works passionately to promote collaboration among early childhood and elementary educators. She has applied her knowledge and experience as a teacher and school principal to advocate for high quality pre-k education at the local and state level. Her commitment to helping children and families shows in the many activities and projects in which she is involved. Her support of BKO Hunger and Stuff the Bus is invaluable.

UNITED FOR FINANCIAL STABILITY

This award recognizes individuals or groups who have made a significant contribution to improving the financial stability of Bucks County residents by sharing their time, their expertise, or their financial resources.

This year's winner is:

Tom Sofield, a local news junkie through and through, operates LevittownNow.com and NewtownPANow.com. Tom has generously volunteered his time, and on more than one occasion, has provided critical media support that has helped UW Bucks reach fundraising goals for financial stability initiatives like Stuff the Bus and the Holiday Gift Card Drive.

UNITED FOR HEALTH & WELLNESS

This award recognizes individuals or groups who have made a significant contribution to improving the health or wellness of Bucks County residents by sharing their time, their expertise, or their financial resources.

This year's winner is:

Amy Gianficaro, for her commitment to the well-being of Bucks County residents and for her assistance in establishing and steadfast support of Bucks Knocks Out Hunger.

UNITED FOR IMPACT

This award honors individuals or groups who help build a stronger community by contributing to more than one of the interdependent areas of education, health and wellness, and financial stability. Typically, winners in this category work in concert and with many partners, sharing their time, their expertise, or their financial resources.

This year's winner is:

Cummins Power Systems, Inc. for its support of UW Bucks and the residents of Bucks County. Not only is Cummins deeply involved in signature events including Stuff the Bus and Bucks Knocks Out Hunger, they are also committed to their annual campaign. 91% of the team members at their Bristol location participate in volunteer opportunities throughout the year. Through their direct and indirect support, Cummins makes a huge difference in Bucks County.

CAMPAIGN AWARDS

100% AGENCY PARTICIPATION

This award acknowledges nonprofit agencies that achieve 100% participation in their annual United Way campaign.

- Bucks County Opportunity Council
- Credit Counseling Center
- Good Friends, Inc.
- United Way of Bucks County
- YWCA of Bucks County

MOST OUTSTANDING CAMPAIGN

(multi-location)

This award acknowledges campaigns with multiple sites that make a substantial impact in both dollars and engagement.

Giant Food Stores is being honored for having the most Outstanding Campaign (multi-location).

REGIONAL CAMPAIGN EXCELLENCE

This award honors the campaign, run outside of Bucks County, that makes the greatest impact in our community.

Johnson & Johnson wins the award for Regional Campaign Excellence.

CAMPAIGN VOLUNTEERS OF THE YEAR

The Campaign Volunteers of the Year award recognizes the year-round creative work of an individual or team in support of a United Way of Bucks County campaign. Winners use best practices, imaginative special events, and strong communication plans to get their colleagues involved.

The team at **Bucks County Community College** is this year's Campaign Volunteers of the Year.

CAMPAIGN PACESETTERS AWARD

Pacesetter campaigns serve as an inspiration to others. They increase their annual campaigns 15% or more and have total giving above \$5,000 per year. Donations may come through employee giving, special events and fundraisers, corporate gifts, or a combination of these things.

- AON
- Cummins Power Systems
- Giant Food Stores
- JBT Corporation
- QNB
- TD Bank
- Sesame Place
- Wells Fargo

CAMPAIGN OF THE YEAR

This award goes to the company that runs the best overall campaign, including a creative theme, special events, and unique communication and outreach plans. Campaign of the Year most typically goes to a group that drives employee support through both events and corporate gifts or matches.

SUEZ Water Technologies & Solutions is being honored for having the Campaign of the Year.

LIVE UNITED AWARD

This award recognizes a group that shows what it means to Live United. They support the community by being generous with time, money, and resources. Award winners must engage and educate their team, run a United Way campaign, host special events, and invite colleagues to volunteer at one or more event during the year.

Penn Community Bank is the winner of this year's Live United Award.

BEST NEW CAMPAIGN AWARD

This award recognizes the company that did not previously run a UW Bucks campaign and had the best campaign results in their first year. Award winners typically work with UW Bucks to set an engaging campaign schedule that garners employee support through both events and corporate gifts or matches.

JBT Corporation is the winner of this year's New Campaign Award.

TRAVELING TROPHY AWARDS

Traveling Trophies go to the campaigns that have the highest per capita giving ratios during their campaign. The Corporate Giving Trophy is calculated by including corporate gifts, matching gifts, and sponsorship gifts. The Employee Giving Trophy is calculated by including employee gifts and special event dollars raised by employees.

Corporate Giving: Business with More Than 100 Employees
SUEZ Water Technologies & Solutions

Corporate Giving: Business with Less Than 100 Employees
ITW (M&C Specialties)

Employee Giving: Business with More Than 100 Employees
SUEZ Water Technologies & Solutions

Employee Giving: Business with Less Than 100 Employees
Customers Bank

United Way of Bucks County Member Agencies

United Way of Bucks County brings people together for the greater good. Our partners currently include dozens of nonprofit member and affiliate agencies, hundreds of business partners, and countless community partners.

We are proud of our partnerships because getting things done in Bucks County is a team effort. We believe that the more perspectives you have, the more ways you can find to approach the issues that destabilize our community. That's why we bring together a diverse coalition of partners, using our collective time, talent and treasure to shape an agenda for change.

By rallying people around a shared sense of purpose, we can direct our time, efforts, and funds to the programs that best address local issues. We can direct our resources to where they will make the most difference.

We invite you to take a look at our partners – and know that every partner, business or agency, works together to make this a stronger, healthier community. These are the people who LIVE UNITED.

A Woman's Place
Advocates for the Homeless and Those in Need
Aid for Friends
Aldie Foundation, Inc.
Big Brothers Big Sisters of Bucks County
Bucks Association for the Blind and Visually Impaired
Bucks County Opportunity Council, Inc.
Bucks for Kids
Central Bucks Family YMCA
Children's Developmental Program, Inc.
Credit Counseling Center
Emergency Relief Association
Family Service Association of Bucks County
Good Friends, Inc.
Habitat for Humanity of Bucks County
Hands Holding Hearts
Legal Aid of Southeastern Pennsylvania-Bucks

County Division
Libertae, Inc.
Lower Bucks Community Centers, Inc
Lower Bucks Family YMCA
Maternity Care Coalition
NOVA
Pennadel Mental Health Center
Philadelphia Diaper Bank
Quilts for Kids, Inc.
Single Parent Fellowship
The Children's Home Society of New Jersey
The Fiaria Project
Twilight Wish Foundation
Upper Bucks County YMCA
Vita Education Services
Welcoming the Stranger
Worthwhile Wear, Inc.
YWCA Bucks County



Experienced. Dedicated. Professional.
Your Full Service Law Firm

<p>Langhorne 680 Middletown Boulevard Langhorne, PA 19047 215-750-0110</p>	<p>New Hope 123 West Bridge Street New Hope, PA 18938 215-862-0701</p>
---	---

www.begleycarlin.com

Personal Attention.
Proven Results.

**GIVE.ADVOCATE.VOLUNTEER.
LIVE UNITED™**



**REACH OUT A
HAND
TO ONE
INFLUENCE
THE CONDITION
OF ALL.
GREAT THINGS
HAPPEN
WHEN YOU**

LIVE UNITED.

Supporting neighbors. Building community.

For more than 145 years, BB&T has earned the trust of our clients with a local approach to banking. Understanding the fabric of our community. Being there when our neighbors need us. Encouraging what makes our community unique. That's why we're proud to support United Way of Bucks County.



All we see is you.™

Mike Rainone, Market President
610-263-8638 | MRainone@BBandT.com

Member FDIC. Only deposit products are FDIC insured.

BANKING | INSURANCE | INVESTMENTS



SUEZ is proud to support
our communities through
the United Way.

