

BUCKS UNITED

UNITED WAY OF BUCKS COUNTY ANNUAL REPORT & MAGAZINE

IN THIS ISSUE

CEO CORNER: GIVING
AS A CORE VALUE.....15

FOOD ACCESS28

EDUCATION.....36



If you need help, 2-1-1 can connect you.

Feeding your family. Becoming a volunteer. Getting your taxes done.
Avoiding eviction. Keeping your heat on. Joining the workforce.
Connecting to support groups. Finding a recovery center.
Caring for your grandmother. Protecting a friend.

24 hours a day. 7 days a week. 365 days a year.
Free, confidential, multilingual information & referrals
to Bucks County services.

If you need help, just dial 2-1-1.



Table of Contents



20



24



36



44

- 3 Message from CEO Marissa Christie & Board Chair Todd Alderfer
- 4 Your United Way Board & Staff

AWARDS & RECOGNITION

- 7 Kelton Service Award
- 9 Paul Sauerbry Award
- 11 Founder's Award
- 13 Campaign Volunteer of the Year Award
- 58 Thank You to Our Partner Companies & Organizations
- 60 Thank You to Our Leadership Donors
- 63 Campaign Awards
- 66 Impact Awards
- 69 Annual Breakfast & Bucks United Magazine Sponsors

BUSINESSES GIVING BACK

- 15 CEO Corner: Giving as a Core Value
- 16 SUEZ: Helping Communities Thrive
- 19 FIRST BANK: Changing the Game in Bucks

LOCAL PERSPECTIVES

- 20 Seven Historic Main Streets in Bucks County
- 24 500 Acres of American History
- 26 Ability Tools at Bucks County Free Library

MAKING AN IMPACT

- 28 Food Access
- 34 Emergency Needs & Financial Stability
- 36 Education
- 48 Housing & Homelessness

ANNUAL REPORT

- 50 United Way of Bucks County: By the Numbers
- 52 Statement of Operations
- 53 Expenditures Made Easy
- 55 Funded Programs 2018
- 57 Member Agencies



32

Supporting neighbors. Building community.

For more than 145 years, BB&T has earned the trust of our clients with a local approach to banking. Understanding the fabric of our community. Being there when our neighbors need us. Encouraging what makes our community unique. That's why we're proud to support United Way of Bucks County.



All we see is you.™

Mike Rainone, Market President
610-263-8638 | MRainone@BBandT.com

Member FDIC. Only deposit products are FDIC insured.

BANKING | INSURANCE | INVESTMENTS

Message from CEO Marissa Christie & Board Chair Todd Alderfer



Marissa Christie
President & CEO
United Way of
Bucks County



Todd Alderfer
Board Chair
United Way of
Bucks County

At United Way of Bucks County, we enter every year knowing that change is inevitable. We have a choice: We can simply adapt, or we can strategize so that we can grow, improve, and progress. We choose the latter.

Last year, we set some big goals. We wanted to significantly increase access to Pre-K education and to childcare scholarships for low- and moderate-income families. We wanted to improve the health of people who are hungry and food insecure by increasing access to

our team – board and staff – to view all we do with a critical eye. It is not about what looks good or what feels good. It is about what does the most good in our community.

We run everything we do through a filter based on outcomes and return on investment. We begin with the end in mind. If we are going to serve more people – and serve them better – what do we need to start doing? What do we need to stop doing? Do we need to be doing more in some areas? And to balance that, do we need to be doing less in other areas?

“We aspire to be game-changers in everything we do. We know that we may not win every time, but we give our work everything we’ve got.”

good, healthy food. We wanted to serve more people who are homeless (or at risk of homelessness) in Bucks County to help ensure that in our community, homelessness is brief, rare, and non-recurring.

We are proud to say that with the support of our donors, advocates, volunteers, staff, and board, we have improved and expanded in each of these areas.

It has been exhilarating, but it has not been easy. Achieving these kinds of results requires each person on

We aspire to be game-changers in everything we do. We know that we may not win every time, but we give our work everything we’ve got.

Here’s what we need from you as we enter our next season: Get in the game with us. Commit your time, your talent, and your resources. Show up when team Bucks County needs you.

It takes a lot to change things for the better. It takes talented people. It takes time and commitment. But at the end of the day, nothing changes the game like teamwork. 🧡



BCHG’s mission is to assist homeless and low-income families in establishing and maintaining permanent affordable housing

626 Jacksonville Road, Suite 140, Warminster, PA 18974

215-394-8259

www.bchg.org



Your United Way Board & Staff



Todd Alderfer
Board Chair
Senior Vice President,
QNB Bank



Michele Anderson
Project Assistant,
Pre-K Counts



Paul Bencivengo
Board Member
Vice President,
Visit Bucks County



Denise Bowman
Board Member
Partner, Anthiel,
Maslow, & MacMinn, LLP



Justin Brown
Board Member
Director of Pigment
Dispersions, Quaker
Color



Danielle Bush
Director,
Community and
Volunteer
Engagement



Robert Caruso
Board Member
Community Member



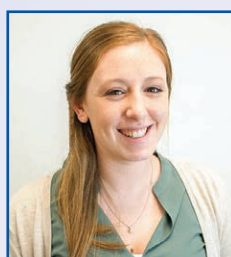
Marissa Christie
President &
Chief Executive
Officer



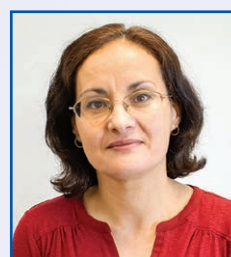
Kevin Crawford
Board Treasurer
Vice President,
Relationship Manager,
Commercial Lending,
WSFS Bank



Steve Gallucci
Board Member
Store Manager
Wegmans



Jessica Gershenfeld
Community
Impact
Associate



Candi Guerrero
Impact Director
for Education



Shannon Hibbs
Database
Manager



Brian Jeter
Board Member,
Immediate Past
Chair
Sr. Director of
Government &
Community Affairs,
Comcast Cable



Heiner Markhoff
Board Member
President & CEO,
SUEZ Water
Technologies &
Solutions



Katie Matarazzo
Resource Development Associate



Catherine McElroy
Board Member
Community Member



Patricia Miiller
Project Manager - Success by 6 & Pre-K Counts



Brian Papsun
Board Member
Senior Tax Manager, Grant Thornton LLP



Faith Parkinson
Director of Finance & Administration



JoAnn Perotti
Board Member
Director of Strategic Services, Bucks County Intermediate Unit #22



Dennis Pfleiger
Board Member
President, St. Luke's Quakertown Hospital



Tim Philpot
Impact Director for Health



Claire Quinn
Board Member
Bristol/Croydon Site Leader & Croydon Emulsions Production Leader, Dow Chemical Company



Sheri Ratner
Donor Relations & Events Manager



Francis J. Sullivan, Esq.
Board Secretary
Attorney, Founding Partner, Hill Wallack, LLP

Honorary Life Members

Jacqueline Bowers
Dr. Gary L. Bowman
Kathy Brett
Lynn T. Bush
Richard O. Coe
Michael Connor
Karen Dawkins
J. Peter Dominick
Thomas P. Donnelly, Esq.
James Dowling
Grover Friend
David J. Gondak
Trish Markel-Mulligan
Jack McCaughan
Mark Worthington



Matt Uhler
Director of Resource Development & Impact Director for Financial Stability



Jeane Vidoni
Board Member, Vice Chair
Community Impact
President & CEO, Penn Community Bank

In Memoriam

Harold Oswald, Jr.
Samuel Snipes, Esq.
Carl Wallnau, Esq.

**Hill Wallack LLP
is honored to support the
United Way of Bucks County.**

**Congratulations to the
Award Winners**

**David Gondak
Brian Papsun
Francis J. Sullivan**

**Hill
Wallack** LLP
Attorneys at Law

Michael Kahme
mkahme@hillwallack.com

David J. Truelove
dtruelove@hillwallack.com

Yardley, PA | Princeton, NJ | Cedar Knolls, NJ | Red Bank, NJ
www.hillwallack.com | 215.579.7700

Kelton Service Award Winner



Each year, a member of the United Way of Bucks County Board of Directors is awarded the Dr. Stanton Kelton Award. This long-standing award recognizes an individual who has made a significant contribution over the past year to the goals of the United Way of Bucks County and its mission in the community. This award honors the memory of Dr. Kelton, a compassionate and generous board member from 1966 to 1993, who was dedicated to advancing this community.



Brian Papsun

This year, Brian Papsun is being honored with this prestigious award. Brian is a Senior Tax Manager with Grant Thornton, LLP. He joined the board of United Way of Bucks County in 2018 where he was co-chair of the Emerging Leaders group. Brian has been instrumental in getting the Bet on Success fundraiser off the ground and, as a father of 2, he is passionate about helping families with young children. Brian is a creative thinker whose enthusiasm and energy is unsurpassed. Fellow board members and UW Bucks staff love having Brian on their team.

What do you like best about living in Bucks County?

For me, what I like most about Bucks County is that it is home. I grew up in Bucks County, and me and my family all still live in Bucks County.

Can you recall the first time in your life that you gave – time or money – to a nonprofit? What do you remember about that experience?

Yes. When I was young, I volunteered at the Churchville Nature Center. For a kid, the work wasn't terribly exciting – picking up trash or stuffing envelopes – but I always felt great when I left there.

be a fulfilling experience for both you and the organization.

Why do you want to see more young people engaged in philanthropy?

In anything we do, we need to be stewards and leave things better than when we came upon them. No matter what your circumstances, everyone has something they can give whether that be time, money, knowledge, etc.

What might people be surprised to know about you?

I ran the Bucks County half marathon twice – and both times with very little training beforehand. I still look back

“In anything we do, we need to be stewards and leave things better than when we came upon them.”

What has been the most rewarding or memorable volunteer experience you've had through UW Bucks?

Without a doubt, the Bet on Success event and seeing the results of that through to making scholarship awards to those in need in our community.

What would you tell someone thinking of getting involved with a Bucks County nonprofit?

Get involved in something you enjoy and are passionate about. You don't have to be involved in every endeavor of the organization, but if you can give your best to a particular area or cause, it will

and am not exactly sure how I ran the 13.1 miles each time.

What's your favorite thing to do in Bucks County?

Anything outdoors – it is great to get the kids outside too! 🍷

THANK YOU

For Making A Difference.

Comcast NBCUniversal is proud to support the
United Way of Bucks County.



comcastcorporation.com

The Enterprise Way

Supporting the community. That's the Enterprise Way.

*Proud supporter of the
United Way of Bucks County.*



©2015 Enterprise Rent-A-Car. F04552 3.15

Paul Sauerbry Award Winner



The Paul Sauerbry award is given annually to a volunteer who, over an extended period of time, has demonstrated commitment to the community through innovative leadership, stimulus for volunteer action by others, courage to overcome obstacles, and dedication and creativity in the development of programs to meet community needs. The award honors Paul Sauerbry, President of United Way of Bucks County from 1964 to 1974.



Francis J. Sullivan

This year, Francis J. Sullivan is being honored for his dedicated service to United Way of Bucks County. Frank has been a long-time supporter of UW Bucks both as a leadership donor and Board Member. He has served as Secretary of the Board and has sat on both the Governance Committee and the Finance Committee. His legal expertise and leadership skills have been invaluable in setting strategic priorities.

Frank's commitment to staff and fellow board members has been deeply felt and is greatly appreciated at UW Bucks and beyond.

Your peers on the United Way of Bucks County board of directors recognize you as someone who demonstrates exceptional leadership and dedication. What inspires you to serve your community?

It's a cycle of doing good. Serving inspires me to serve more. As an attorney, we're taught to give.

How did you first get involved with United Way of Bucks County?

I was asked to join the board by a few other board members.

What aspects of your work with United Way are you most proud of?

Every organization faces challenges.

"Serving inspires me to serve more. As an attorney, we're taught to give."

I was proud to be able to help United Way through some challenging times and see the success it is having today.

Hill Wallack supports a number of number of nonprofits in Bucks County. What drives this support? Why is it important for your organization?

We're a part of the community and it's important that we give back to where we live and work. It's important to have healthy, reliable, vibrant communities.

In your opinion, what is the best way to inspire the next generation of donors, advocates, and volunteers?

Do a really good job of telling them your story, and then ask them to help out.

Can you recall the first time in your life that you gave – time or money – to a nonprofit? What do you remember about that experience?

In college, I was in a fraternity. We were involved in a lot of community projects. I remember we served as mentors to younger kids – the feeling of doing good just stuck with me.

If you could improve one thing about Bucks County, what would it be?

The transportation system.

Who would play you in a movie of your life?

Kevin Costner

What might people be surprised to know about you?

I'm an immigrant. 🇺🇸

WE'RE RIGHT AROUND THE CORNER. AND ALWAYS IN YOURS.

WSFS Bank and Beneficial Bank have been neighbors for almost 200 years, sharing similar philosophies in doing what's right and being committed to helping the communities where we live, work and play. Now we are becoming one community bank to serve the Greater Delaware Valley.

That's why together, we are honored to support the
United Way of Bucks County.

WSFSBANK.COM / 1.888.WSFSBANK



©2019 WSFS Bank | Member FDIC | NMLS# 417673

WSFS bank
We Stand For Service®

Beneficial BANK

Founder's Award Winner

The Founder's Award was established to recognize a truly outstanding community builder. Honorees must demonstrate exceptional commitment to positive community impact in Bucks County over an extended period of time. This award is only given by special request of the United Way of Bucks County's Board of Directors.

David Gondak

David Gondak is being honored with the Founder's Award for his exceptional service to United Way and the Bucks County community.

By Richard Coe



Pictured left to right are Jeane Vidoni, Richard Coe, David Gondak, Nancy Gondak

When I joined the United Way Board around the year 2000, David was a longtime member of the board and was likely already an honorary member of the board. Although not officially designated as such, David was a mentor to me and many others in learning the ropes about how to become a contributing board member. He did so through his example of board participation and leadership, committee membership, soft spoken but firm expression of beliefs, willingness to compromise, and volunteer spirit.

David is the model for "local boy makes good." He grew up in the early days of Levittown, graduated from Pennsbury School District, earned his college degree from Penn State University, served in the United States Navy, and had a long and distinguished career as a high school science teacher with the Central Bucks School District. The culmination of his professional career included service as the president of the statewide Pennsylvania State Education Association (PSEA).

As a member of the United Way board, David served as board chairman and was awarded the Kelton Award in 2001

and Sauerbry Award in 2006. At one time or another he probably served on every UW board committee. David led the United Way to create its first strategic plan and worked on every step from organizing the process to formatting and editing the final product. More recently he participated in the community forums that helped us forge a community impact plan. In addition to his contributions to the community through his United Way membership, David has served on the Bucks County Council of the Boy Scouts of America.

On a personal level, David is a devoted husband to his wife, Nancy, who is also a community contributor. She has been a force in Bucks County to develop a strong network of pre-school programs for underserved children. David continues to make regular visits to Levittown to provide support to his 100-year-old mother who still lives in her own home.

To this day David continues to be engaged with the Bucks County United Way as a board member providing wise counsel and being open to new ventures without retreating to the slogan, "This is the way we used to do things." 🍷



PECO powers communities.

PECO is committed to helping the communities we serve. That's why we volunteer and provide more than \$6 million a year to local community and nonprofit organizations across our region.

PECO is proud to support the United Way of Bucks County in their tireless efforts to build a stronger tomorrow together.

To find out what else PECO powers in our community, visit peco.com/pecopowers



© PECO Energy Company, 2019



An Exelon Company

Campaign Volunteer of the Year Award: Chris Stanley from Neshaminy School District

The Campaign Volunteer of the Year Award recognizes the year-round creative work of an individual or team in support of a United Way of Bucks County campaign. Winners use best practices, imaginative special events, and strong communication plans to get their colleagues involved. Whether they're called campaign coordinators, campaign volunteers, or ECCs, these are the volunteers who plan, monitor, communicate, and advocate to ensure success. They are, without question, some of the most important and impactful United Way volunteers.

This year's award goes to Chris Stanley from Neshaminy School District. Chris is the Communications Coordinator for Neshaminy and has been helping with the United Way campaign for several years. Facing year over year declines Chris decided to change things up this year, and our friends in Neshaminy School District met his challenge.

What made your campaign a success this year?

For the campaign this year I worked with United Way to take a data-driven approach. I asked them for information on past campaigns and turned that into charts which clearly showed the challenge we faced in reversing a trend of declining totals. I shared those charts with our staff. I think that visual was very effective.

In addition, we ran a fun "Website Takeover" challenge in partnership with Pennsbury School District (our main sports rival). The district with the most new pledges over the course of the campaign was allowed to "take over" a banner photo spot on the home page of their rival for a day with a bold "Pennsbury beat Neshaminy" or "Neshaminy beat Pennsbury" graphic image in their corresponding school colors. Information about the United Way of Bucks County and a donation link was also added to the image as well.

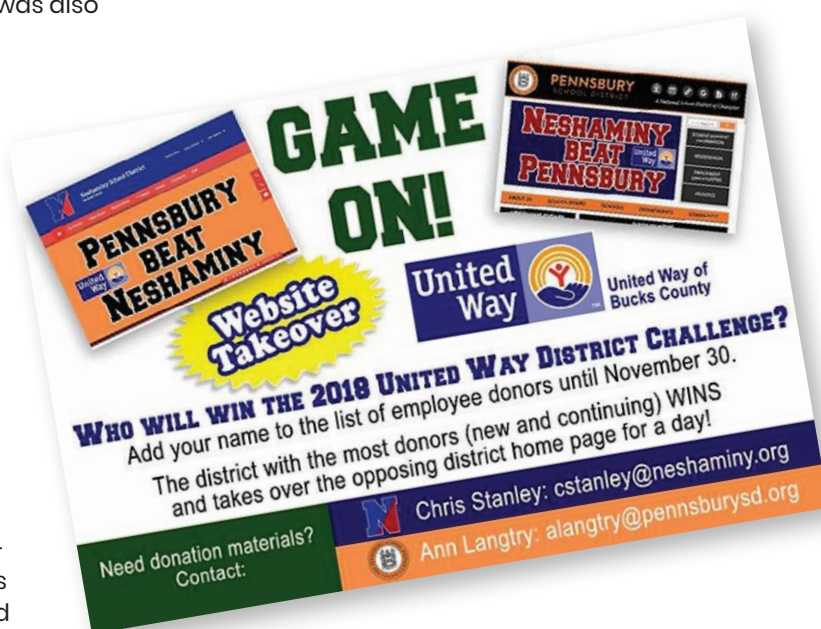
Neshaminy has historically run one of the strongest giving campaigns among Bucks County schools, what do you think makes the teachers and staff at Neshaminy so unique in this respect?

Quite a few of our staff members live in the community and many even graduated from Neshaminy schools. It's a strong and genuinely caring community that constantly impresses me with their generosity and

concern for their students and their families.

As director of communications, what messages do you find most effective in raising funds and awareness?

When crafting appeals, I remind our staff of the United Way funded programs they see in action right in their own schools all year long, everything from Stuff the Bus and food pantry programs to housing services. These are programs that fit in with our own District Mission Statement which states, "People have a responsibility to themselves and others" and "Excellence in education requires support, sacrifice, and involvement from the total community." A donation to United Way is really an investment in our community - which benefits everybody regardless of whether they take advantage of those funded programs or not. 🙌





Your Business Is Our Business



YESTERDAY

142 years of independence, serving businesses of all sizes in our area.



TODAY

Long-time business bankers dedicated to raising the bar on service.



TOMORROW

Strong, true to our roots and committed to the community.



215-538-5600



QNBbank.com



Visit any of our 11 offices in Colmar, Coopersburg,
Dublin, Pennsburg, Perkasie, Quakertown,
Souderton, Warminster & Wescosville



BUSINESSES GIVING BACK:

CEO Corner: Giving as a Core Value



Timothy M. Andrews

President and Chief Executive Officer, Advertising Specialty Institute (ASI)

I remember when my disabled mom filed for welfare and got a new Medicaid card. She let me open the first check: \$12. In those days, we shopped with food stamps and ate better than ever. I also remember many years when firemen delivered holiday gifts wrapped by neighbors helping neighbors.

Today, I'm proud to say "We care" is an integral part of ASI's corporate values. All year long, employees donate time, goods and cash to nearly a dozen community nonprofit organizations. New this year: A "Day On" of service in honor of either Dr. Martin Luther King or International Holocaust Remembrance Day. We also make it easy to donate to United Way through automatic paycheck deductions, which include a company match.

I always tell employees, "every dollar counts, and every dime matters. Remember, \$12 gave me hope – and a positive outlook for my future."



David Freeman

President and Chief Executive Officer, QNB Bank

As a community bank, we know that QNB Bank is only as strong as the communities we serve. We support the United Way because of its broad impact on the communities we serve, the leveraging of our dollars, and knowing that the dollars we contribute are being spent wisely.

It is remarkable the good that our 190 employees do in our communities with their gifts of time, talents, and treasure. We look forward to continuing our streak of record United Way campaigns this coming year.



Dennis Pfleiger

President, St. Luke's Quakertown Hospital

St. Luke's believes in partnering with organizations within our community to help improve the lives of others. We believe that we are very fortunate as an organization and we encourage our staff to give back in the form of time, talent, and treasure. Our staff, from leadership to frontline employees, gives back to our communities in various ways each year. We are involved with reading projects, helping families at the holidays, finding innovative ways to provide access to care, and giving financially to different community organizations. These acts of volunteerism work to solidify that healthcare is not just about what happens to people within the hospital, but also that we are deeply concerned about them as a complete person.



Dr. Stephanie Shanblatt

President, Bucks County Community College

Since our founding in 1964, Bucks County Community College has transformed the lives of thousands through access to higher education. Therefore, it comes naturally for us to give back, whether through campus-wide food drives, scholarship fundraisers, student volunteers, or the United Way campaign. When we help one person, we help to strengthen our entire community. 🍎

BUSINESSES GIVING BACK: SUEZ: Helping Communities Thrive

by Heather Peters

Global HR Business Partner and Organization & Talent Development Leader



SUEZ Water Technologies & Solutions has been a corporate partner of United Way for many years. Hundreds of SUEZ employees give their support through the annual campaign, advocacy, and volunteerism.

Many years ago, as a college student, I distinctly remember my introduction to Sociology professor boldly announcing to the class that “humans are social beings and we need other humans to survive.” Now, years later, I find myself still reflecting on this statement. My experience has taught me that not only do we need each other to survive, but when we’re connected to our friends and neighbors and co-workers; when we’re connected to our community, we thrive.

Our lives are surrounded by people—those we see and those we don’t. Many of us can name people who are directly responsible for helping us thrive in our day to day lives. Maybe it’s a family member, or a close friend, or maybe it’s a neighbor that we don’t know well, but we know is always there in case we may ever need a person to call. Maybe it’s the cashier at the grocery store who smiled and made us feel good at the end of a long day. These people are part of our communities.

I am quite blessed to be a member of many different communities. One of the communities of which I am very proud, is my work community. As a part of SUEZ’s Water Technologies & Solutions (WTS) team, I am especially proud of the way we come together to support the community through our

annual UW Bucks campaign. Thanks to the tremendous support from our leadership team, we’re able to dedicate time and resources here on the Trevoise WTS campus and in many of our large North America sites. Ironically, not only do we come together to strengthen the Bucks County community, but we also build strength within our own WTS community.

This past year, our campaign theme was “It’s a Shore Thing.” We did our best to bring the shore to the office in Trevoise with treats of salt water taffy and competitive games of volleyball and cornhole. As a special treat to our campaign, we had a guest speaker, Eileen. Eileen bravely spoke to the entire Trevoise campus about her experience with Fresh Connect, a free farmer’s market that brings fresh and healthy food to our hungry neighbors. She spoke of how the Fresh Connect community has become an important part of her life during a difficult time. She told her story of how things have changed for the better for her and what her weekly trips to Fresh Connect have meant to her. She made us all laugh, she made us teary, but most of all, she made us all think.

Humans need other humans, not just to survive, but to thrive. 🍷





“Humans need other humans, not just to survive, but to thrive.”





First Bank is Proud to Support
*the **UNITED WAY***
of Bucks County!

Visit your personal bankers
in our **Trevose, Warminster** and
Doylestown branches in Bucks County



firstbankpa.com • 877.821.BANK



16 Branches throughout New Jersey and Pennsylvania

BUSINESSES GIVING BACK:

First Bank: Changing the Game in Bucks County

by Gwendelyn Fisher

Assistant Treasurer/Marketing Department Manager



On April 23, 2007, First Bank commenced operations at its office at 1229 South Black Horse Pike in Williamstown, NJ. Through organic growth as well as acquisitions of Heritage Community Bank based in Morris County, NJ, Bucks County Bank in Bucks County, PA, and Delanco Federal Savings in Burlington County, NJ, First Bank has grown from one to 16 branches, as well as having Loan Production Offices in Mercer and Morris Counties in New Jersey, and Bucks and Chester Counties in Pennsylvania.

As we continue to grow and expand, we remain committed to doing our part to help grow the economy and better the communities we serve. With new branches, new markets, new products, and new technology all under consideration, we are excited for the future. Pat Ryan President and CEO of First Bank said, "When you give good, you get better." Meaning that when you are giving and community minded, you not only improve the quality of life around you, but you also create your own success.

First Bank employees are committed to getting involved in the communities in which they work, live, and play. In 2018, employees recorded over 3,500

hours of community service and volunteering. They seek out opportunities where help is needed and First Bank is proud of their initiative and dedication to serving their communities.

First Bank employees in Bucks County are eager each year to get on the floor and help in the packaging of over 100,000 shelf-stable and nutritious meals at Bucks Knocks Out Hunger (BKO). In addition to this worthwhile event, First Bank's Bucks branches also participate in the Operation Helping Hand food drive each spring.

In 2018, First Bank gave over \$311,000 in donations, support, and volunteer time to the communities we support. We are proud of the areas where we live and work, and it shows. 🍷

FIRST BANK

Personal Bankers. Real Relationships.

7 Historic Main Streets in Bucks County

By Visit Bucks County

With so many landmark locations in Bucks County, it's sometimes hard to decide where to explore first. Our historic main streets are full of great tastes, sights and sounds.

BRISTOL

Bristol has its roots in freight and passenger transport, making the Delaware River a critical part of the area's history. Today, the river remains an important part of the community with landmark destinations and attractions along its banks such as the award-winning Bristol Riverside Theatre, King George II Inn, and Grundy Museum. Be sure to check out their first Friday events May through September.



DOYLESTOWN

Doylestown's name-sake is derived from a 1700s innkeeper by the name of William

Doyle. He operated Doyle's Tavern, which was located on what we know today as the town's Main Street. Though that public house is no longer around, other iconic destinations such as Hargrave House Bed & Breakfast, Maxwell's On Main and Jules Thin Crust have taken its place.



NEW HOPE

Originally known as Coryell's Ferry, New Hope houses more than 200 years of history and has one of Bucks County's most iconic Main Streets.

There's so much to experience including the eclectic shops such as Heart of the Home, riverside dining at The Landing, nightlife at Havana and attractions such as Parry Mansion and the Bucks County Playhouse.



NEWTOWN

Founded by William Penn in 1684, Newtown remains one of Bucks County's must-see historic areas. Its famous State Street, which is home to unique destinations and eateries, such as the Zebra Stripped Whale, Isaac Newtown's, and Rocco's at The Brick, balances the borough's history with contemporary experiences.



YARDLEY

Incorporated in 1895, Yardley Borough was once the home of several stops along the Underground Railroad, such as at the Continental Hotel. That location is now known as the Continental Tavern, which is one of the many dining locations to eat at along the area's Main Street. Other great options to try are Vault Brewing Company and Trattoria Rose Bianca.



QUAKERTOWN



Step back in time with a walk down W. Broad Street. Be sure to stop in McCoolle's at the Historic Red Lion Inn for dinner and catch a show at the Arts & Events Place. Shop at the unique Sine's 5 & 10 then grab a microbrew at Proper Brewing Company.

SELLERSVILLE



Enjoy a stroll through Lake Lenape Park or dine in style at The Washington House Hotel and Restaurant. The delicious menu changes seasonally. Then catch a live show next door at the Sellersville Theater.

*Photo Credits
Continental Tavern,
Jeff Fusco, Bill Johnson,
Anthony Sinagoga,
Visit Bucks County,
Visit Philadelphia*



500 Acres of American History

By Friends of Washington Crossing Park

Washington Crossing Historic Park offers more than 500 acres of American history, natural beauty and family fun. The park preserves the site where George Washington crossed the Delaware River in 1776 and turned the tide of the Revolutionary War.

Today, the park hosts thousands of visitors every year, from local schoolchildren to visitors from around the world, who come to see the point from which a battered and dispirited American army launched a counterattack that reversed its long losing streak, preserving its will to fight and maintaining the revolutionary spirit that would lead to independence for the United States.

But Washington Crossing Historic Park represents much more than a single historical event. The park contains Bowman's Hill Tower, a restored grist mill, picnic pavilions, and historic collections. Colonial buildings in the park, such as the Thompson-Neely House and McConkey Ferry Inn, give many clues about living conditions during the Revolutionary era. Later era homes and shops reveal how 19th-century rural Pennsylvanians lived and worked.

With events such as book clubs, lectures, living history events, the Washington Crossing Brewfest, and Music on the Riverbank, there's always something happening at Washington Crossing Historic Park. 🍷





Ability Tools at Bucks County Free Library: Try Before You Buy

by Michelle Wexler

Development Director, Bucks County Free Library

Everyday tasks that many people take for granted can be difficult for those who need mobility and ability assistance. Recognizing this, Bucks County Free Library (BCFL) has created a new collection:

Try It: Ability Tools. These useful gadgets and devices can help make life easier for many people including those who:

- Need help getting in and out of a vehicle?
Try the Auto Cane.
- Want the comforting presence of a pet, but are unable to care for a live animal?
Try the Companion Pet Cat
- Have difficulty putting on and removing socks?
Try the Sock Slider
- Need assistance getting up or down from a kneeling or sitting position?
Try the EZ-Riser
- Want a lightweight, foldable cane?
Try the Hurry Cane
- Need help getting hard-to-reach items?
Try the Grab It

BCFL encourages individuals to borrow items from the collection and test them out prior to purchase.

In addition to the items in its collection, BCFL Help Desk staff regularly demonstrate other helpful tools, such as a tablet that empowers seniors to connect with friends and family and smart devices with virtual assistants that help those with disabilities maintain many aspects of their daily lives.

As a BCFL patron who works in elder care commented, "It's very valuable to not only see the tools that are available, but also be able to try them."

To view the entire collection and to place holds, visit the BCFL online catalog at

www.buckslib.org

and search for "BCFL ability tools". 🍷



Making an Impact in Bucks: Food Access

GOAL:

Increase access and availability of nutritious food.

WHAT'S NEXT?

Advocate on behalf of our food insecure neighbors.

Expand our partnerships and develop long-term goals to systemically address issues related to food access.

CHALLENGES:

- 9% of Bucks County residents and 16% of Bucks County kids are hungry or food insecure.
- Vulnerable populations – particularly children and the elderly – experience serious health issues when they don't get enough to eat and don't have access to nutritious foods.

SOLUTIONS:

- Programs like Bucks Knocks Out Hunger and Fresh Connect, our free, mobile farm market for low-income families and seniors, feed thousands of families in our community.
- Better logistic support in the form of transportation and storage for our food network will improve access to food for families in need.





163,567
pounds of food
distributed
through BKO
Hunger and
Operation
Helping Hand.

For many of us, having enough healthy food to eat is easily taken for granted. For the nearly 60,000 Bucks County residents who don't know where their next meal is coming from, access to nutritious food is a daily struggle. With our partners, UW bucks is ensuring that people have the nourishment they need to function on a day to day basis, to support their families, and to work toward a better future.

Bucks Knocks Out Hunger:

This annual meal-packing event brings together over 600 volunteers to pack 125,000 shelf-stable meals. It supports food pantries and senior centers throughout Bucks County. In combination with Operation Helping Hand, a one-day food drive that engaged both businesses and schools, UW Bucks distributed over 160,000 pounds of food in 2018.

Fresh Connect:

This free mobile farm market operates in three locations every week: Bristol, Ottsville, and Warminster. Fresh Connect ensures that people have access to fresh produce and other healthful foods. Families are consuming more fruits and vegetables, cooking more meals at home, and feel their overall health has improved.

As a member of the **Hunger Nutrition Coalition of Bucks County**, we use the tools of advocacy and education about food insecurity to change minds and policies, so that those who are food insecure are not marginalized or forgotten. 🍌

Making an Impact in Bucks: Food Access



**FRESH
CONNECT**
BUCKS COUNTY

my family would not have food to eat if we didn't have this great program. Thank you so much you guys and gal's are great, so sweet. Thank you again.



My daughter, age 6, drew our family getting fresh product from Fresh Connect. She said, "I drew a picture of us getting fresh strawberries and carrots because they are my favorite and make me happy!"

I personally would like to thank Fresh Connect without there help I would not be able to see (and feed) my 2 grandchildren as often as I do now.
(Because of Fresh Connect)

18%

increase in Fresh Connect participants who eat fruit 3-4 time per week.

Making an Impact in Bucks: Food Access

79% of Fresh Connect visitors surveyed prepare the sample recipes provided at the program.



Absolutely, the best nutrition is fresh food. With food stamps you still have to ration and fresh veggies are not affordable

I ended up homeless after 10 years
in a domestic relationship I had no
place to live and very little money
so food shopping was very limited
Thank to Fresh Connect I have
been able to have food.

Thank you



340,625 pounds of food distributed
through Fresh Connect.

Making an Impact in Bucks: Emergency Needs & Financial Stability

GOAL:

Improve safety net programs and provide supports so that short-term hardships don't spiral out of control.

WHAT'S NEXT?

Work with partners to make sure lack of transportation doesn't prevent people from getting a job or keeping the job they have.

Expand "the shed" operations to provide a greater array of home goods and furniture to families in need.

CHALLENGES:

- Many working families can't cover a \$500 emergency. 30% have no savings at all.
- For low-income working families, a one-time issue can trigger a downward spiral that can end in loss of a job and even homelessness.
- For low-income seniors living on a fixed income, an unexpected expense is impossible to cover. It can mean skipping medications, missing meals, or living in an unsafe environment, all of which have serious health consequences.

SOLUTIONS:

- Provide emergency assistance with basic needs, like utilities, transportation, and housing.
- Provide other financial supports in the form of holiday help and household goods.
- Families with financial problems that can't be solved by one-time assistance are referred to more intensive programs, strengthening our local safety net.



1,187

Number of children who received gift cards through the Holiday Gift Card Drive.

107

Number of households that received utility assistance.

238

Number of applications for benefits submitted on behalf of area seniors.

Left: Volunteers from Cummins provide free oil changes to ensure people in need have safe, reliable transportation.

Right: Volunteers from Janssen help purchase and sort gift cards during the UW Bucks Holiday Gift Card Drive.

Far too often families in Bucks County are forced to make tough financial decisions. They must decide between food and utilities; school supplies or clothing; medications or paying the rent in full. When people are struggling and living paycheck to paycheck, one setback can be catastrophic, and every little bit helps. By providing emergency one-time assistance and additional supports, our collective efforts are helping people bridge that gap and ensuring that they don't fall further behind.

Emergency Needs Fund:

The Emergency Needs Fund is a collaborative effort that provides help when residents need it most. Funds are used to assist with utilities, car repairs, transportation costs, rent, and a host of other basic needs.

Senior Benefits Navigation:

More and more seniors are experiencing financial hardships. Many of them worked hard all their lives only to find themselves struggling to meet their basic needs in retirement. In 2018, the senior benefits navigation program successfully secured benefits valued at over \$740,000 for Bucks County seniors.

The Shed:

For many people who are just getting back on their feet, a new start might mean a new place to call home, a new support network, new skills, or a new job. For years, The Shed has given people a sense of home by providing them with comforter sets, sheets, blankets, towels, household goods, and small appliances.

Holiday Gift Card Drive:

For families in need, the holiday season can be particularly stressful. Heating costs go up and household budgets are stretched. For families with older children, the Holiday Gift Card Drive provides gift cards for food and popular retail stores. It ensures older kids aren't left out during the holiday season and helps families during a financially stressful time of the year. 🧡

\$784,860

Value of household goods donated through The Shed.



Making an Impact in Bucks: Education

GOAL:

Increase access to high quality early care & education.

WHAT'S NEXT?

Expand both public and private support for Pre-K scholarships.

Launch iSTEAMM: a one-day conference for 7th and 8th graders.

CHALLENGES:

- 68% of eligible children do not have access to publicly funded Pre-K.
- The cost of early care & education for just one child averages over \$11,000/year. For low-income working parents, that is often their biggest expense.
- Nearly 3 out of 4 parents depend on child care to be able to work.
- Children who have economic, developmental, and other disadvantages are at risk of school failure.

SOLUTIONS:

- Pre-K scholarships for low-income families help children get on the path to academic success and help parents get to work so they can support their families.
- Decades of research shows that while all kids benefit from early education, low-income children show the greatest gains.
- Public and private funding for early care & education provides short-term and long-term benefits to children, families, and communities.



\$1,248,194

Value of Pre-K scholarships provided to Bucks County families.

197

Number of adults and children who received parenting education and support.

1,894

Number of children who received a free book.

UW Bucks is committed to the young people in Bucks County. Education and care for our youngest friends and neighbors is critical to the health and well-being of our communities. Investing in early care and education is one of the best ways to close the achievement gap and break the cycle of poverty.

Parent Education & Support:

For families in crisis, parenting education and support can be a lifeline. By helping families establish and maintain a safe and caring environment for their children, trained parent educators help families resolve issues and create family stability. In 2018, UW Bucks supported the addition of trauma counseling for parents receiving parent education as one more way to strengthen families.

Pre-K Scholarships:

Through a PA Pre-K Counts program, the Educational Improvement Tax

Credit, and United Way funding, UW Bucks provides Pre-K scholarships to families in need. This financial assistance allows young learners to access high-quality Pre-K programs throughout the county. Our flexible scholarships support working families who might not qualify for other sources of financial help.

Connecting Kids and Families to Resources:

United Way's Who to Call booklet is a handy resource for families with children. It puts the contacts of a host of resources right at their fingertips.

Barnes & Noble – Oxford Valley Book Drive:

Annual book drive provides books to families and ensures that literacy begins in the home. In 2018 UW Bucks distributed 1,894 books to children in need. 📖

Together, Safe, and Getting Ready for School Success!

Maggie is a single mom who works two jobs. She makes almost \$36,000 per year. That means she earns too much to get publicly funded help, but too little to cover the cost of her child's Pre-K tuition and childcare. Without help, this mom would not have been able to keep her child in a quality Pre-K and child care program. She feared she would lose both of her jobs.

Maggie's child needed to be safe and protected at school. The thing is that this mom was a victim of domestic violence. When she and her child left, they had to start over with half the income of before. With a UW Bucks Pre-K scholarship, Maggie was able to keep working, which means that she could keep their apartment, keep their health insurance, and keep her child safe. While Maggie is at work, her child can continue to get a high-quality Pre-K education. When she needed it most, Maggie had the assurance that her child was being cared for in a safe and nurturing program, the same program her child had been attending since the age of 2. Thanks to caring UW Bucks donors, this mother and child received financial and emotional support and a great early education that will prepare them for future success.

#girlSTEM / iSTEAMM

In 2018, #girlSTEM introduced 800 young women to STEM careers. In 2019, #girlSTEM becomes iSTEAMM. This one-day conference encourages young men and women in grades 6–8 to pursue careers in Science, Technology, Engineering, Arts, Manufacturing and Math (STEAMM). People working in STEAMM careers present hands-on lessons for the conference attendees giving them a glimpse of what a STEAMM career really looks like.



800 Number of girls who
attended #girlSTEM.

#girlSTEM / iSTEAMM

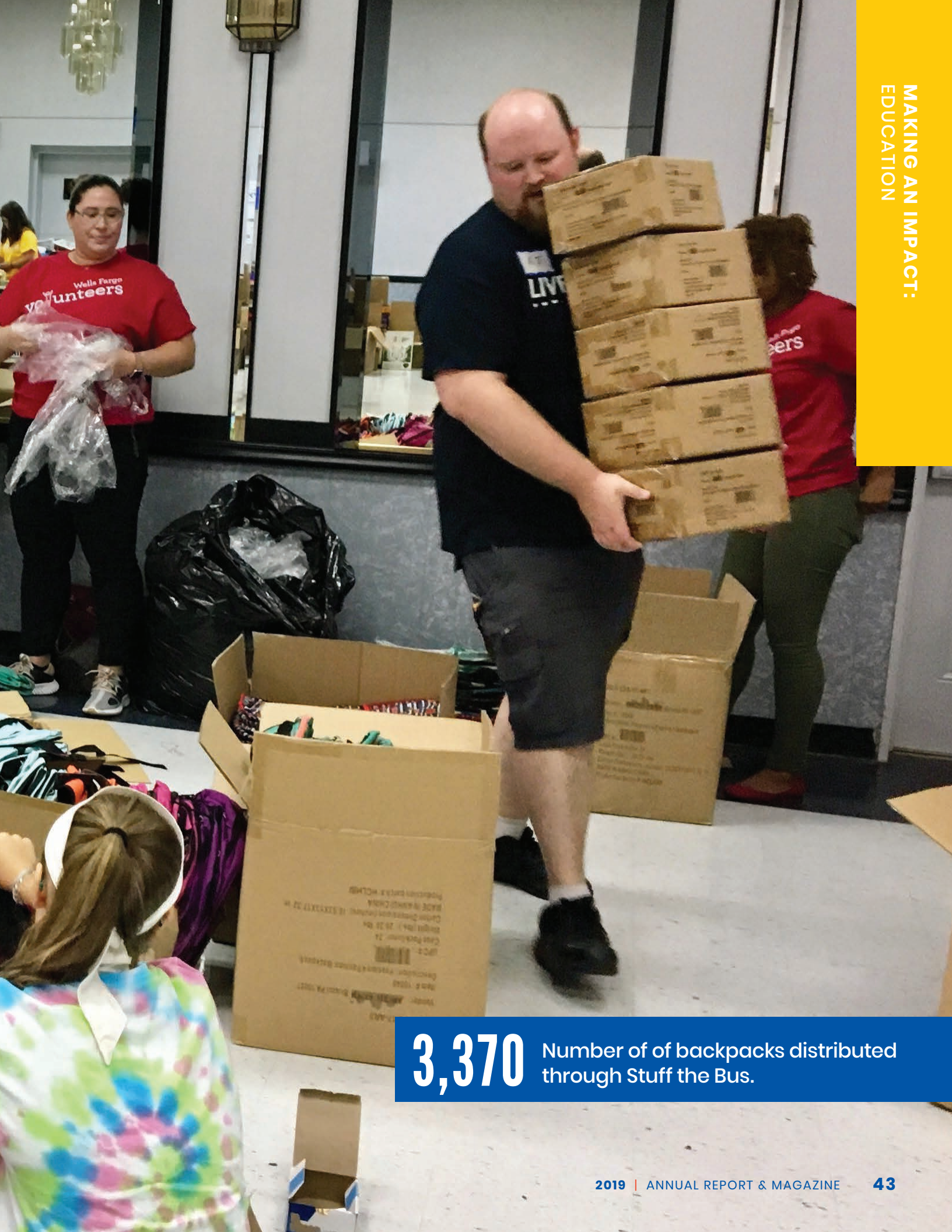




Making an Impact in Bucks: Education

Stuff the Bus

Stuff the Bus is a community-wide school supply drive that provides over 3,000 backpacks filled with school supplies to children in need. Stuff the Bus ensures that kids start the school year with the supplies and confidence they need to succeed.



3,370 Number of backpacks distributed through Stuff the Bus.

Stuff the Bus







Wegmans

1405 Main St • Warrington, PA 18976-2492
215.918.3900 • wegmans.com

Making an Impact in Bucks: Education

UW BUCKS EMERGING LEADERS:

Building
Connections
with a
Purpose

The UW Bucks Emerging Leaders are a growing network of young professionals working to create a stronger, healthier Bucks County. Through volunteerism, education, and networking, this dynamic group is building connections with a purpose.

Membership provides many opportunities throughout the year to strengthen personal and professional connections, learn from prominent local leaders about the issues that affect our community, and participate in volunteer activities that change lives.

As part of their mission, the Emerging Leaders help organize, plan, and coordinate the United Way's Bet on Success casino night fundraiser. All proceeds from this event provide flexible Pre-K scholarships for Bucks County kids. In 2018 Bet on Success raised over \$25,000 for Pre-K children.

To join the Emerging Leaders team visit:

www.uwbucks.org/emergingleaders/



Making an Impact in Bucks: Housing & Homelessness

GOAL:

Reduce the number of people experiencing homelessness.

WHAT'S NEXT?

Improve on coordinated street outreach and look for additional system-wide improvements.

CHALLENGES:

- Locally, homelessness is nearly invisible and therefore hard to address.
- Over 75,000 Bucks County residents are considered rent burdened, meaning they spend over 30% of their monthly income on housing costs.
- 35% of the people counted in the Bucks County annual point in time count are children under the age of 18.

SOLUTIONS:

- Coordinated "street outreach" helps connect the most vulnerable people in our community, those living outside or in their car, to housing.
- Emergency financial assistance helps people overcome one-time barriers and remain in their homes.



9.6%

Reduction in the point-in-time count of homeless individuals from 2018 to 2019.

200

Number of households street outreach verified as being literally homeless.

110

Number of households moved in to stable housing.

For the second year in a row the number of homeless people identified in the annual point-in-time count decreased. By identifying, verifying, and assessing people who are literally homeless, Street Outreach continues to play an essential role in helping Bucks County's homeless population find safe, affordable, and stable housing.



Timothy and Sally

Timothy and Sally are a sweet, older couple. Timothy is 65 and receives retirement benefits and Sally is 62 and on disability – her health condition limits her mobility and prevents her from climbing stairs. They didn't have much, but they were getting by. When the home they were renting was foreclosed on, they couldn't find another affordable and accessible rental and ended up homeless. To survive, they lived in their car and used the code blue shelter when it was open. Thanks to Street Outreach, they were referred to the Emergency Shelter, and within a month accepted into the rapid rehousing program. With the help of a housing locator, they found a suitable rental. Now, Tim and Sally are now stably housed and working with a stability coach who has connected them to other community supports.

United Way of Bucks County By the Numbers

100%

All of your contributions—
time, talent, and treasure—
stay here and directly benefit
programs in Bucks County.

and

Every program we fund
is focused on
sustainable change.

340,625

Pounds of produce
distributed through
Fresh Connect.

\$423,125

Dollars that Bucks County
families saved in 2018 on
prescription drugs by using
free FamilyWize cards
distributed by United Way.



United
Way



United Way
of Bucks County

1,187

Number of teens
helped through the
Holiday Gift
Card Drive.

\$146,385

Value of volunteer
time donated to
Bucks County
through
UW Bucks.

800

Number of girls who
attended the
#girlSTEM
conference.

\$117,950

Value of school supplies
distributed to kids in need
through Stuff the Bus.



United Way of Bucks County: Statement of Operations (pre-audit) For the Year Ended 12/31/18

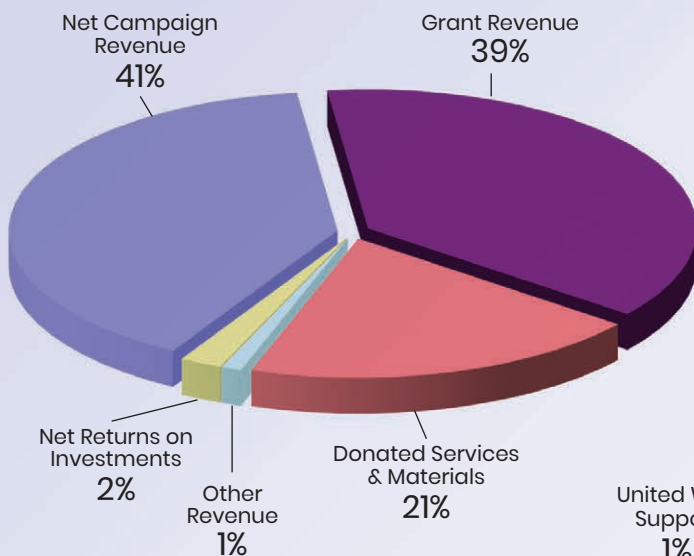
PUBLIC SUPPORT AND REVENUE

Net Campaign Revenue	
Gross Campaign	1,764,036
Less: Donor Directed Gifts	(58,294)
Less: Provision for Uncollectibles	(125,502)
Net Campaign Revenue	1,580,240
Grant Revenue	1,494,631
Donated Services & Materials	784,860
Other Revenue	39,595
Net Returns on Investments	(82,697)
Public Support and Revenue	3,816,629

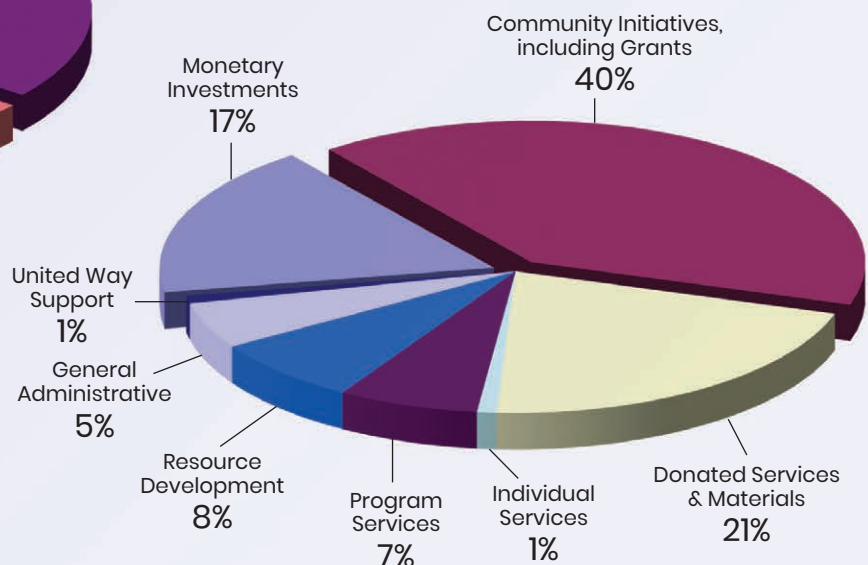
EXPENDITURES

Community Impact Expenses	
Distributions to Bucks County	708,506
Less: Donor Directed Gifts	(58,294)
Monetary Investments	650,212
Community Initiatives incl. Grants	1,499,909
Donated Services & Materials	785,600
Individual Services	35,043
Program Services	253,118
Full Investment in Bucks County	3,223,882
Resource Development	278,124
General & Administrative	196,908
United Way Support	31,899
Expenditures	3,730,813
Net Surplus	85,816

**Public Support & Revenues, By Source,
as a percentage of Total Revenue**



**Expenditures,
as a percentage of Total Expenditures**



United Way of Bucks County: Expenditures *made easy*

Each year, our Statement of Operations and Form 990 provide insight into what we raise and what we spend. They are important for transparency, but can be hard to interpret when they are just numbers on a page.

Our total and direct investment in Bucks County is over \$3.2 million. Here is a quick guide to our major expenditures in 2018:

\$650,000

(Monetary Investments):

This covers many programs in Bucks County, like **Fresh Connect**, our free, mobile farmer's market; **Street Outreach**, getting people who are literally homeless on the path home; **Emergency Needs**, for immediate help with rent, utilities, transportation, and necessities; along with other investments. The food distributed through **Bucks Knocks Out Hunger**, supplies distributed through **Stuff the Bus**, and **Holiday Gift Cards** for teens in need are also captured here.

\$58,000

(Donor Directed Gifts):

Locally and through the larger United Way network, we raise money that goes directly to nonprofits that make a local impact. These gifts are earmarked by the donor for a specific program or service.

\$1.5 million

(Community Expenditures, Including Grants):

This goes to **Pre-K Scholarships** for low- and moderate-income families. We invest heavily in this area because this is often a family's largest expense – and it is one of the best investments we can make. Children who get scholarships to attend our high-quality partner sites are prepared to succeed when they enter Kindergarten, giving them the best chance at long-term academic success. Plus, these scholarships mean that parents can get to work and provide for their family.

\$786,000

(Donated Services and Materials):

Our “donated materials” are almost entirely the value of **home goods**, which go to **families in need**. For example, families who are moving from the homeless shelter to a place of their own come “shop” for necessities with their case worker. They can get linens, kitchenware, and many other items. Thanks to our relationships with local retailers and a program called Good 360, all items are brand new (usually discontinued or open box returns).

\$35,000

(Individual Services):

We chair the local board and act as fiscal agent for the federally funded **Emergency Food and Shelter Program**. Each year, the amount available to nonprofits in Bucks County changes. We ensure that funds are distributed as quickly, fairly, and efficiently as possible.

\$253,000

(Program Expenses):

Any additional costs to run the programs that are directly related to our mission fall into this category. Our team focuses on **hunger relief** and improved nutrition; helping to ensure that **homelessness** in Bucks County is brief, rare, and non-recurring; improving the quality of – and access to – **early education**; and helping our nonprofit partners **coordinate services**, as needed. 🍌



WE ARE PLEASED TO SUPPORT THE UNITED WAY OF BUCKS COUNTY

FRIENDS. NEIGHBORS. COMMUNITIES.

For more than 125 years, the professionals at The Gormley Furlong Group have predicated our success on the success of our clients and the communities in which we live and work. Simply, we believe that as individuals, businesses and public entities come together, we reach common goals.

TIMOTHY P. GORMLEY, CFP®
Executive Vice President/Wealth Management

PAUL M. FURLONG
Executive Vice President/Wealth Management

KEVIN M. KEANE, AAMS®, AIF®
Vice President/Wealth Management

KATHLEEN M. ZELENKA
Vice President/Wealth Management



**GORMLEY FURLONG GROUP
OF JANNEY MONTGOMERY SCOTT LLC**
1010 Stony Hill Road, Suite 300, Yardley, PA 19067
www.gormleyfurlong.com

WWW.JANNEY.COM • © JANNEY MONTGOMERY SCOTT LLC • MEMBER: NYSE, FINRA, SIPC



United Way of Bucks County Funded Programs 2018

United Way of Bucks County invests in solutions that will foster sustainable change in our community.

2018 Investments were made in five key areas: Early Child Care and Education; Access to Benefits for Senior Citizens; Help with Emergency Needs; Hunger and Food Insecurity; and Housing and Homelessness.

The programs listed here represent some of the people and organizations who bring the passion, expertise, and resources needed to get things done. Together, we address the key issues that destabilize our community. We are extremely proud of the work being done which wouldn't be possible without our generous donors and volunteers.

Early Child Care and Education
Family Service Association and NOVA
Parents as Teachers and Nurturing Parenting with Trauma-Informed Counseling

Emergency Needs & Financial Stability
Family Service Association
Benefits Navigation for Seniors

Bucks County Opportunity Council
Emergency Services Program

Advocates for Homeless and Those in Need, Bucks County Opportunity Council, Family Service Association of Bucks County, Lily's Hope Foundation, Network of Victim Assistance, A Woman's Place
Emergency Needs Collaborative

Hunger and Food Insecurity
Bucks County Opportunity Council, Philabundance, Rolling Harvest Food Rescue, St. Mary Medical Center
Families Living Well Program
Fresh Connect

Housing and Homelessness
Bucks County Opportunity Council
Street Outreach

PHILABUNDANCE
Driving hunger from our communities



Morison Cogen LLP & Joseph Kistner | Proud to Support United Way of Bucks County



Proud to Support



United Way of Bucks County

Morison Cogen LLP has been advising businesses, individuals, and not-for-profit organizations globally for over 60 years. Our team can be an exceptional resource for you to rely on for your accounting needs. We're not just about the numbers. Our goal is to provide support, advice and guidance every step of the way as your business and your life evolves.

- Accounting & Auditing
- Financial & Estate Planning
- Information Technology & Support
- Domestic & International Tax Planning
- Litigation Support



267.440.3000 | 484 Norristown Rd., Ste. 100, Blue Bell, PA 19422 | www.morisoncogen.com

Proud Partner with United Way for Hunger-Relief



Connecting local farmers with Neighbors in Need



An accounting and business advisory firm serving the needs of individuals, corporations, not-for-profit organizations as well as municipal entities

We are pleased to also offer the consulting services of



Five Office Locations
www.bbco-cpa.com

215-343-2727
www.catalystnonprofit.com

Don't Sacrifice

Get the technology you need with the service you deserve from

THE First NATIONAL BANK
& TRUST CO. OF NEWTOWN

Mobile Payments | Online Banking & Billpayer
Mobile Banking & Deposit

12 Branches in Bucks County
215.860.9100 | www.fnbn.com



Experienced. Dedicated. Professional.
Your Full Service Law Firm

Langhorne
680 Middletown Boulevard
Langhorne, PA 19047
215-750-0110

New Hope
123 West Bridge Street
New Hope, PA 18938
215-862-0701

www.begleycarlin.com

Personal Attention.
Proven Results.

United Way of Bucks County

Member Agencies

United Way of Bucks County brings people together for the greater good. Our partners currently include dozens of nonprofit member agencies, hundreds of business partners, and countless community partners.

We are proud of our partnerships because getting things done in Bucks County is a team effort. We believe that the more perspectives you have, the more ways you can find to approach the issues that destabilize our community. That's why we bring together a diverse coalition of partners, using our collective energies to shape an agenda for change.

By rallying people around a shared sense of purpose, we can direct our time, efforts, and funds to the programs that best address local issues. We can direct our resources to where they will make the most difference.

We invite you to take a look at our partners – and know that every partner, business or agency, works together to make this a stronger, healthier community. These are the people who LIVE UNITED.

A Woman's Place	Children's Developmental Program, Inc.	Hands Holding Hearts	Quilts for Kids, Inc.
Advocates for the Homeless and Those in Need	The Children's Home Society of New Jersey	Legal Aid of Southeastern Pennsylvania Bucks County Division	Single Parent Fellowship
Aid for Friends	Credit Counseling Center	Libertae, Inc.	Twilight Wish Foundation
Aldie Foundation, Inc.	Emergency Relief Association	Lower Bucks Community Centers, Inc	Vita Education Services
Big Brothers Big Sisters of Bucks County	Family Service Association of Bucks County	Maternity Care Coalition	Welcoming the Stranger
Bucks Association for the Blind and Visually Impaired	The Faria Project	Network of Victim Assistance (NOVA)	Worthwhile Wear, Inc.
Bucks County Opportunity Council, Inc.	Good Friends, Inc.	Penndel Mental Health Center	YMCA of Bucks County
Bucks for Kids	Habitat for Humanity of Bucks County	Philadelphia Diaper Bank	YWCA Bucks County



*Community-Based Residential Treatment
Bridging Substance Abuse to Sustained Recovery*

*Member Agency and Proud Supporter of the
United Way of Bucks County*

(215) 736-2861 * Fax: (215) 736-1966
www.goodfriendsinc.org * E-mail: info@goodfriendsinc.org
PO Box 165 * 868 West Bridge Street * Morrisville, PA 19067
Facebook.com/GoodFriendsInc



Mark J. Milnazik President

4015 Bethlehem Pike, Telford, PA 18969
P 215.230.9221 F 215.933.6907
mmilnazik@jmbconsultants.com
www.jmbconsultants.com

THANK YOU

To Our Partner Companies & Organizations

5 Wits
A Woman's Place
Abbott Laboratories
Abbvie
Accenture
ACME Markets
Advertising Specialty Institute
Aetna US Health Care
Allstate Insurance Company
AmazonSmile Foundation
American Red Cross,
SE PA Chapter
American Water
AmeriHealth Caritas
Ametek, Inc.
Amica Companies Foundation
Antheil, Maslow & Macminn, LLP
Aon Affinity Insurance
Aqua America, Inc.
Arkema
ARRIS
Associated Production
Services
AT&T
Avery Dennison Corp (Fasson)
Bank of America
Barnes & Noble
BASF
Bay Sales
BB&T
Bee Bergvall & Co
Begley Carlin & Mandio, LLP
Believe in Your Power Life
Coaching
Beneficial Bank
Bensalem Township School
District
Big Brothers/Big Sisters of BC
Boeing Employees
Bon-Ton
Bristol Borough School District
Bristol Riverside Theater
Bristol Township Education

Support Professionals
Association
Bristol Township School District
Bristol-Myers Squibb
Brooks Instrument (ITW)
Buckingham Valley Vineyards
Buckingham Valley Vineyards
Bucks Child Care
Bucks County Community
College
Bucks County Community
College Alumni
Association
Bucks County Drug & Alcohol
Commission
Bucks County Housing Group
Bucks County Intermediate
Unit #22
Bucks County Opportunity
Council
Bucks County Quality Child
Care Coalition
Bucks County Technical High
School
C & S Wholesale Grocers
Campbell Soup Company
Carisma
Carroll Engineering
Corporation
Centenary Stage Company
Centennial School District
Central Bucks High School
West Student Activity Fund
Central Bucks School District
Ceridian
Child Care Information
Services of Bucks County
Children of America
Children's Developmental
Program
Childtowne, Inc.
Chipotle Mexican Grill
CIGNA

Citizens Bank
Classic Trophies, Inc.
CNG
Cobham
Combined Federal Campaign
Comcast Cable
CommScope, Inc.
Corporate Visions, Inc.
Costco
Cotton Company
Council of SE PA
Council Rock School District
County of Bucks
Covenant Bank
Crayola Experience
Credit Counseling Center
Cummins Sales and Service
Customers Bank
David Craig Jewelers
Delaware River Port Authority
Delaware Valley University
Deon Beverages
Detective Christopher Jones
Foundation, Inc.
Dominion Energy Charitable
Foundation
Dow Chemical
Doylestown Bookshop
Doylestown Democrats
Draeger Medical, Inc.
Dunmore Corp
Durham Deli, Inc.
Eat'n Park Hospitality Group
EDSI
Educational Testing Service
Enterprise Rent-A-Car
Equifax
Eternal Celebrations
Evonik Oil Additives USA, Inc.
Exxon Mobil Research &
Engineer
Family Service Association
Federal Express Corporation

First Bank
First Energy
First Friends, Inc.
First National Bank & Trust
Fred Beans Family of
Dealerships
Fulton Bank
Furia Rubel
GateHouse Media, Bucks
County Courier Times &
The Intelligencer
GE Foundation
Geiger
Geisinger Health System
Giant Food Stores, LLC
GlaxoSmithKline
GM Service Parts Operation
Go N Bananas Family Fun
Center
Good Friends, Inc.
Good Shepherd Church
Gormley Furlong Wealth
Advisory
Grace Episcopal Church
Grand View Hospital
Green Parrot
Guardian
H.B. Fuller
Habitat for Humanity of
Bucks County
Hanover Insurance
Harold Beck & Sons, Inc.
Harris Comfort
Harrisburg University of
Science and Technology
Harte Hanks
Health Strategies Group, Inc.
Hill Wallack, LLP
Holiday House Pet Resort &
Training Center
Home Depot
Hyman Korman Family
Foundation

IBM Corporation	McCafferty Auto Group	PICPA Foundation for Education & Research	St. Philips Episcopal Church
Incyte Corporation	McKnight Steel & Tube	Pitney Bowes	State Employees Combined Appeal
Independence Blue Cross	Meglio Pizzeria	PKF Mark III, Inc.	STD Associates, L.P.
Industrial Instruments & Supplies	Merck & Company, Inc.	Plumsteadville Inn	Suez Water Technologies & Solutions
Insaco Incorporated	Mercy Home Health	PNC Bank	Swamps Auto Works
Inspire	Microsoft	PNC Financial Services Group, Inc.	Synchrony Financial
Inverse Paradox	Middle Bucks Institute of Technology	PNL C&E Foundation	Target
Iron Will Strength & Fitness	Mom's Club of Southeastern Lower Bucks County	Ponderosa Pines Campground	Tatz Supplies LLC
ITW	Morison Cogen, LLP	PPL Corporation - Main Account	TD Charitable Foundation
IWCO Direct	Morrisville School District	Pratt & Whitney	TGSC
J.C. Penney Company, Inc.	NASC	Price Waterhouse Coopers	The Christmas Gala
James J. Dougherty Funeral Home	Nationwide Insurance Enterprise	Principal Financial Group	The Closeout Group
Janssen Pharmaceutical, Inc.	Neshaminy Pre-K Counts	Prudential Insurance Co.	The Grundy Foundation
JBT Corporation	Neshaminy School District	PSE&G	The Happy Mixer
JLL Community Connections	Network for Good	Publicis Touchpoint Solutions	The Thompson Organization
JMB Consultants, Inc.	Network of Victim Assistance	QNB	The Tubby Olive
John Kennedy Ford	New Jersey State Employees Charitable Campaign	Quaker Color	TIAA-CREF
Johnson & Johnson, Inc.	Nordson	Quakertown Community School District	Travelers
Johnson, Kendall & Johnson	Nordstrom	Ray Murray, Inc.	Turning Point
JP Morgan Chase & Co	Northampton Township	Reynolds American Foundation	U. S. Bank
JPM Partners, LLC	Order of Eastern Star, Inc. Neshaminy Chapter #374	RICOH USA, Inc.	UGI Utilities
Kampi Components Co., Inc.	O'Reilly Auto Parts	Rite Aid	United Health Group
Kellogg Company	Outreach, Inc.	Rocco's at the Brick	United Parcel Service
Key Bank Foundation	PA CareerLink Bucks County	Rodz Automotive Specialists	United States Recycling, Inc.
Knights of Columbus #4215 Council	Packer Marketing Associates	Rolling Harvest Food Rescue	United States Steel
KPMG	Painting with a Twist	Rostair Foundation	Univest Corporation of PA
Kramer Portraits	Palisades School District	Rotary Club of Doylestown	Upper Bucks Technical School
Krevitz & Associates Attorneys at Law	Parx Casino	Salem United Church of Christ	Vanguard Group
Laboratory Corp. of America	Pass Line Casino Parties	Santander Bank	Verizon Foundation
Langan Engineering & Environmental	PDQ Printing & Graphics	Sass, Moore and Associates, Inc.	Vita Education Services
Legal Aid of Southeastern PA	PECO	Savioni Designer Boutique	VWR Charitable Foundation
Leo & Peggy Pierce Family Foundation	Penn Color, Inc	Seer Interactive	Walgreens
Levittown News/Tobacco, Inc.	Penn Community Bank	Sesame Place	Wal-Mart
Lifespan Adult Day Health Center	Penn Environmental & Remediation	Shady Brook Farms	Warminster Fiberglass Co.
Lincoln Financial Group	PennEast Pipeline Company, LLC	Sheraton Bucks County	Waste Management of PA
Livengrin Foundation, Inc.	Pennridge School District	Sherman Engineering	WAWA
Lockheed Martin	Pennsbury School District	Shirley & Co	Wealth Advisory Services
Lower Bucks Community Centers	Pennsylvania American Water	Solvay	Wegmans Food Markets, Inc.
Lowe's	Pennsylvania Family Support Alliance	Southeast Regional Key at PHMC	Wells Fargo
M & C Specialties Co. (ITW)	Peter Benz Landscaping Inc.	SPAEnterprise	Williams
M & T Bank	Pfizer International	St. Luke's Quakertown Hospital	YMCA of Bucks County
Macy's	Philabundance	St. Mary Medical Center	Yum! Brands
Maternity Care Coalition	Picaboo	St. Mary Medical Center Spiritual Care Dept.	YWCA of Bucks County
			Zebra Striped Whale

THANK YOU

To Our Leadership Donors

United Way of Bucks County Leadership

Circles recognize and celebrate the vital importance of personal giving at exceptional levels. Members of our Leadership Circle are people of vision. Their community involvement creates solutions that shape tomorrow.

The Leadership Circle is comprised of local leaders and community philanthropists whose gifts of \$1,000 or more, impact the quality of life in our community.

Many leadership donors also volunteer and provide guidance throughout the year, help with United Way's affinity groups, and are tremendous influencers at workplace campaigns.

We are deeply grateful for their support, generosity, and the tremendous impact they make in our community.

**List based on donation records available at time of printing. Gift amounts include corporate matches when appropriate and represent gifts from either the 2017 or 2018 campaign years. We have made every effort to ensure the accuracy of this document. If an error or omission has occurred, please contact Matt Uhler at mattu@uwbucks.org*

Alexis de Tocqueville Society (\$10,000 and above)

Ms. Marissa Christie and Mr. Carl Saalbach
Alex and Patricia Gorsky
Neil and Renee Hall
Mr. and Mrs. Heiner Markhoff
Catherine C. McElroy
Mr. Stuart McGuigan
Ann C. Olson
Christopher Picariello
1 Anonymous Donor

William Penn Society (\$5,000 to \$9,999)

Mr. Albert Brown
Margaret Dubell
Ms. Karen Keefe
Mr. Fred Lamb
Mr. Werner Liebig Jr.
S. Melissa Maret
Mr. Murray McKinnon
Ms. Jessica & Mr. Kenneth T. Moore
Paul Mullen
Ms. Maria Perez
Mr. and Mrs. Mike Raphael
Mr. Kail C. Rion
Mr. James F. Samaha
Mr. Thomas Stanley
James F. Strunk Jr.
Ms. Rebecca Tillet
Jeane Vidoni
2 Anonymous Donors

Vanguard Level (\$2,500 to \$4,999)

Todd A. & Teresa C. Alderfer
Harold R Beck
Douglas Beck
Mr. Kevin Cassidy
Richard & Anne Coe
Michael Comprelli
Michael & Robin Connor
Mr. Anthony V. Cuomo
Dwight and Jeri Davis
Ms. Jennifer Dredge
Mr. Ron Dungan
Ms. Janice McCracken Erkes
Mr. Michael Farabaugh
Mr. Qiuwei Feng
Ms. Margaret Forrestel
John Griffin
Mr. Richard Hamilton
Ms. Anasuya Hazra
Mr. Christopher Herbine
Brian Jeter
Mr. Roy Kerney
Timothy and Pat Kiorpes
Paul D. Kuhn
Ms. Michelle Lynch
Mr. Neal Matheson
Ms. Jessica Miller

Mr. Dennis L. Myers
Ms. Faith Parkinson
Mr. Manohar Ravela
Ms. Geetika Ravela
Monika Rector
Mr. and Mrs. Harry Rose
Mr. Robert Rousseau
Mr. John Ruebush
Mr. Chris S. Scott
Jeffrey A. Siebold
Mr. John Tate
Mr. Paul Templeton
Mr. Timothy J. Tenhoeve
David Thomas
Mr. Andrew Tosti
Mr. Brian Wheeler
Governor Tom Wolf
Mark and Mimi Worthington
2 Anonymous Donors

Silver Level (\$1,500 to \$2,499)

Mr. Thomas Bartuska
Mr. John F. Bennett
Steven D. Boyd
Mr. Michael Boyle
Mr. Andrew Brackbill
Mr. Kevin Bradley
David A. Burton
Carl Coker
Mr. Brian T. Davies
Ellen Diorio
Kimberly DiPierro
Mr. Kenneth Fein
Gerald A. Feister
David & Arden Freeman
Mr. and Ms. C. Theodore Fritsch Jr.
Mr. and Mrs. Steve Gallucci
Ms. Carol Gerson
Mr. Robert T. Hanley
Ms. S.C. (Sandra) Hardy
Ms. Daphne Hayes
Ken & Lois Heitz
Mr. David Hendricks
Dorothy Jaworski
Mrs. Karen Johnson-Susko
Dennis and Ann Jones
Mr. David Kinsley
Christine McKee
Mr. Donald McMorris
Mr. Tomas Morales
Mr. Jason Nadler
The Novello Family
Mr. and Mrs. Brian Papsun
Mr. Timothy Philpot
Mr. Matt Piserchio
Mr. Douglas G. Placek
Mrs. and Mr. Claire Quinn
Mr. Joseph Rickers
Mr. Curtis Sawyer
Mr. David A. Schmel
Mr. Saad A. Shamsi

Mr. Rick A. Snyder
Susan F. Starr
Mr. Douglas A. Wharton
1 Anonymous Donor

Bronze Level (\$1,000 to \$1,499)

Mr. Jack Allison IV
Mr. Jeffrey Baab
Mr. Neal Babcock
Mr. Alexander Balagour
Dr. Steven M. Baxter
Ms. Michele Becci
Mr. Charles K. Booda III
Ms. Karen Boyd
David R. Breidinger
Mr. Kenneth Brown
Mr. Craig A. Bunce
Ms. Danielle Bush
Ms. Laura Cakolli
Mr. and Mrs. Robert Caruso
Mr. Robert Casselberry
Donna B. Cochran
Ms. Bridget C. Connell
Mrs. Renata Cortes
Patrick & Carol Counihan
Ms. Dinorah Craven
Mr. Russell Darling
Mr. Albert John DePalantino
Ms. Emily B. Diamond
Mr. Samuel Dugan
Mr. Alan Eckert
Mr. David E. Elkins
Mr. Walter Epp
Mrs. Maxine Epstein
Mr. James B. Erb
Mr. Ralph E. Exton
Mr. Roger T. Falloon Jr.
Mr. Charles Field
Ms. Janice Fongemie
Mr. Eric Franco
Ms. Julie Frantz
Mr. John Gabkee
Mr. Frank Gehringer
Mr. Shawn Gibson
David J. & Nancy Gondak
Dr. and Mrs. William J. Gretzula
Mr. and Mrs. Jamie Haddon
Mr. Joseph P. Halpin
Ms. Rachel Holler
John P. Holroyd
Mr. Robert A. Houck
Bruce and Marti Iacobucci
Mr. Chisoanya Ibegbu
Mr. James Kelly
Ms. Karen Kirchner
Mr. Michael Kitchko
Mr. Mark Klaiher
Mr. Jonathan Klass
Mr. Christopher J. Kleppinger
Mr. John Kochavatr
Mr. William P. Larkin Jr.
Mary Love

Ms. Mary Jane Maley
 Mr. Vince J. Mandes
 Ms. Colleen Matuszewski
 Anna Marie & William Mauro
 Mr. and Ms. Philip McAloon
 Mr. Patrick G. McCormick
 Ms. Kathleen McLearnon
 Mr. Curt B. Metzbower
 Mr. Keith R. Michael
 Mr. Matthew Mikulski
 Mr. Martin Moran
 Andrew J. Morey
 Mr. Ronald D. Myers
 Mr. James M. Nemecek
 Mr. Dennis Nolan
 Larry and Marilyn Nolt
 Ms. JoAnn Perotti
 Mr. and Mrs. Gary Plefka
 Mr. Ian M. Preddy
 Mr. Francis J. Purcell III
 Mrs. Sheri Ratner
 Ms. Ernestina Rodriguez
 Blair and Tamara Rush
 Mr. Bryan Sandmann
 Jennifer Schlosberg
 Ms. Stephanie Schwartzberg
 Ms. Jaclyn Sekula
 Mr. and Mrs. Bill Shoffler
 Robert F. Smith
 Ms. Natalie Solov
 Mr. Joseph Spadafore
 Mr. and Mrs. Scott D. Stover
 Ms. Sherri E. Strickler
 Matthew T. Sullivan
 Francis and Rosemary Sullivan
 Ms. Sybil Swanson
 Mr. Mark Thomas
 Mrs. Audrey Tucker and Mr.
 Tom Tucker
 Mr. Matt Uhler
 Edward Urankar
 Mr. Geo Varkey
 Ms. Catherine M. Villella
 Mr. John Walsh
 Mr. Derek P. B. Warden
 Mr. and Mrs. Seth Weber
 Mr. and Mrs. Richard K.
 Wizeman
 Mr. Michael O. Wood
 Mr. Paul Woods
 Mr. Ahmed Zahir
 4 Anonymous Donors

Emerging Leadership Donors (\$500 - \$999)

Ms. Olger Abarca
 Mrs. Joanne Allen
 Ms. Kimberly L. Arnold
 Mr. Brian Autenrieth
 Mr. Michael Ban
 Mr. Charles A. Bancroft
 Mr. William Barba
 Mrs. Connie L. Barna
 Ms. Shellie Barone
 Mrs. Jean Barrell
 Mr. Robert D. Beck
 Mr. F. William Belser Jr.
 Mr. Adrian D. Berger-Ettenson
 Mr. Richard Joseph Bertz
 Stephen A. Biddle
 Mr. Norman Bing
 Mr. Jason Boor

Ms. Charlotte Bothum
 Ms. Marlene Bower
 Mr. Brian Bowles
 Mr. Andrew Brandon
 Mr. Joseph Brogan Jr.
 Ms. Diane Brown
 Roanna Burnell
 Mr. Shawn Calafaty
 Mrs. MaryAnn Cardin
 Mr. Henry Carpenter
 Ms. Anne Cassidy
 Mr. Arthur P. Chin
 Ms. Theresa Christian
 Ms. Marian Cook
 Ms. Kelley A. Cwiklinski
 Ms. Jane L. Daveler
 Ms. Karen Dawkins
 Mr. Joseph A. DeFrancesco
 Mr. Eric Delisa
 Mr. Pasquale Deon
 Mr. Charles DePalma
 Ms. Nancy DiAngelo
 Ms. Darle J. Digney
 Ms. Nicole Dittmer
 Ms. Shirley Dix
 Mr. William Dubell
 Mr. David E. Earling
 Ms. Jennifer M. Ehresman
 Ms. Susan K. Elliott
 Ms. Donna Emhart
 Mr. Joseph Fabrizio
 Ms. Kathleen C. Fedorko
 Mr. Vicente Fernandez
 Ms. Cory R. Fosbenner
 Gary L. Fox
 Mr. Larry Funk
 Ms. Gail Gabor
 Mr. Dan Gana
 Ms. Antoinette Gellentien
 Mrs. Barbara J. Gerhard
 Mr. Namit Ghildyal
 Mr. Daniel Ginsberg
 Mrs. Diane L. Golrick
 Mr. David Goodrick
 Mr. Samuel Graham
 Mr. Lenny Greaney
 Mr. Timothy Grell
 Mr. Francis J. Grimes
 Mrs. Margaret Grubbs
 Mr. & Mrs. Donald Grubbs
 Mrs. Candida Guerrero
 Ms. Beverly Haberle
 Mr. Robert Hamilton
 Mr. and Ms. Kevin L. Hand
 Ms. Carolyne A. Hannan
 Mr. Richard P. Harman Jr.
 Mr. Robert Hendel
 Mr. Bruce Henderson
 Mr. Matthew Hochmiller
 Mr. A. David Horne
 Ms. Youiree G. Im
 Mr. Robert Immerman
 Mr. Robert B. Jackson
 Ms. Deborahlee H. Johnson
 Mr. Matthew Joniec
 Ms. Lucretia J. Joyce
 Mr. Peter Kelley
 Mrs. April & John Kenney
 Mr. Carl Kessler
 Mr. Ramo Kline
 Mr. Robert G. Kokstein
 Ms. Denise Kolber

Miss Lauren E. Kories
 Mr. Jason Kreitz
 Mrs. Karen Y. Krier
 Ms. Nancy Krulla
 Ms. Karen Kunin
 Mr. John Lamelza
 Mr. Richard Lamontagne
 Mrs. Anne Landis
 Mr. James E. Lasky
 Ms. Karen Lasorda
 Mr. Robert Latvis
 Mr. Christopher Lawler
 Mr. David Leder
 Mr. John Leski
 Mr. Hiram Levy II
 Mrs. Mary E. Liddle
 Mr. James Lipovsky
 Mr. William P. Liptrot
 Mr. John Lloyd
 Ms. Lauren A. Lowery
 Mr. Sandy Lowery
 Mr. Robert Lucot
 Mr. Kevin C. Maher
 Ms. Deborah Mahlstedt
 Mr. Christopher Main
 Mr. Christian Manna
 Mr. James McCann
 Ms. Carol McNiff
 Mr. Kenneth J. Meehan
 Mr. Michael A. Meenaghan
 Ms. Mary Melia
 Mr. Kenneth A. Meyers
 Mr. Michael Mezzasalma
 Ms. Hallie Micali
 Ms. Sharon Michael
 Ms. Pat Miiller
 Mr. Eric Mikkelsen
 Ms. Christine Miller
 Mr. Charles F. Miller
 Mr. Michael D. Miller
 Ms. Karen Millison
 Mr. Paul W. Minnichbach
 Mr. Scott D. Mittl
 Mr. John Modi
 Mr. Brendan Monaghan
 Ms. Jeanette A. Monaghan
 Mr. Justin Morris
 Mr. Stephen Murphy
 Ms. Karen Mwaniki
 Ms. Sheree Napoli
 Ms. Donna Nicholson
 Ms. Janet Northcott
 Samuel J. November
 Mr. Robert O'Brien
 Mr. Robert Opdyke
 Mr. Ronald Painter
 Ms. Stacy Pakula
 Mr. Andrew Park
 Ms. Janis Perez
 Dr. and Mrs. Stanley Plotkin
 Mr. Peter Ponzio
 Mr. Christopher Pulak
 Ms. Kimberly Ramagli
 Mr. Sadasivam Rangavajjala
 Ms. Karen Raspatello
 Mr. Robert Ratner
 Ms. Jessica Ratner
 Mr. Charles J. Reifsnieder
 Mr. Roger Ricklin
 Mr. Robert Robinson
 Ms. Janah Rodriguez
 Ms. Joy M. Rogoza

Mr. Geoffrey S. Roman
 Mr. Christopher
 Rosenfelt
 Mr. Paul Sacchetti
 Mr. David G. Sago
 Ms. Hara Salkovitz
 Mr. Brian K. Schaffer
 Mr. John R. Scheetz
 Mr. Gary Schiff
 Ms. Krista Schnitzler
 Mr. Thomas Schnitzler
 Ms. Christy Schorsch
 Mrs. Kerry Schulberger
 Mr. Douglas Shields
 Ms. Amy Shimp
 Ms. Kay Silberfeld
 Mr. Adam Silver
 Mr. and Mrs. A. Mercer
 Sisson
 Mr. Richard Slimmer
 Mrs. Terica Smiley
 Mr. Drew Smith
 Ms. Denise Smyler
 Ms. Joanne D. Snyder
 Ms. Jenifer Snyder
 Mr. Francis Soda
 Mr. Joseph Sokolofski
 Ms. Patricia A. Sovich
 Mr. John Stellato
 Mr. Steven R. Sterling
 Ms. Rebecca Stuart
 Ms. Jessica X. Su and
 Mr. Ping Cao
 Mr. Joseph Sullivan
 Mr. Richard Summer
 Mr. James Susko
 Ms. Jill Talarico
 Ms. Gina Thomas
 Ms. Terry L. Thomas
 Mrs. Margaret E. Thurber
 Ms. Kathleen Tiers
 Mr. Robert Trikur
 Mr. Charles Trinkle
 Alice & Robert Vernon
 Ms. Anne Walker
 Ms. Kristin M. Wall
 Carl and Margaret Wallnau
 Mr. Steve Waterson
 Mr. Jason Wehrung
 Mr. Steven A. Wells
 Ms. Dale Westwood
 Ms. Deborah Williams
 Ms. Lenora V. Williams
 Mr. Eugene Williams
 Ms. Margaret T. Wilson
 Ms. Theresa Wizemann
 Mrs. Mary S. Wodarski
 Mr. Scott Wolf
 Mr. James Zaccagnino
 Mrs. Stephanie Zajkowski
 Mr. Michael Zampirri
 Mr. Richard Zintner
 Mr. Stephen E. Zluky
 3 Anonymous Donors

**Parx Casino®
is Proud to Support
United Way of Bucks County!**



**parx
casino®**

What a night!

**Street Road Exit off I-95 or PA Turnpike
parxcasino.com**

GAMBLING PROBLEM? CALL 1-800-GAMBLER

CAMPAIGN AWARDS

Spirit of Bucks: Organizations

Each company or organization that contributes over \$10,000 per year to United Way of Bucks County earns the distinction of Spirit of Bucks. Contributions can come through any combination of employee giving, corporate gifts or matches, or sponsorships.

Through their generosity, they become the foundation of positive change.

Over \$100,000

Johnson & Johnson, Inc.
Penn Community Bank
Suez Water Technologies & Solutions

\$50,000 – \$99,999

Dow Chemical

\$25,000 – \$49,999

Bristol-Myers Squibb
Comcast Cable
ITW
Nationwide Insurance Enterprise
PECO
QNB
State Employees Combined Appeal
United Parcel Service
Wegmans Food Markets, Inc.

\$10,000 – \$24,999

Advertising Specialty Institute
Aon Affinity Insurance
Arkema
BB&T
Bucks County Community College
Cummins Sales and Service
Enterprise Rent-A-Car
Giant Food Stores
Harold Beck & Sons, Inc.
Neshaminy School District
Pennsbury School District
PPL Corporation
Target
TD Bank
United Way of Bucks County
Wells Fargo

ROBOTIC-ASSISTED KNEE REPLACEMENT SURGERY



**"I didn't skip
a beat!"**

MARJORIE | ALLENTOWN, PA

A catering company owner, Marjorie Monahan of Allentown spent her career on her feet. Then knee pain began to slow her down. She chose to have robotic-assisted knee replacement surgery at Grand View Health. She was back on her feet cooking for clients again in a matter of days.

Read Marjorie's full story and learn more about the procedure and the benefits at gvh.org/orthopaedics.

GVH GRAND VIEW HEALTH

CENTRAL BUCKS
CHAMBER OF COMMERCE INC.



JOIN TODAY!

take advantage of all that the Chamber
has to offer you and your business...



EVENTS

FREE Workshops & Seminars • Link at Lunches
Bucks County's **Premier** Business Card Exchanges
Business Breakfasts • Cultural Events • New Member Orientations



Stop in for a
conversation &
a cup of coffee!



Central Bucks Chamber of Commerce
Baillwick Office Campus, Suite 23 • 252 W. Swamp Road
Doylestown, PA 18901 • www.centralbuckschamber.com
215.348.3913 • info@centralbuckschamber.com

CAMPAIGN AWARDS

AGENCY PARTICIPATION

This award acknowledges nonprofit agencies that run an annual United Way campaign.

Big Brothers Big Sisters of Bucks County
Bucks County Housing Group
Bucks County Opportunity Council
Council of Southeast PA
Credit Counseling Center
Family Service Association
Good Friends, Inc.
Habitat for Humanity of Bucks County
United Way of Bucks County
Vita Education Services
YWCA of Bucks County

OUTSTANDING CAMPAIGN (multi-location)

This award acknowledges campaigns with multiple sites that make a substantial impact in both dollars and engagement.

Giant Food Stores
Nationwide Insurance Enterprise
QNB Bank
Penn Community Bank

REGIONAL CAMPAIGN EXCELLENCE

This award honors the campaign, run outside of Bucks County, which makes the greatest impact in our community.

Johnson & Johnson wins the award for Regional Campaign Excellence.

CAMPAIGN VOLUNTEER OF THE YEAR

The Campaign Volunteer of the Year award recognizes the year-round creative work of an individual or team in support of a United Way of Bucks County campaign. Winners use best practices, imaginative special events, and strong communication plans to get their colleagues involved.

Chris Stanley from Neshaminy School District is this year's Campaign Volunteer of the Year.

CAMPAIGN PACESETTERS AWARD

Pacesetter campaigns serve as an inspiration to others. They increase their annual campaigns 15% or more and have total giving above \$5,000 per year. Donations may come through employee giving, special events and fundraisers, corporate gifts, or a combination of these things.

Bucks County Community College
Cummins Sales and Service
Nationwide Insurance Enterprise
Neshaminy School District
Parx Casino
Penn Community Bank
PPL Corporation
SUEZ Water Technologies & Solutions
Target Stores
Wells Fargo

Pass Line Casino Parties

Complete Casino Party Entertainment Solutions

For More Information, Visit
passlinecasino.com



Perfect for Events of All Kinds!

Blackjack • Roulette • Craps • Texas Hold-em
Three Card Poker • Slot Machines • Poker
Mini-Baccarat

Contact us for your quote, **215-900-0680**

We make your party come alive!



CAMPAIGN AWARDS

CAMPAIGN OF THE YEAR

This award goes to the company that runs the best overall campaign, including a creative theme, special events, and unique communication and outreach plans. Campaign of the Year most typically goes to a group that drives employee support through both events and corporate gifts or matches.

SUEZ is being honored for having the Campaign of the Year.

LIVE UNITED AWARD

This award recognizes a group that shows what it means to Live United. They support the community by being generous with time, money, and resources. Award winners must engage and educate their team, run a United Way campaign, host special events, and invite colleagues to volunteer at one or more event during the year.

Penn Community Bank
Wegmans

TRAVELING TROPHY AWARDS

Traveling Trophies go to the campaigns that have the highest per capita giving ratios during their campaign. The Corporate Giving Trophy is calculated by including corporate gifts, matching gifts, and sponsorship gifts. The Employee Giving Trophy is calculated by including employee gifts and special event dollars raised by employees.

Corporate Giving: Business with More Than 100 Employees

SUEZ

Corporate Giving: Business with Less Than 100 Employees

ITW (M&C Specialties)

Employee Giving: Business with More Than 100 Employees

SUEZ

Employee Giving: Business with Less Than 100 Employees

ITW (M&C Specialties)



Working together is what Community Action is all about. The Bucks County Opportunity Council treasures the partnership we have with the United Way of Bucks County.



Our mission is to reduce poverty and partner with the community to promote economic self-sufficiency.



Together we are united in fighting homelessness, food insecurity, emergency needs for the most vulnerable of our neighbors.

COMMUNITY AWARD WINNERS

Impact Awards

Each year, United Way of Bucks County's Board of Directors and staff acknowledge some of the highest achievers in our community; the people and organizations who bring the passion, resources, and expertise to make great things happen.

All of our award winners show what it means to Live United. We are deeply grateful for their contributions.

Impact Awards celebrate the ways in which people come together for the greater good.

UNITED FOR EDUCATION

This award recognizes individuals or groups who have made a significant contribution to advancing high quality educational opportunities by sharing their time, their expertise, or their financial resources.

This year's winner is:

Mike Rainone and BB&T: Giving back is a cornerstone at BB&T. They support their communities through both financial commitments and volunteerism. BB&T has helped with education initiatives like Stuff the Bus, Bet on Success, #girlSTEM, and has provided support through the Educational Improvement Tax Credit. Mike Rainone has been a particularly strong advocate and supporter of UW Bucks education programs.

UNITED FOR FINANCIAL STABILITY

This award recognizes individuals or groups who have made a significant contribution to improving the financial stability of Bucks County residents by sharing their time, their expertise, or their financial resources.

This year's winner is:

Janssen Pharmaceuticals: Many Janssen employees have been long-time donors to UW Bucks.

Janssen has provided financial support for programs like the UW Bucks Emergency Needs fund, 2-1-1, and Fresh Connect. Their volunteers have helped with the annual gift card drive, Fresh Connect, and assembled welcome home bags. Support from Janssen has helped Bucks county residents connect to resources and has ensured that more of our neighbors in need are financially stable.

UNITED FOR HEALTH & WELLNESS

This award recognizes individuals or groups who have made a significant contribution to improving the health or wellness of Bucks County residents by sharing their time, their expertise, or their financial resources.

This year's winner is:

Eileen Swank. As a participant at Fresh Connect, Eileen has seen firsthand the personal and community benefits of having access to fresh produce. This past year Eileen spoke as an advocate for the program to anyone that would listen. She also has built a sense of community at Fresh Connect. In addition to sharing recipes with other participants, she provides encouragement to younger women and gives them cooking advice and tips.

COMMUNITY AWARD WINNERS

Impact Awards

UNITED FOR IMPACT

This award honors individuals or groups who help build a stronger community by contributing to more than one of the interdependent areas of education, health and wellness, and financial stability. Typically, winners in this category work in concert and with many partners, sharing their time, their expertise, or their financial resources.

This year's winner is:

The team at **SUEZ**. For years, SUEZ has run a first in class United Way workplace campaign. It is always one of the most exciting, fun, and financially successful workplace campaigns in Bucks County. Their support of UW Bucks doesn't end there. In 2018, SUEZ hosted Leaders United, encouraged employees to join the Emerging Leaders group, funded and packed spice kits for Fresh connect, volunteered at Fresh Connect, sponsored and volunteered at BKO Hunger, packed hygiene kits, and assembled STEM kits. SUEZ's commitment to Bucks County shines through in everything they do.

WE ARE PROUD TO **LIVE UNITED!**



Family Service is a nonprofit social service organization with locations throughout Bucks County. Our mission is to listen, care and help. Every day.

Learn more at www.fsabc.org.

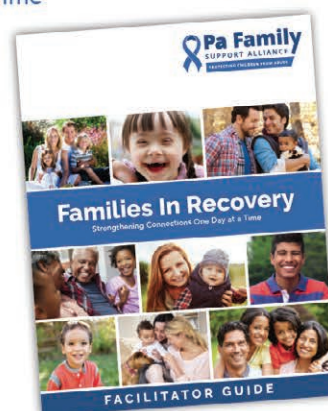


Families In Recovery

Strengthening Connections One Day at a Time

PA Family Support Alliance developed the *Families in Recovery* program to provide support and education to families, parents, and children who have been touched by addiction and are living in recovery.

This comprehensive experiential and educational program attends to a variety of challenges and experiences common to parents in recovery, including: identifying strengths, needs, and resiliencies; exploring healthy parenting in balance with recovery needs; understanding the person-focused and family-centered change process; promoting healthy parenting and communication styles; developing healthy coping skills and modeling self-care; coping with guilt, shame, and stigma; and developing a personalized family blueprint for overall wellness.



TO GET STARTED, CONTACT

Kayla Kressler, MA • Director of Prevention Programs
717.238.0937 • KKressler@pa-fsa.org

2000 Linglestown Road | Suite 301 | Harrisburg, PA 17110 | www.pa-fsa.org | [ProtectPAKids](#) | [PAFamilySupport](#)

For a community to thrive, we all must do our part.

Thank you to the United Way of Bucks County for working to make sure there is food on tables, money in pockets, children in classrooms and roofs over heads.

The Bucks County Courier Times and The Intelligencer are working to do our part too. **We promise to be your truth seeker, your light shiner and your celebration multiplier.** It's why we are so proud of the work we do on topics like the safety of your drinking water and the epidemic of opioid abuse.

Knowledge is the power that drives a community to solve problems and achieve its collective potential.

We're proud to be your partner.

BUCKS COUNTY
Courier Times
CourierTimes.com

The Intelligencer
TheIntell.com



THANK YOU

To our 2019 Annual Breakfast & Bucks United Magazine Sponsors

Diamond

Suez Water Technologies
& Solutions

Platinum

First Bank

Gold

BB&T
Bucks County Courier
Times
Hill Wallack, LLP
Parx Casino
PECO
Penn Community Bank
QNB Bank
Wegmans
WSFS Bank

Silver

Bee, Bergvall & Co.
Begley, Carlin & Mandio
Bennett C. Photography
Bucks County Housing Group
Bucks County
Opportunity Council
Central Bucks Chamber of Commerce
Comcast
Enterprise Rent-A-Car
Family Service Association
First National Bank & Trust of Newtown
Good Friends, Inc.
Gormley Furlong Wealth Advisory Group
Grandview Hospital
Habitat for Humanity
Harris Comfort
JMB Consultants, Inc.

Morison Cogen
Pass Line Casino Parties
Pennsylvania Family Support
Alliance
Quality Childcare Coalition
Rolling Harvest Food Rescue
State Representative Tina Davis
The Outreach Program
Wealth Advisory Services



WEALTH ADVISORY
SERVICES

STRENGTH AND INDEPENDENCE

MICHAEL SHEEHY, CFP®, AIF®
Financial Advisor

18 East Court Street, Suite 100 // Doylestown, PA 18901
215.340.3690
wealthadvisoryservices.com

Securities offered through Raymond James Financial Services, Inc., member FINRA/SIPC. Investment Advisory Services offered through Raymond James Financial Services Advisors, Inc. and Wealth Advisory Services. Wealth Advisory Services is not a registered broker/dealer, and is independent of Raymond James Financial Services. Certified Financial Planner Board of Standards Inc. owns the certification marks CFP®, CERTIFIED FINANCIAL PLANNER™, CFP® and AIF® in the U.S., which it awards to individuals who successfully complete CFP Board's initial and ongoing certification requirements.

Tina Davis

State Representative - 14th District

4530 New Falls Road
Levittown, PA 19056
267-580-2660
RepDavis@pahouse.net



*Thank you to the United Way
of Bucks County for continuing
to make our community stronger.*

Paid for by Friends of Tina Davis



Bucks County

Quality Child Care Coalition
for Early Care and Education

*Working to enhance the quality of
early childhood programs in Bucks County*

**QCCC is proud to partner with
United Way of Bucks County Success by 6
and PA Pre-K Counts Grantees**

To learn more: www.BucksQCCC.org



facebook.com/QCCCBucks



twitter.com/QCCCBucks



**Call Today for a Free
In-Home Consultation,
Service, Fuel Oil,
or Propane
Delivery**

We work hard to ensure your complete satisfaction, whether we're delivering quality fuel oil and propane, making a service call, or installing new air conditioners, furnaces, boilers, mini splits, generators or any new equipment.

That's why many of our customers have been with us for **OVER 50 YEARS!**

75 Years in Business	7 Days a Week
24 Hour Emergency Service	4 Generations
40 Service & Installation Vehicles	3 Harris Owners

HARRIS
"Comfort Year Round"

Heating • Air Conditioning • Fuel Oil • Propane • Gas • Generators

Still Family, Still Local.

PA LIC-22 • NJ: 13VH06306900

NEWTOWN
215-968-7477
P.O. Box 506
Newtown, PA 18940

BRISTOL
215-788-4596
206 Otter Street
Bristol, PA 19007

www.HarrisComfort.com

great stuff.



great prices.



great cause.



Habitat for Humanity®

ReStore®

Shop the store that helps Habitat for Humanity build strength, stability and self-reliance through shelter in your community and around the world.

habitatbucks.org/ReStore

(215) 822-2708

**Proud supporter of
United Way of Bucks County**



PennCommunityBank.com

215-788-1234



Member
FDIC



Banking | Lending | Insurance | Investments



**SUEZ is proud to support
our communities through
the United Way.**

