

2011 Annual Report & Awards Program

April 27, 2012

United Way
of Bucks County



Celebrating 60 Years



GE Power & Water
Water & Process Technologies

GE is a long supporter of the
United Way and extends
its sincere thanks
for all you do in the
community.



imagination at work

Board of Directors 2011

EXECUTIVE COMMITTEE

Board Chair

Lynn T. Bush
Bucks County Planning Commission

Board Chair-Elect

Trish Markel
Team Capital Bank

Vice Chair, Resource Development

Bruce Iacobucci
First Federal of Bucks County

Vice Chair, Community Impact

Anna Marie Mauro
Community Representative

Treasurer

Mike Connor
Bucks County Bank

Corporate Secretary

Francis Sullivan, Esq.
Hill Wallack, LLP

Immediate Past Chair

James J. Dowling
Retired, Ethan Allen

Personnel Committee

Richard O. Coe
Kids Voting

Governance Committee

Francine Block
American College Admissions Consultants

At Large Member

David J. Gondak
Strategic Source, Inc.

DIRECTORS

Michael D. Bannon, Department of Consumer Protection
Weights and Measures

Patricia M. Boyle, United Food and Commercial Workers
Local #1776

Ron Davis, Parx Casino

Lynn Doyle, Comcast

Blaine Forkell, Wegmans Food Markets

Barry Galasso, Bucks County Intermediate Unit #22

Steve Gallucci, Wegman's Food Markets

William Gretzula, Bensalem School District

Brian Jeter, Comcast Cable

Glynn Key, GE Water & Process Technologies

Sang Kim, Wells Fargo

Doreen Masalta, PECO

Sonny Parikh, Community Representative

Nathan Smedley, Independence Wealth Management

Pat Walker, Calkins Media

John Wilson, Johnson & Johnson

HONORARY LIFE MEMBERS

Jacqueline Bowers

Dr. Gary L. Bowman

Kathy Brett

Karen Dawkins

J. Peter Dominick

Thomas P. Donnelly, Esq.

Grover Friend

Jack McCaughan

Harold Oswald, Jr.

Samuel M. Snipes, Esq.

Carl Wallnau, Esq.

Mark Worthington

Executive Committee 2012

Patricia Markel-Mulligan, Board Chair

Lynn Bush - Immediate Past Chair

Frank Sullivan - Corporate Secretary

Michael Connor - Treasurer

Anna Marie Mauro - Vice Co-Chair Community Impact

William Gretzula - Vice Co-Chair Community Impact

John Wilson - Vice Co-Chair Resource Development

Bruce Iacobucci - Vice Co-Chair Resource Development

Brian Jeter - Chair Marketing Committee

Francine Block - Chair Governance Committee

Ron Davis - Chair Personnel Committee

INTRODUCTION OF NEW BOARD MEMBERS

Terms Beginning 4/27/2012

Robert Caruso
Sesame Place

Christine Gallagher
Enterprise

Samuel Lee
Bristol Township School District

Catherine McElroy
Bucks County Community College

David Freeman
QNB



United Way
of Bucks County

RETURNING BOARD MEMBERS 2012 FOR SECOND TERM

Steve Gallucci - Wegmans

Brian Jeter - Comcast

Glynn Key - GE Water & Process Technologies

Trish Markel - Team Capital

Pat Walker - Courier/Intelligencer

RETURNING BOARD MEMBERS FOR ONE YEAR TERM

Anna Marie Mauro

Patricia Boyle

A MESSAGE FROM OUR PRESIDENT AND CEO



I am delighted to join the outstanding volunteers, board leaders and wonderful staff of the United Way of Bucks County. As a Bucks Countian and non-profit leader for over 20 years, I am proud that our local United Way is made up of people who want to make a real difference in our neighborhoods. We are fortunate that Bucks County is so abundant in resources and our generous neighbors give where they live so that we can solve our challenges in the areas of Health, Education and Income together.

Additional attributes that lead to my excitement are:

- Partnerships with over 40 top tier non-profit organizations through 54 life changing programs
- Opportunities to make positive change and be part of leading edge work in conjunction with business, labor, government, and community organizations
- A diverse and inclusive program that strives to reflect our community
- A well-earned reputation for accountability, trust, transparency and integrity
- In working toward our mission, together we have the capacity to make a lasting impact across our community to meet urgent human needs and improve social conditions by mobilizing the community's volunteer and financial resources in a common cause of caring — we are reminded that it's up to all of us to help create opportunities for a better life for everyone in Bucks County.

Jamie Haddon, M.S.

President and CEO

United Way of Bucks County

SPIRIT OF BUCKS COMPANIES



Companies and their employees donating over \$10,000 on an annual basis earn the distinction of Spirit of Bucks. They are the bedrock upon which a strong community is built.

\$300,000 and Above

Johnson & Johnson

\$100,000 to \$299,999

GE Water & Process Technologies

\$50,000 to \$99,999

Charming Shoppes
Dow Chemical Company
First Federal of Bucks County
Giant Food Stores
Merck & Company
PECO
The Grundy Foundation
United Parcel Service

\$25,000 to \$49,999

Bristol-Myers Squibb
Comcast Cable
Enterprise Rent-A-Car
Harold Beck & Sons
ITW (M & C Specialties)
Lockheed Martin
Macy's
Milton Roy Company
Nationwide Insurance
Neshaminy School District
Wegmans Food Markets

\$15,000 to \$24,999

AON/Affinity Insurance Services
Bank of America
Bucks County Community College
Combined Federal Campaign
Council Rock School District
Federal Expresss
Greater Philadelphia Media
Bucks County Courier Times/The Intelligencer
IBM Corporation
National Penn
Penn Color
Pennsbury School District
QNB
TD Bank
United States Steel
Wells Fargo

\$10,000 to \$14,999

Advertising Specialty Institute
AETNA
AT&T
Bensalem School District
County of Bucks
Draeger Medical
Glaxosmithkline
PNC Bank
Sesame Place
St. Mary Medical Center
Susquehanna Bancshares, Inc.
Target Stores
United Way of Bucks County

COMMUNITY AWARD WINNERS

Partnership Awards

COMMUNITY ENGAGEMENT

Advertising Specialty Institute
Barnes & Noble
hgregg
EnForm Graphic Productions
McCaffrey's

LIVE UNITED AWARD

Johnson & Johnson

COMMUNITY PARTNER

BUILDING FUTURES AWARD

Bristol Borough AOC Fundraising Committee

CARING FOR KIDS AWARD

Charming Shoppes

COMMUNITY CHAMPION AWARD

Comcast Cable

HELPING HAND AWARD

Lockheed Martin Space Systems

YOUTH ENGAGEMENT

Operation Helping Hand Award

Klinger Middle School, Centennial School District

MARTIN LUTHER KING DAY OF SERVICE ESSAY CONTEST

Gigi Northrop

Bristol Borough High School, Bristol Borough School District

Kristina Posner

Holicong Middle School, Central Bucks School District

Matthew Eissler

M.M. Seylar Elementary School, Pennridge School District

Diya Cherian

Manor Elementary School, Pennsbury School District

YOUTH ENGAGEMENT - LIVING UNITED

Jordan Stokes - Holicong Middle School,

Central Bucks School District

Pennsbury LYFT Awareness Teen Advisory Group

QUOTES FROM MARTIN LUTHER KING DAY OF SERVICE ESSAY CONTEST WINNERS

"Without volunteers, my life would be very empty. Everything I do depends on the help of volunteers. The volunteers in my life are very important to me because they are taking their own personal time to help me, instead of doing something else. They give part of their life just to help me and others. Every activity in my life happens because of the help of volunteers."

Matthew Eissler, 5th Grade

"I do something to help someone, and someone else gets inspired, it keeps spreading: like ripples. Precisely! Volunteering is important because it can benefit both the community and the volunteer. When someone donates their time it can make a tremendous difference and it gives hope to those who need it. There are a lot of people who aren't as lucky as you are."

Diya Cherian, 4th Grade

Bernard Meltzer once said "There is no better exercise for your heart, than reaching down and helping to lift someone up." This quote means that there's nothing better than helping others and volunteering. I feel that people need to volunteer because it gives you a chance to help others, get an understanding of what others are going through, and improve the community. "On any given day it's estimated that 750,000 men, women, and children are homeless in the US, so it is up to us to volunteer in soup kitchens, homeless shelters, and events for the less-fortunate".

Kristina Posner, 8th Grade

"Volunteering is not a chore and should not be seen as such. Volunteering can sometimes take a lot of time and effort but it is worth it in the end. Knowing that you helped someone in need, whether it be plant, animal, or person is a satisfying feeling. Volunteering is definitely something you can take pride in. What are you doing for others? Don't answer this question with words. Your actions on Martin Luther King Jr. day of service will be answer enough, since actions speak louder than words. Choose your actions wisely and remember no good deed goes unnoticed".

Gigi Northrop, 12th Grade

Campaign Awards

100% AGENCY PARTICIPATION

Aldie Counseling Center
A Woman's Place
Child, Home & Community
Children's Developmental Program
CONTACT Greater Philadelphia
Credit Counseling Center
Good Friends
Legal Aid of Southeastern PA
Libertae
United Way of Bucks County
Vita Education Services
YWCA Bucks County

REGIONAL CAMPAIGN EXCELLENCE

Enterprise Rent-A-Car

PUBLIC SECTOR CAMPAIGN EXCELLENCE

Neshaminy School District

CORPORATE CAMPAIGN EXCELLENCE

GE Water & Process Technologies

BEST NEW CAMPAIGN

Draeger Medical

MOST IMPROVED CAMPAIGN

QNB

OUTSTANDING CAMPAIGN/MULTI-LOCATION

GIANT Food Stores

CAMPAIGN BEST PRACTICES

AON Affinity

CORPORATE MATCH \$1 FOR \$1

Begley, Carlin & Mandio
Bristol-Myers Squibb
First Federal of Bucks County
Harold Beck & Sons
Insaco
ITW (M&C Specialties)
Merck & Company
Nationwide Insurance

15% CIRCLE AWARD

Begley, Carlin & Mandio
Bristol Township School District
Centennial School District
Central Bucks School District
National Penn
PECO
Pennridge School District
UPS Freight

Traveling Trophy Awards

Highest per capita giving ratios in the 2011 campaign.

Corporate Giving

Over 100 Employees

First Federal of Bucks County

Under 100 Employees

ITW (M&C Specialties)

Employee Giving

Over 100 Employees

First Federal of Bucks County

Under 100 Employees

ITW (M&C Specialties)

UNITED WAY ALEXIS de TOCQUEVILLE SOCIETY

Heiner Markhoff, President & CEO
GE Water & Process Technologies



“When an American asks for the cooperation of his fellow citizens, it is seldom refused; and I have often seen it afforded spontaneously, and with great good will.”

—Alexis de Tocqueville

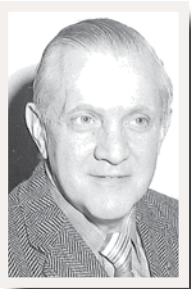


Heiner Markhoff



Dr. Stanton Kelton Award—Michael B. Connor

This long standing award was developed to recognize an individual member of the United Way of Bucks County’s Board of Directors who has made a significant contribution over the past year to the goals of the United Way of Bucks County and its mission in our community. This award honors the memory of Dr. Kelton, a compassionate and generous board member from 1966 to 1993, who was dedicated to the betterment of this community.



Paul Sauerbry Award—Francine E. Block

This prestigious award is in honor of Paul Sauerbry, President of United Way of Bucks County from 1964 to 1974. The award is given annually to a volunteer who, over an extended period of time, has embodied Sauerbry’s commitment to the community through innovative leadership, stimulus for volunteer action by others, courage to overcome obstacles, and dedication and creativity in the development of programs to meet community needs.



*Photo was provided by Lynn Goodwin,
Photos by Lynn*

Thank you to the following companies for sponsoring the Annual Meeting and Awards Breakfast:

**First Federal of Bucks County
GE Water & Process Technologies
Giant Food Stores
Parx Casino
PECO Energy
Stifel Nicholas
Team Capital Bank
Wegmans**

Making an Impact in Bucks County

United Way of Bucks County has been mobilizing a variety of resources in the communities—through people, time, talent, relationships, expertise, technology and financial support—to create lasting changes in community conditions that improve the lives of the residents of Bucks County. The following is a snapshot of how UWBC adds value through a variety of community impact strategies:



*Girls Rule,
Bristol Borough 21st CCLC*



Children receive school supplies from “Stuff the Bus Campaign”

EDUCATION – Early Childhood & Youth Development

Early Childhood & Youth Development – Community Investments to Partner Agencies of \$412,500 to help children and youth achieve their potential through 21 programs provided by 16 agencies that support quality child care, school readiness, and academic completion. These programs provide safe places and caring adults for young children and school-age youth to support families.

Pre-K Counts - \$312,900 per year – this is the fifth year of the program for the Commonwealth of Pennsylvania through the Office of Child Development and Early Learning. This grant provides Quality Pre-Kindergarten education for 62 children throughout the County and professional development/education for teachers to ensure quality education for the children. UWBC serves as the lead agency (grant holder) for the 4 Pre-K Centers that participate in this program.

21st Century Learning Center Grant (Cohort 5) - \$1,380,000 over 3 years to provide after school and summer, academic and cultural enrichment opportunities for grades 6-12 in partnership with the Bristol Borough School District. (Cohort 6) - \$1,260,000 over 3 years to provide after school academic enrichment opportunities primarily for grades 4-6 in partnership with the Bristol Borough School District.

Success By 6 – is part of the largest network of early childhood coalitions in the country. With 39,000 children in Bucks County under the age of six, our volunteers are working on projects in 4 key areas: 1) Quality Early Care and Education 2) Literacy 3) Parenting and 4) Healthy From the Start to make sure that these children are ready to learn when they enter school.

Born Learning – Distribution county-wide to parents and caregivers to create early learning opportunities for young children. These materials include “KidBasics” and “Your Child @ ...” series in both English and Spanish. We focus on “Everyday Moments Being Teachable Moments.” Currently, we are planning the establishment of “Born Learning Trails” throughout the County.

Children’s Trust Fund – Strong Families, Safe Children Grant of \$40,000 for 3 years (we are currently in Year 2)- to provide coaching/mentoring for family child care professionals regarding identifying and reporting potential child abuse and neglect.

EDUCATION (continued)

LYFT – Drug Free Communities Grant - \$125,000 per year for up to 5 years (we are in year 2 of a second cycle) of this program that works with the Pennsbury School District through a community coalition to support efforts to minimize risk-taking behavior and maximize access to prevention education opportunities and resources to assist youth and families.

LYFT – SPF-SIG (Strategic Prevention Framework – State Incentive Grant) – Approximately \$25,000 per year for 4 years- In collaboration with The Council of Southeast Pennsylvania, Inc., the Pennsbury LYFT program has received funding, support services, and programs focused on reducing underage drinking.

School Readiness Materials - Created a “Children Learn Through Play” card to support parents in preparing their children for school and distributed “Kindergarten Here I Come” and “Learning is Everywhere” calendars with fun educational transition activities by month. These projects are collaborative efforts with the Quality Child Care Coalition and Pre-K Counts.

Early Childhood Education Trainings - We support financially and with technical assistance, trainings for early childhood professionals which include: KidWriting, Tender Bridges, etc, in collaboration with other organizations that support quality early childhood education.

Community Resource Guide for Young Children & Families – Prepared an updated version of this directory (Who to Call in Bucks County) that provides information and phone numbers (including hotlines) that are important to families and children. This guide is done in collaboration with the BCIU # 22 and the Quality Child Care Coalition.

Ready Reader – Achieving Success By 6 – through a grant from the Wells Fargo- Wachovia Foundation of \$10,000 for 1 year, we have created a Family Literacy Kit and distributed it to parents of preschoolers throughout the county with presentations by Success By 6 volunteers on how families can use this kit to share the love of reading with their children.

Book Drives – Success By 6 was the recipient for the 5th year of the annual Barnes & Noble holiday book drive. Over 5,000 books were purchased by generous shoppers who gave these children’s books for distribution to child care centers and preschools throughout the county.



Pennsbury LYFT

Making an Impact in Bucks County

INCOME – Financial Stability/Self-Sufficiency

Income – Financial Stability Community Investments of \$280,000 to promote financial stability and independence through 15 programs and 10 agencies that support job skills, affordable housing, and skills for increased savings, financial assets and long term stability.

Emergency Food and Shelter Program – Through funding from the Federal Emergency Management Agency, UWBC administers this program that brought \$39,007 this year to the community in support of emergency shelter.

Gifts In-Kind – Through a network of stores and businesses throughout the area, we receive donations with an average annual value over \$250,000 of goods for distribution to our partner agencies throughout the County. These items include bedding, clothing, furniture, toys, housewares, etc., for use by the agencies or their clients.

In-Kind Donations - In 2011, the business community and generous residents of Bucks County donated over \$300,000 worth of donations. They have donated items such as coats, office furniture, sofas , TVs and wheelchairs. These items are given to our agencies to use or be used by their clients.

Santa's Helpers - Program started to meet the overwhelming need for toys in the lower portion of Bucks County. We asked for help from the community and received an incredible amount of support. Santa's Helpers provided over \$25,000 worth of toys to children who otherwise would not have had toys for Christmas in Bucks County.



Jordan Stokes and Soccer Team collect toys for Santa's Helpers



Operation Helping Hand – An annual food drive that is run through United Way in collaboration with the schools (both public and private) to collect food on one day each year in March, and was expanded this year to include the business community. This collection brought in 57,150 lbs. of food in 2011, which was distributed to food pantries throughout the county.

Tax Prep & EITC - On-site Tax Preparation – linkage on our website for tax preparation for anyone making less than \$52,000 per year, to complete and file their tax returns free of charge. These programs focus on capturing the Earned Income Tax Credit to benefit families in Bucks County.

HEALTH – Healthy Communities

Health – Healthy Community Investments of \$450,000 to promote health services, access to healthcare, violence prevention education, and coordination of services through 16 programs provided by 12 agencies.

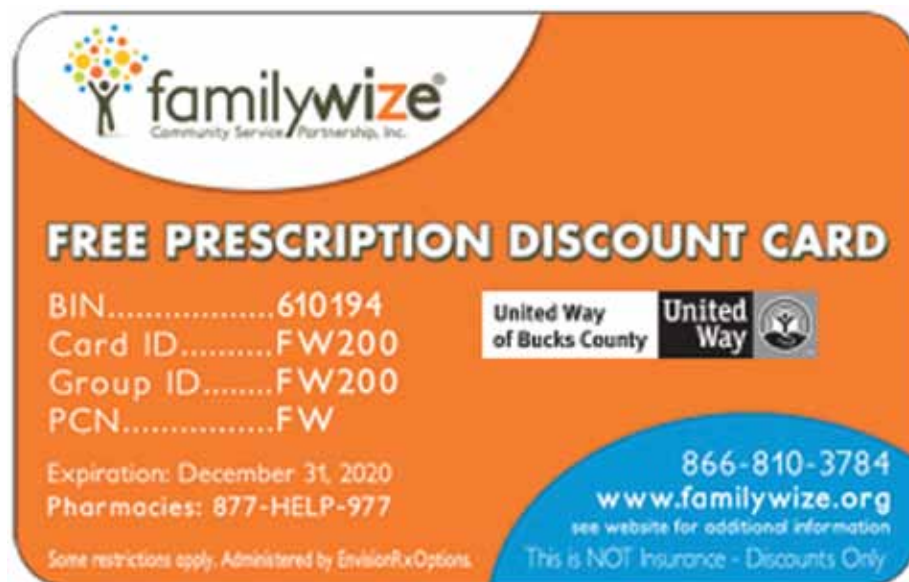
First Call For Help – A local phone Information and Referral service run through United Way of Bucks County in collaboration with Contact of Greater Philadelphia for people in the community to connect to agencies, for emergency assistance, and referral for services.

Connections – Human Resource Directory - Also known as “The Red Book” – UWBC compiles this comprehensive listing of a variety of human services (both private and public) which are available to people in our community. This directory is also available on-line at www.uwbucks.org.



UWBC acknowledged by Familywise for saving over \$1 Million in prescription costs

Familywise Prescription Assistance Program – UWBC distributes prescription discount cards throughout the county for use by people who do not have prescription coverage or for a drug that is not covered. In 2011, 14,665 claims were made and \$288,832 was saved by the residents of Bucks County on their medications.



Member Agency Community Investment

People need help all over, and United Way strives to impact every area of Upper, Central and Lower Bucks County. We listen to our community. Residents tell us what they consider to be their most critical issues and, ultimately, help our volunteers determine which programs need funding. Our member agencies then partner with us to provide services in all of these areas.

A complete listing of programs United Way funds at our Member Agencies is included below:

A Woman's Place

Counseling Programs

Aldie Counseling Center

Outpatient Services

American Red Cross SEPA Chapter

Emergency Services

BARC

JOBS - Employment Training & Placement,
Developmentally Disabled

Big Brothers/Big Sisters

School Mentoring Program
Community Bridge Mentoring Program
High School Bigs Mentoring Program

Boy Scouts of America Bucks County Council

Scout Reach

The Council of Southeast of Pennsylvania, Inc.

Substance Abuse Prevention and Intervention
for Youth

Bucks County Headstart

Summer Enrichment Program

Bucks County Housing Group

Financial & Housing Counseling Program

Bucks County Opportunity Council

Economic Self-Sufficiency Program
Prevention Stabilization Program
Emergency Services

Child, Home & Community

Adolescent Parenting & Career
Development Program

Children's Developmental Program

Family Support Program

CONTACT Bucks County

Crisis & Help Lines
Reassurance Contact

Credit Counseling Center

Mortgage Foreclosure Mitigation

Family Service Association

Behavioral Health
Early Childhood Services
Drive to Success
Teen Center
HIV/AIDS Case Management
Bucks County Emergency Homeless Shelter

Galilee Pavilion

Soup's On
Basic Aide Program

Girls Scouts of Eastern PA

Girl Scout Youth Leadership Development Program

Good Friends, Inc.

Halfway House for Men

JustCommunity, Inc.

Positive Social Norms Project

Legal Aid of Southeastern PA

Employment & Bankruptcy Program
Protection from Abuse Pro Bono Program

Libertae

Family House
Halfway House for Women

Lifespan Adult Day Center

Adult Day Care/Senior Support
Services

Lower Bucks Community Center

Scholarship/Family Support Program

Lower Bucks Family Y

Special Needs & At Risk Early Childhood
School Age Special Needs - At Risk Youth Care

Network of Victim Assistance

Education Prevention
Direct Services to Victims of Crimes & Violence

The Peace Center

Project Peace in Schools

TODAY, Inc.

The Incredible Years
Bucks Promise for Youth and Communities

Upper Bucks Y

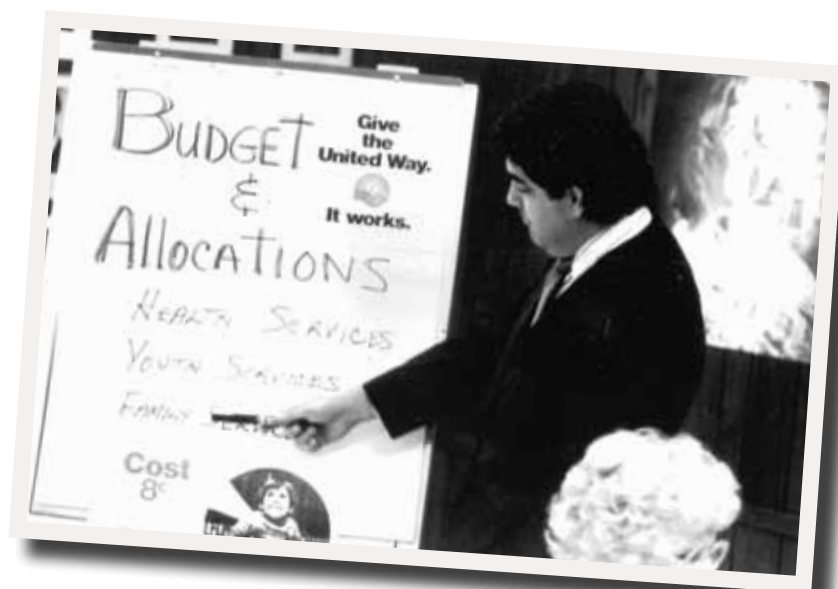
Preschool Child Care
School Age Child Care

Vita Education Services

ESL Class for Immigrants

YWCA Bucks County

Employment Program
Family Center Programs
Senior Shared Housing
Prevention Programs
Youth Services



Volunteers review funding for programs

Resources Under Management

United Way of Bucks County has been making a greater impact on the community by bringing programs and services that are grant funded to Bucks County. 2011 saw the largest amount of grant funding coming through UWBC, which provided important resources to a host of community programs and diversifying our revenue stream. A few of these programs are highlighted here:

Pre-K Counts – \$312,900 per year – this is the fifth year of the program for the Commonwealth of Pennsylvania through the Office of Child Development and Early Learning. This grant provides Quality Pre-Kindergarten education for 62 children throughout the County and professional development/education for teachers to ensure quality quality education for the children. UWBC serves as the lead agency (grant holder) for the 4 Pre-K Centers that participate in this program.

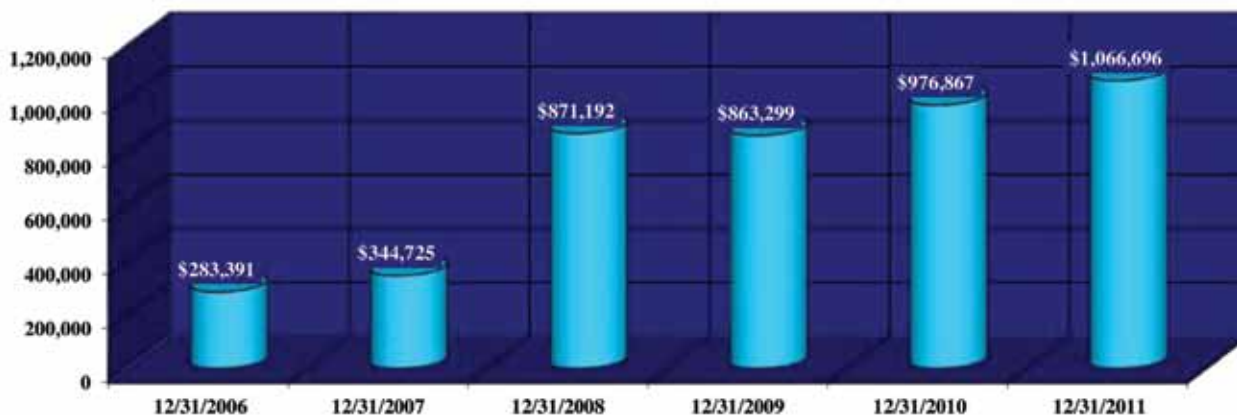
Children’s Trust Fund – Strong Families, Safe Children Grant of \$40,000 for 3 years (we are currently in Year 2)- to provide coaching/mentoring for family child care professionals regarding identifying and reporting potential child abuse and neglect.

21st Century Learning Center Grant (Cohort 5) – \$1,380,000 over 3 years to provide after school and summer, academic and cultural enrichment opportunities for grades 6-12 in partnership with Bristol Borough School District. (Cohort 6) - \$1,260,000 over 3 years to provide after school academic enrichment opportunities primarily for grades 4-6 in partnership with the Bristol Borough School District.

LYFT – Drug Free Communities Grant – \$125,000 per year for up to 5 years (we are in year 2 of a second cycle) of this program that works with Pennsbury School District through a community coalition to support efforts to minimize risk-taking behavior and maximize access to prevention education opportunities and resources to assist youth and families.

LYFT – SPF-SIG (Strategic Prevention Framework – State Incentive Grant) – Approximately \$25,000 per year for 4 years - In collaboration with The Council of Southeast Pennsylvania Inc., the Pennsbury LYFT program has received funding, support services, and programs focused on reducing underage drinking.

Grant Revenue



United Way of Bucks County

Statement of Operations (Pre-audit)
For the Year Ended 12/31/11

Public Support and Revenue

Net Campaign Revenue	
Gross Campaign	2,283,934
Less: Donor Directed Gifts	(232,573)
Less: Provision for Uncollectibles	(146,505)
Net Campaign Revenue	<u>1,904,856</u>
Grant Revenue	1,066,696
Donated Services & Materials	524,877
Other Revenue	61,686
Net Return(Loss) on Investments	(9,277)

Expenditures

Community Impact Expenses	
Distributions to Bucks County	1,372,423
Less: Donor Directed Gifts	(232,573)
Net Distributions to Community	<u>1,139,850</u>
Community Initiatives, inclg Grants	1,201,007
Donated Services & Materials	524,877
Community Impact	44,061
Funds Distribution	62,038
Individual Services	61,333
Community Impact Expenses	<u>3,033,166</u>
Fundraising	215,871
General & Administrative	252,883
United Way Support	<u>22,968</u>

Public Support and Revenue

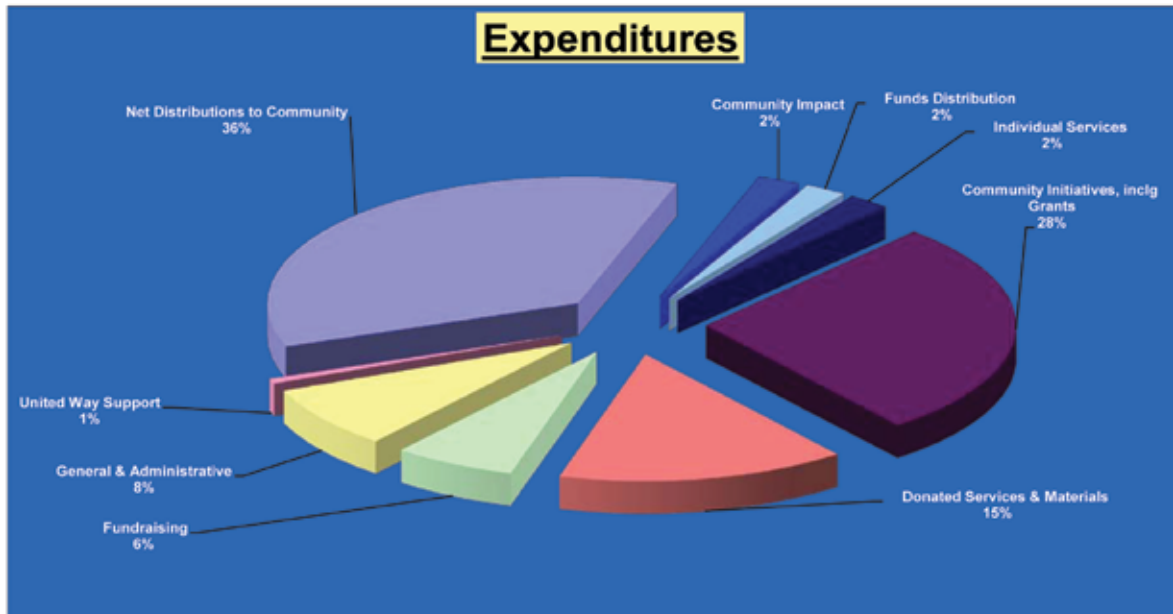
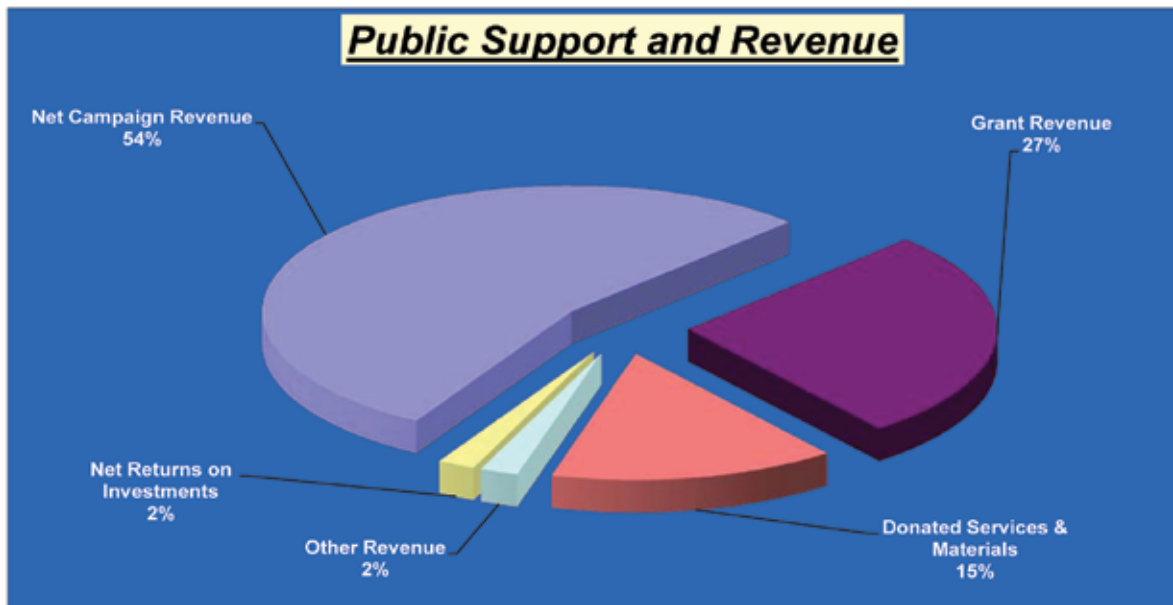
3,548,838

Expenditures

3,524,888

Net Surplus

23,950

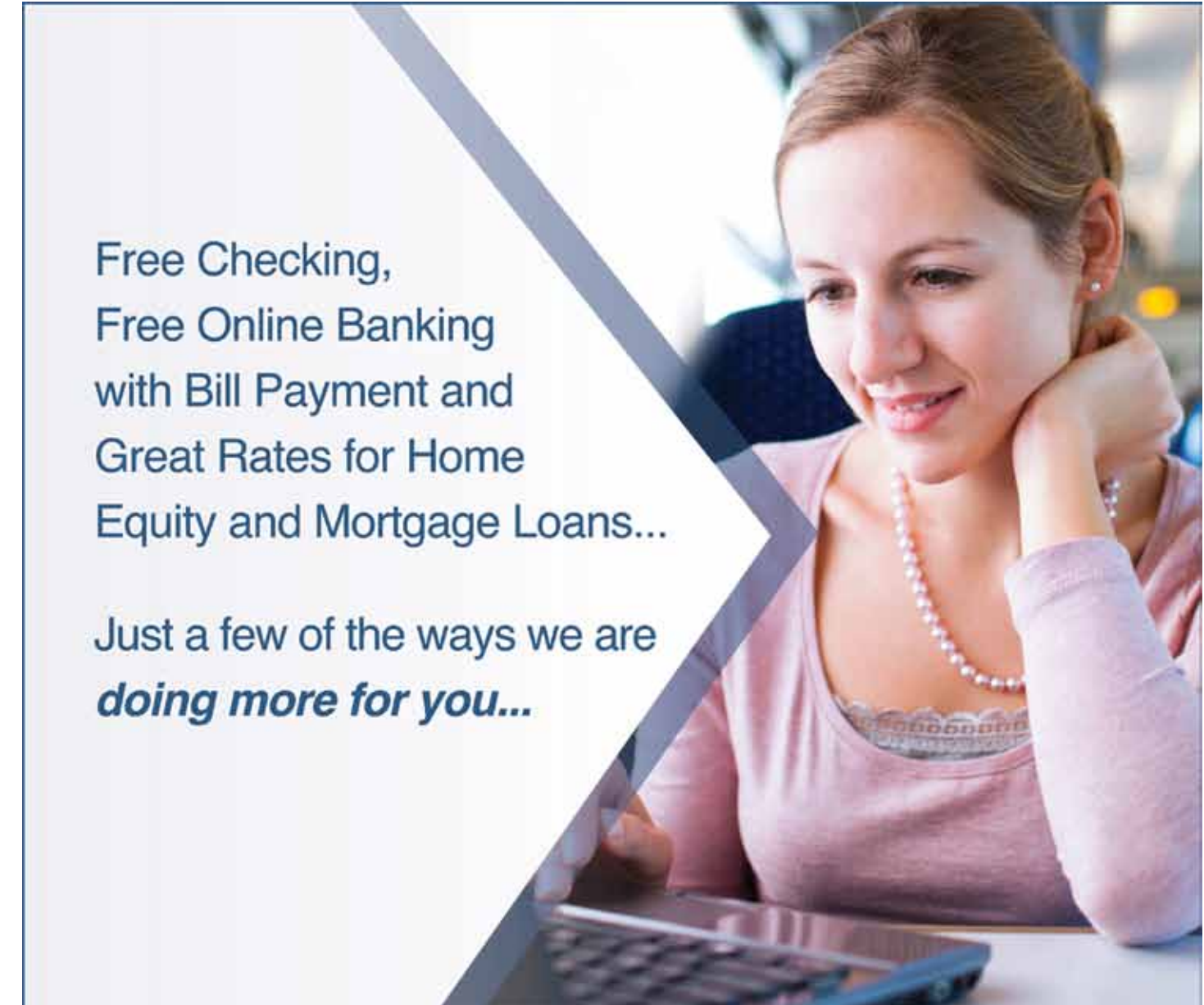


21st Century AOC – 3M Retirees – 3M–Philadelphia Sales Center – A Woman’s Place – Abbott Laboratories – Accenture – ACME Markets – Acxiom – ADP/Manhattan – Advertising Specialty Institute – Aetna US Health Care – Agilent Technologies – Air Products & Chemical – Aldie Counseling Center – Alfa Laval – Allstate Insurance Company – Ally – American Century Investments Dollars for Donors Fund – American Express – American Red Cross, LB Chapter – Ametek, Inc. – Andersen Corporation – AON/ Affinity Insurance Services, Inc – ArcelorMittal Matching Gift Program – Arkema – Ashland Oil Company – AT&T – Avery Dennison Corp (Fasson) – B. J.’s Wholesale Club – Main Account – BankAmerica – BARC Developmental Services – Barnes Distribution – BC Drug & Alcohol Commission – BC Intermediate Unit #22 – Begley Carlin & Mandio, LLP – Bensalem Township School District – Best Buy Company Main Account – Big Brothers/Big Sisters of BC – BNY Mellon – Boeing Employees – Bon Ton – Boscov’s Department Store – Boy Scouts of America, BC Council – Bristol Borough School District – Bristol Township School District – Bristol–Myers Squibb – Buchanan Fundraising – Bucks County Bank – Bucks County Community College – Bucks County Courier Times – Bucks County Free Library – Bucks County Head Start – Bucks County Housing Authority – Bucks County Housing Group – Bucks County Opportunity Council – Bucks County Technical High School – Bucks County–Workforce Investment Board – Butterball – C & S Wholesale Grocers – Capital Area United Way – Carroll Engineering – Centennial School District – Central Bucks School District – Ceridian – CFC – Child, Home & Community, Inc. – Children’s Developmental Program – CIGNA – Citizens Bank of Pennsylvania – Comcast Cable – Constellation Energy – Contact, Greater Philadelphia – Costco – Council of SE PA – Council Rock School District – County of Bucks – Credit Counseling Center – Delaware Valley College – Deloitte & Touche – Deluxe Corporation Foundation – Dominion – Dow Chemical – Draeger – Dunmore Corp – Educational Testing Service – EnForm Graphic Productions, Inc. – Enterprise Rent–A–Car – Equifax – ExxonMobil Foundation – Family Service Association – Federal Express Corporation – First Data – First Federal of Bucks County – First Niagara Bank – Fisher Clinical Services – Fox Chase Chemical Diversity Center, Inc. – Fulton Bank – GE Water & Process Technologies – Geisinger Health System – Genworth Financial – Giant Food Stores – Giles & Ransome, Inc. – Girl Scouts of Eastern Pennsylvania – GM Service Parts Operation – Good Friends, Inc. – Grand View Hospital – The Grundy Foundation – Habitat for Humanity of Bucks County – Harold Beck & Sons, Inc. – Heraeus Electro–Nite Co – Hershey Foods Corp – Hewlett Packard – Hoffman–LaRoche – Home Depot – Honeywell Hometown Solutions – HSBC (Household International) – Hyman Korman Family Foundation – IBM Corporation – Insaco Incorporated – ITW – J.C. Penney – Jacobs Engineering – Janney Montgomery Scott – Johnson & Johnson, Inc. – Johnson, Kendall & Johnson – JP Morgan Chase & Co – Kellogg Company – Laboratory Corp. of America – Legal Aid of Southeastern PA – Lexis Nexis Cares – Lexmark International – Libertae – Liberty Mutual – LifeQuest – Lifespan Adult Day Health Center – Lincoln Financial Group – Lockheed Martin – Lowe’s – Lower Bucks Chamber of Commerce – Lower Bucks Community Centers – Lower Bucks Family YMCA – Lucent Technologies – MacSteel – Macy’s – Marsh & McLennan – Marshall, Dennehey – McCafferty Auto Group – McGraw–Hill Companies – McKnight Steel & Tube – Medco Health – Merck & Company, Inc. – Microsoft – Middle Bucks Institute – Mile High United Way, Inc – Milton Roy Co. – Morgan Stanley – Morrisville School District – Motorola – National Penn Bank – Nationwide Insurance Enterprise – Neshaminy School District – Network Of Victim Assistance – New Hope–Solebury School District – New Jersey State Employees Charitable Campaign – New York Life Insurance Co. – Northampton Township – Northwestern Human Services – NRG Energy – NuStar Energy LP – OfficeMax – Palisades School District – PECO – Penn Color, Inc – Penn State – Penndel Mental Health Center – Pennridge School District – Pennsbury School District – Pennsylvania American Water – Pfizer International – Pierce Phelps – Pitney Bowes – Plymouth Community United Way – PNC Bank – PPL Corporation – Principal Financial Group – Prudential Insurance – PSE&G – QNB – Quakertown Community School District – Raymond James & Associates, Inc. – Rhodia Corporation – Roche Diagnostics/Boehringer – RR Donnelley – Ryerson – Safelite Fairless Hills – SECA – Sesame Place – Siemens – Siemens Medical Solutions – Sovereign Bank – St Mary Medical Center Foundation – St. Luke’s Quakertown Hospital – Stanley Convergent Security Systems – State Farm Insurance – Susquehanna Bancshares, Inc – Sykes Acquisition, LLC – Tara Tape – Target Stores – TD Bank – Team Capital Bank – The Dump – The Presbyterian Congregation of Newtown – Third Federal Bank – TODAY, Inc. – Tri–County United Way – Triangle United Way – Unisys – United Health Group – The United Illuminating Company – United Parcel Service – United States Steel – United Way for Southeastern Michigan – United Way Greater Battle Creek – United Way of Allegheny County – United Way of Bergen County – United Way of Berks County – United Way of Bucks County – United Way of Burlington County – United Way of Camden County – United Way of Central and Northeastern Connecticut – United Way of Central Arkansas – United Way of Central Indiana – United Way of Central Maryland – United Way of Central Ohio – United Way of Chester County – United Way of Delaware – United Way of Forsyth County, Inc – United Way of Gloucester County – United Way of Greater Cincinnati – United Way of Greater Cleveland – United Way of Greater Kalamazoo – United Way of Greater Kansas City – United Way of Greater Lehigh Valley – United Way of Greater Los Angeles – United Way of Greater Mercer County – United Way of Greater Milwaukee – United Way of Greater Portland – United Way of Greater Rochester – United Way of Greater Twin Cities – United Way of Hunterdon County – United Way of King County – United Way of Lancaster County – United Way of Metro Atlanta, Inc. – United Way of Metro Chicago – United Way of Morris County – United Way of New York City – United Way of North Central MA – United Way of Northeast Florida – United Way of Northern New Jersey – United Way of Palm Beach County – United Way of Racine County – United Way of Saginaw County – United Way of San Antonio – United Way of Southeast Delaware County – United Way of Southeastern PA – United Way of Summit County – United Way of the Capital Region – United Way of the Greater Dayton Area – United Way of the Midlands – United Way of Williamson County – United Way of Wyoming Valley – United Way Silicon Valley – United Ways of New England – Univest Corporation of PA – Upper Bucks Technical School – Valley of the Sun United Way – Valley Youth House – Verizon – Vita Education Services – Wal–Mart – Walgreens – Warminster Fiberglass Co. – Wegmans Food Markets, Inc. – Wellpoint Foundation – Wells Fargo – Williams – Woods Services – Worthington Associates – Yellow Freight Systems – YWCA of Bucks County

United Way of Bucks County Celebrates our 60th Anniversary

- 1952** – Headed by Clyde J. Waterman and Anthony Burton, a group of concerned citizens, businessmen, and organized labor representatives from all over Bucks County assembled to form an organization that would be known as **Bucks County United Services Federation**.
This was in response to the massive changes in the County that had occurred due to development and the influx of people. The existing agencies and groups that had been caring for the needy, ill and underprivileged were looking at a greatly increased burden. Due to this, it was also recognized that the increasing number of appeals for money was a source of irritation at many of the industries and businesses in the area. Mr. Waterman and his group felt the need to take action. **The answer to the problem they felt, was a United Campaign.**
Many of the first meetings were held in a little room on the second floor of a business in Pennel, at 127 South Bellevue Avenue.
- 1953** – The **first offices were established** in Bristol at Wood and Mills Streets, and in Doylestown on North Main.
- 1955** – The main office had been moved to Pennel, just two doors down from where the original meetings were held.
Early records show that the original Federation funded 12 agencies.
- 1960** – The organization moved to Fairless Hills Shopping Center.
- 1965** – There was a need for more space. The organization had already acquired a parcel of land and began a building fund. The **Bucks County Medical Society offered Polio Vaccinations for 25 cents to the public** as an immunization program and fundraiser. The area physicians who donated their time never dreamed the success would be so great, both medically and financially. The Medical Society was able to donate \$30,000 to kick off the building fund.
- 1966** – The *Federation changes its name* to **United Community Services of Bucks County**.
- 1967** – With the help of the Bucks County Medical Society, the Grundy Foundation, and the U.S. Steel Foundation, the staff **moved into the current headquarters on Hood Blvd in Fairless Hills.**
- 1974** – **The name was changed** once more, to its current “United Way of Bucks County.”
- 1978** – By now, the United Way of Bucks County is funding 35 agencies.
- 1988** – United Way of Bucks County takes the lead on **Operation Helping Hand** – the one day food drive throughout the County that was started by U.S. Steel Executives wives.
- 1999** – United Communities, an initiative that focuses on community building through collaborations is initiated.
- 2006** – **Success By 6**, an early childhood initiative to promote that all children in Bucks County are ready to learn when they enter school, is launched. United Way has set a course of **investing in Community Impact initiatives.**
- 2012** – **United Way of Bucks County is celebrating 60 years of supporting the Bucks County community through investments in programs that make a difference in the lives of our residents.**





Free Checking,
Free Online Banking
with Bill Payment and
Great Rates for Home
Equity and Mortgage Loans...

Just a few of the ways we are
doing more for you...



**FIRST FEDERAL
OF BUCKS COUNTY**

To learn how we can do more for you,
visit www.firstfedbucks.com or call 215.788.3344.



Free Checking Account has no minimum deposit, no monthly service charge, no per-check fees. Customer responsible for other fees associated with account, such as purchase of checks, non-sufficient/unavailable fund fees, stop payments fees and/or fees assessed at non-First Federal of Bucks County ATMs. Please see First Federal of Bucks County Schedule of Fees for full list. Account subject to ChexSystems approval.

Bensalem Bristol Langhorne Levittown Lower Makefield
New Hope Southampton Wrightstown Newtown Yardley

making a
difference
in every
community
we serve

At Wegmans, we strive to make a difference in every community we serve. Part of that effort is supporting local, regional, and national organizations.

We're glad we can help.

Wegmans

1405 Main St. • Warrington, PA 18976 • (215) 918-3900
wegmans.com



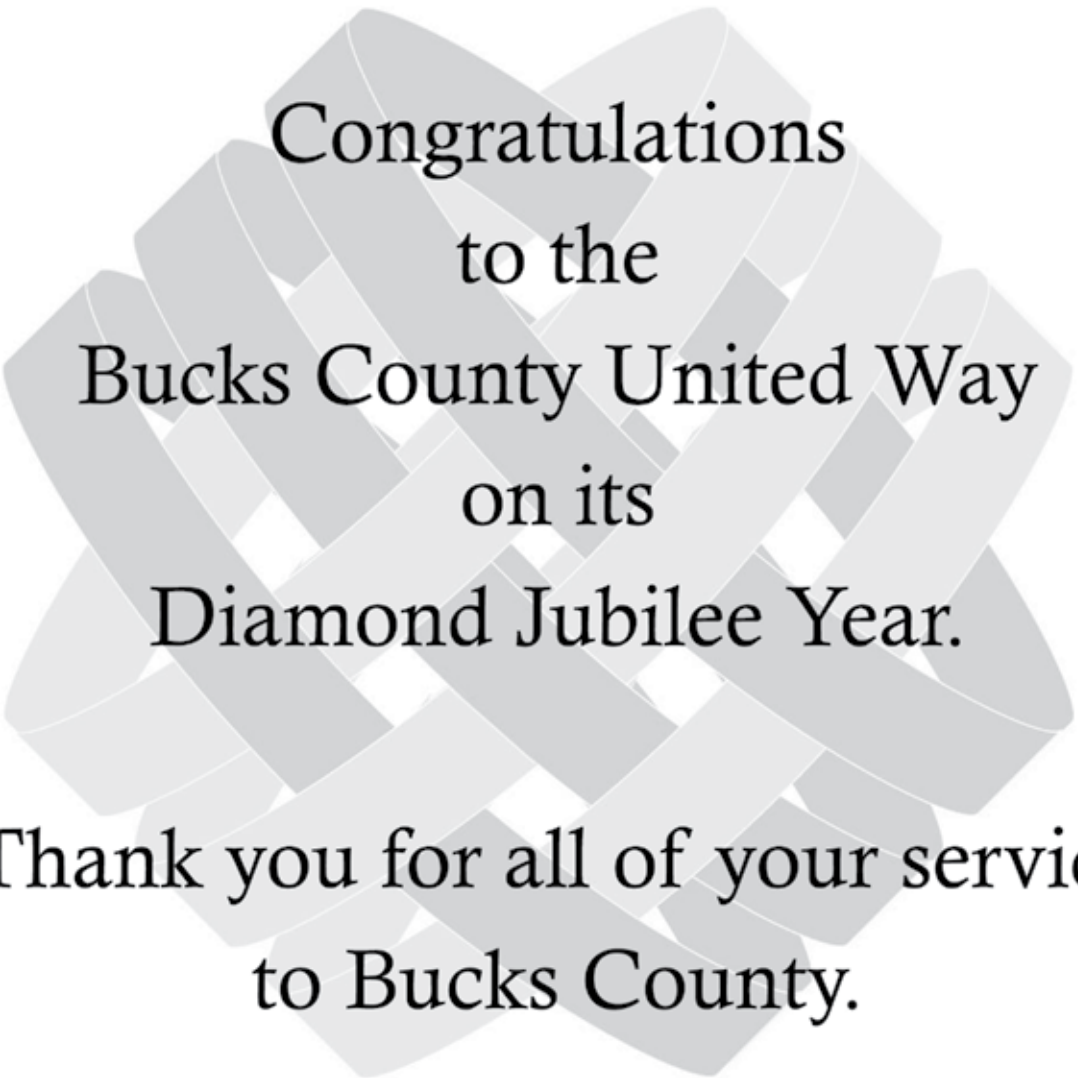
we are proud to support
the united way

parx
casino™

exit 37 off i-95 or exit 351 off the pa turnpike
parxcasino.com • 1.888.588.parx



gambling problem? call 1-800-gambler



Congratulations
to the
Bucks County United Way
on its
Diamond Jubilee Year.

Thank you for all of your service
to Bucks County.



HILL WALLACK LLP
ATTORNEYS AT LAW

Princeton, NJ | Yardley, PA
(609) 924-0808
www.hillwallack.com



We put our energy into the community.

At PECO, our employees invest thousands of volunteer hours and contribute more than \$5 million annually to help our communities grow and prosper. We also champion efforts that impact education, the environment, arts and culture, and community enrichment in our region.

PECO and Board Member Doreen Masalta are proud to support the United Way of Bucks County and join them in honoring the 2012 Award Recipients.

Find out more at www.peco.com/community

© PECO Energy Company 2011



*At Team Capital Bank,
we believe in the work you do
in our local community.*

“Thank You”

to



*and all the contributing
non-profits for inspiring us to*

LIVE UNITED

TeamCapitalBank
Different. Better.

Experience exceptional banking.

**18 North Main Street, Doylestown
(267) 327- 4505
210 Penns Trail, Newtown
(215) 497- 7447**



www.teamcapitalbank.com

A United Way Agency specializing in the treatment of people whose lives are affected by alcohol and other drugs.



215-345-8530 – 11 Welden Drive, Doylestown
215-642-3230 – 2291 Cabot Blvd. West, Langhorne

www.Aldie.org

Assessment – Evening Recovery Program
Individual, Family & Group Therapy
Mobil Engagement Services - Pharmacotherapy



We are experts in empowering people to reach their financial goals and dreams.

Thank you United Way Bucks County for helping us reach more families in need.

(215)348-8003 ccc-credit.com



Computer & Network Service

Web Site & Email Hosting

Cloud Services

Full-Service IT Consulting

215-CARISMA
www.carisma.net

**Proudly serving the
United Way since 2005**



Network of Victim Assistance

Advocacy, Prevention & Support for Victims of Crime in Bucks County

We Can Help...

24-Hour Victim Support Hotline 1-800-675-6900

2370 York Road • Suite B1 • Jamison, PA 18929
(215) 343-6543 • TTY (215) 343-6299 • FAX: (215) 343-6260
www.novabucks.org • E-mail novainfo@novabucks.org

NOVA offers the following free services to all crime victims:

- 24-Hour Victim Support Hotline
-
- Short Term Individual & Group Counseling
-
- Accompaniment in Legal Proceedings,
Police Interviews and Emergency Rooms
-
- Assistance and Crime Victim Compensation Applications
-
- Information About Your Rights as a Victim

Green is community



FDIC

3rd FED BANK

Since 1921, one community bank has grown safely and steadily thanks to rock-solid financial principles and loyal local customers.

We're proud to be part of this community.

Newtown

950 Newtown Yardley Road
(215) 968-4444

www.ThirdFedBank.com

GO GREEN!

Green is my bank.



www.todayinc.org

**PROVIDING COMPREHENSIVE BEHAVIORAL
HEALTH SERVICES SINCE 1971**

**PROUD MEMBER AGENCY OF
UNITED WAY OF BUCKS COUNTY**

FOR INFORMATION CALL

**215-968-4713 - Treatment
215-244-7607 - Prevention**

TODAY, Inc. is licensed by the Pennsylvania Department of Health, Drug & Alcohol Program Licensing and the Pennsylvania Department of Public Welfare; and accredited by the Joint Commission on Accreditation of Healthcare Organizations (JCAHO)

**PROUD MEMBER AGENCY OF
UNITED WAY OF BUCKS COUNTY**



INTERFAITH HOUSING
DEVELOPMENT CORPORATION OF BUCKS COUNTY

Faith + Community = Hope Through Affordable Housing

**Congratulations to
United Way of Bucks County
on your
Diamond Anniversary!**

Celebrating our 25th year of honoring our mission: To provide housing for sale or rent to low income & homeless families and to assist them in becoming self-sufficient."

www.ihdcbc.org
805 N. Wilson Ave Bldg.100, Suite 102 Bristol PA 19007

**Fulton Bank
is proud to support
the United Way.**



Fulton Bank

LISTENING IS JUST THE BEGINNING.®

1.800.FULTON.4 | fultonbank.com

Fulton Bank, N.A. Member FDIC. Member of the Fulton Financial Family.



Bucks County
Quality Child Care Coalition
for Early Care and Education

Working to enhance the quality of early childhood programs in Bucks County

QCCC is proud to partner with United Way of Bucks County Success By 6

To learn more, visit www.bucksqccc.org



**BUCKS COUNTY
OPPORTUNITY COUNCIL**

Dedicated to helping low-income people of Bucks County achieve and maintain economic self-sufficiency.

We thank the United Way of Bucks County and the community for their wonderful support of our work.

www.bcoc.org



*...proudly supports
United Way of Bucks County!*

**We build homes and
we build hope.
Build with us!**

Habitat for Humanity
of Bucks County
ReStore

Shop Volunteer Donate

31 Oak Avenue,
Chalfont, PA 18914

www.habitatbucks.org

Donate your vehicle to
help build homes.



877-277-4344

carsforhomes.org

GIANT®

Proud supporter of

United Way of Bucks County



GiantFoodStores.com

William Penn Center Preschool



Providing Quality Early
Childhood Programs for Our
Community Since 1952.

Located in "Historic Fallsington"

9300 New Falls Road
Fallsington, PA 19054
215-295-8154
215-295-5819 (fax)
www.WilliamPennCenter.org
LBCC1952@comcast.net

Always you. Always QNB.

Yesterday.

134 years of independence, serving families and businesses in our area.

Today.

Long-time employees dedicated to raising the bar on customer service.

Tomorrow.

Strong, true to our roots and committed to the community.



Call: 215-538-5600 Click: www.QNB.com

Visit: Any of our 9 convenient locations in Quakertown, Dublin, Pennsburg, Perkasie, Coopersburg, Souderton & Wescosville



First Federal of Bucks County Campaign Check Presentation

Bucks County Women's Initiative, Power Of The Purse

LYNN DOYLE

MULTI-AWARD
WINNING JOURNALIST
PHILANTHROPIST
PUBLIC SPEAKER

IT'S YOUR CALL

WITH LYNN DOYLE *****

The Comcast Network

Sundays 8:30 PM ET

Mondays 5:30 PM ET

Comcast Cable Channels 8 & 201

Verizon FIOS Channel 99

RLTV [Redefine Life TV]

Mondays 9 PM & 9:30 PM ET

Monday - Friday 7 PM ET

Channel 175 or 245 on most cable systems



TO HAVE LYNN AS A SPEAKER
VISIT WWW.LYNNDOYLE.NET

WWW.LYNNDOYLE.net



STIFEL
NICOLAUS

Stifel Nicolaus
is delighted to support the
United Way of Bucks County
and their
Annual Meeting and Awards Celebration

Paul M. Furlong

First Vice President/Investments

Timothy P. Gormley, CFP®

First Vice President/Investments

Kathleen Zelenka

Financial Advisor

(215) 504-1600 | (800) 223-7635

*1020 Stony Hill Road, Suite 100
Yardley, Pennsylvania 19067*

Investment Services Since 1890

STIFEL, NICOLAUS & COMPANY, INCORPORATED

MEMBER SIPC AND NYSE | WWW.STIFEL.COM



The Bucks County Pre-K Counts Consortium appreciates and applauds the efforts of our partners

Sharon K. Barker, CFRE

Patricia Stern Smallacombe, Ph.D.

United Way of Bucks County

Success By 6

for on-going efforts to support and promote
quality early childhood initiatives
to ensure that every child
is ready to succeed when entering school.

~ ~ ~

Thank you from ...

Ms. Michele Anderson: Pre-K Counts of Bristol Township SD

Ms. Marianne Chisesi: Bucks County IU-Early Intervention

Ms. Jacqueline Ezzell: PA Pre-K Counts Relationship Manager

Ms. Michele Fina: Morrisville YMCA

Dr. Christine McKee: Pre-K Counts of Neshaminy SD

Ms. Pat Miiller: Bucks County Quality Child Care Coalition

Dr. Lynn Orlando: Holy Family University

Ms. Laurie Ruffing: Pre-K Counts of Morrisville SD

Ms. Sarah Shoffler: Bucks County IU - Tender Bridges

Ms. Marcia Straka: Bucks County Head Start



United Way of Bucks County Staff

Jamie Haddon, President & CEO
Sharon Barker, SVP, Community Impact & Development
John Ramirez, Director, Finance
Jeanmarie Foy, Director, Workplace Campaigns
Patricia Stern Smallacombe, Director, Impact Initiatives and Outcomes
Marissa Christie, Project Director – 21st Century/Marketing
Patricia W. Gallagher, Office Manager, Administrative Assistant
Danielle Bush, Community Impact Assistant
Dan Warvolis, Finance Assistant
Lynn Sabo, Campaign Assistant
Paulette Gerstemeier, Community Impact Assistant

Grant Funded Staff

Candida Guerrero, Grant Assistant
Lizette Morales-Chomicki, Project Coordinator - LYFT
Maura Papazian, Community Outreach Coordinator - LYFT
Michelle Lenoir, Project Coordinator - 21st Century, Pre-K Counts & LYFT
Tim Philpot, Community Outreach Director - LYFT
Nekesha Wilkerson, Project Director

Campaign Consultants (Seasonal)

Barbara DeFlavis, Christina Dowling, Jim Streffler, Shirley Washington

413 Hood Boulevard
Fairless Hills, PA 19030
215-949-1660
www.uwbucks.org

United Way
of Bucks County

