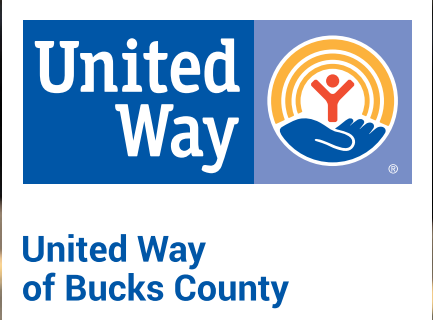
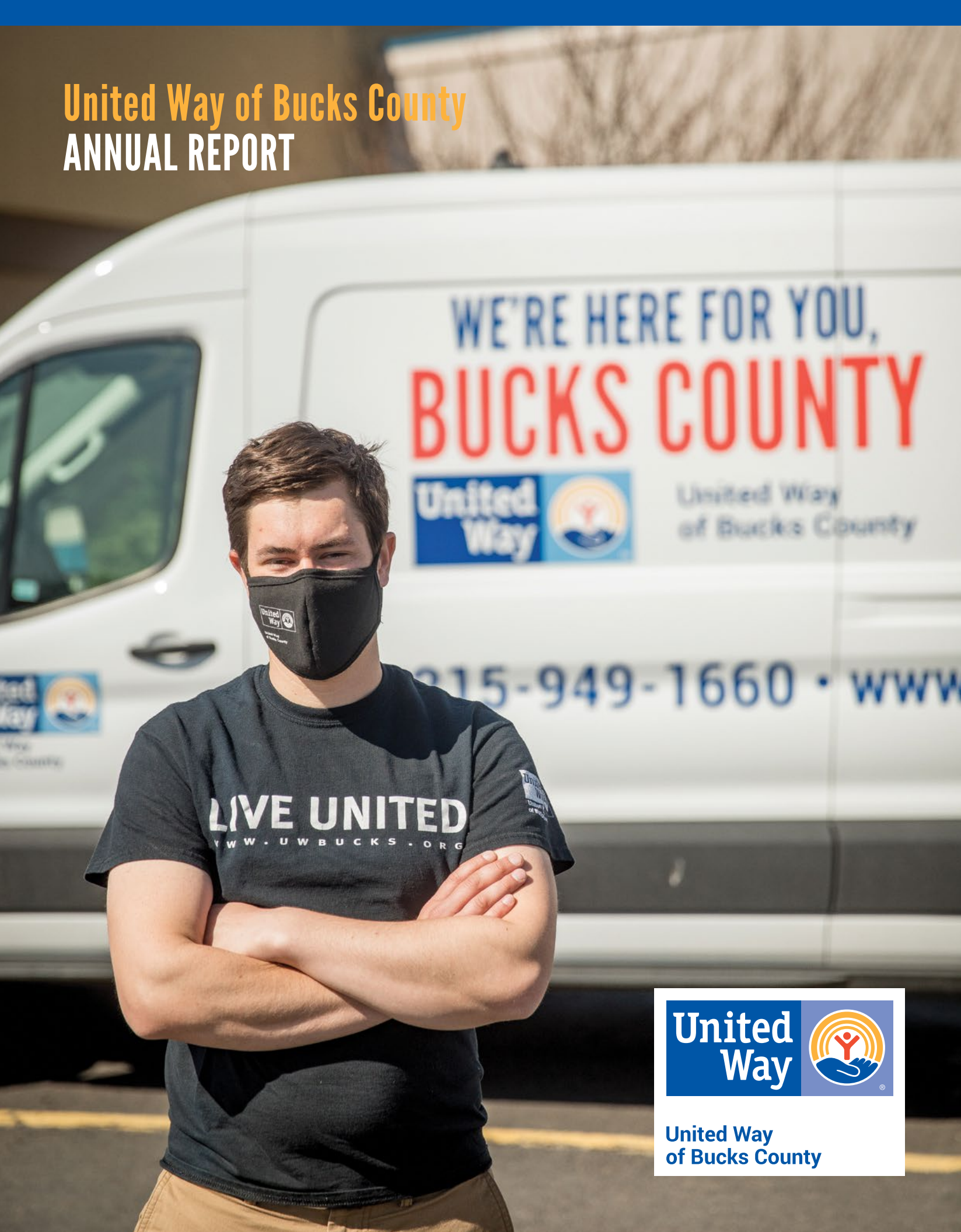


United Way of Bucks County ANNUAL REPORT



Penn Community Bank is proud to partner with

United Way of Bucks County



At Penn Community Bank, our commitment to helping families, businesses, and communities grow drives everything we do.

Visit a branch or PennCommunityBank.com to discover Greater Good Banking.



PennCommunityBank.com | 215.788.1234



Member FDIC

Table of Contents

Mission 3

Message from Our CEO & Board Chair 5

Your United Way Board & Staff..... 6

AWARDS & RECOGNITION

Kelton Service Award..... 9

Paul Sauerbry Award 11

MAKING AN IMPACT

COVID-19 Recovery Fund 12

HELP Center..... 16

Emergency Needs and Financial Stability 20

Food Access 22

Education..... 24

Housing & Homelessness 28

2-1-1 30

Diversity, Equity, and Inclusion 32

ANNUAL REPORT

By the Numbers..... 34

Statement of Operations 36

Expenditures Made Easy 37

Member Agencies 39

Thank You to Our Partners 41

Thank You to Our Leadership Donors 45



12



28



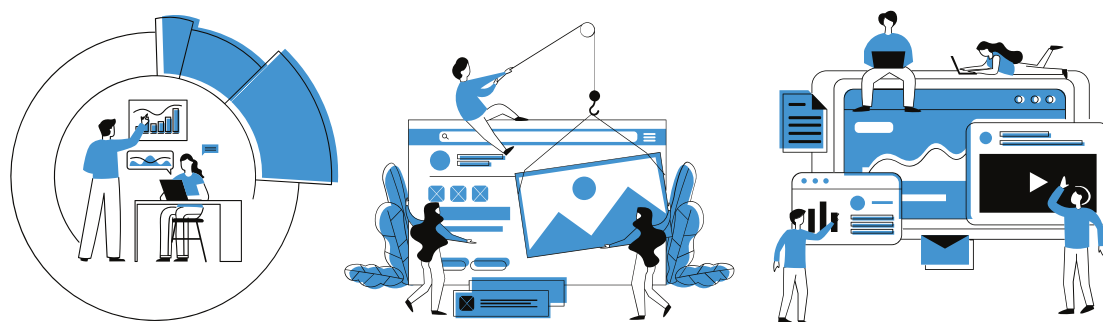
30



VIRTUAL & HYBRID EVENTS

LEVEL UP

your next event



Stream Virtual is your go-to company for high end live streaming events. Our team of event experts will be there for you from the initial planning phase to the event day. We specialize in fully remote virtual productions, in person events being streamed live to a remote audience, or a combination of both worlds. Let us help you level up your next event.

www.streamvirtual.com info@streamvirtual.com

VIRTUAL | HYBRID | WEBINAR | LIVE STREAM | RECORDINGS

United Way of Bucks County MISSION

Since 1952, UW Bucks has been improving lives in Bucks County by uniting donors, advocates, and volunteers around the common good. We seek out Bucks County's toughest challenges. We work with others to develop strategies that will ensure real, lasting change. Then, we tackle those big challenges in a United Way.

OUR MISSION

United Way of Bucks County creates opportunities for quality education, financial stability, and good health to ensure real, lasting change for individuals and our communities.

OUR COMMITMENT TO BUCKS COUNTY

United Way fights for the health, education, and financial stability of every person in every community.

OUR DIVERSITY, EQUITY, AND INCLUSION STATEMENT OF PRINCIPLES

We believe every person brings a unique perspective and experience to support our mission and advocate for health, education, and financial stability in our community.

We welcome everyone in Bucks County to have equal access to our programs, resources, services, and facilities.

We ensure that our policies and procedures are fair and equitable to our diverse members.

We commit to advance our culture and business practices to be a model of diversity, equity, inclusion, and belonging.



Your business has a story to tell



LET THE VISUAL COMMUNICATIONS EXPERTS AT FASTSIGNS® HELP YOU TELL IT.

Ready to get started? Your FASTSIGNS consultant is more than ready to help.

FASTSIGNS®
More than fast. More than signs.®

463 South Oxford Valley Rd.
Fairless Hills, PA 19030

215-269-1400
www.fastsigns.com/307

©2016 FASTSIGNS International, Inc. Each location independently owned and operated.

Message from CEO Marissa Christie & Board Chair Catherine McElroy

"We are ready to fight for the education, financial stability, and health of every person in our community. That means viewing everything we do through an equity lens."

For many of us, 2020 was the ultimate test. It was the year that somehow bobbed between tedious and terrifying. It was at the same time monotonous and massively overwhelming.

We are incredibly proud of what we accomplished in 2020. We did things that would have seemed impossible a year earlier.

In 2020, we needed to help our community respond to and recover from the challenges of the global pandemic. To that end, we established the Bucks County COVID-19 Recovery Fund, raised about \$500,000, and distributed every penny in just under one year.

We secured a new 8,000 square foot facility, christened it the HELP Center (healthy eating and living partnership), and provided over 100,000 people with the essentials – food, PPE, home goods, and more – that they couldn't afford on their own.

Our hunger relief programs tripled their service. Our emergency needs program filled in gaps that couldn't be filled by public funding. Our early education partners worked tirelessly under challenging circumstances to meet young children's physical, educational, and psycho-emotional needs.

We heard stories that broke our hearts and we heard stories that inspired hope. Sometimes our work drained us and sometimes it filled us up. It was hard to see so many people in need of help for the first time. It was humbling to be there for them.

None of this would have been possible without the outpouring of support and generosity from friends and neighbors who care about

this community. Thank you. Thank you. Thank you. We will never be able to say it enough.

If 2020 was a test, we did well – but the test isn't over yet.

Next, we must work with our community to reimagine and rebuild. We don't want to go back to "normal" because normal wasn't working for too many people.

Our old normal was a world where we could predict your socioeconomic outcomes by your race and your zip code. It was a world where growing income inequality put 1 in 4 Bucks County residents in a category that we call ALICE: Asset Limited, Income Constrained, and Employed. (For the record, ALICE was more financially impacted by COVID than any other subset of our population. They will need our help the most going forward.)

We believe that we can do better. We are ready to reimagine a world where better collaboration and coordination in our sector yields better results. We are ready to fight for the education, financial stability, and health of every person in our community. That means viewing everything we do through an equity lens.

If you share our belief that we can reimagine and rebuild a strong, prosperous, and equitable community for all people, join us.

Your support – time, talent, and treasure – will ensure that change happens *for good* in Bucks County.



Marissa Christie
President & CEO



Catherine McElroy
Board Chair

Your United Way Board & Staff



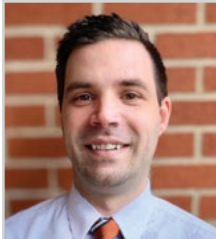
Todd Alderfer
Immediate Past
Board Chair
Senior Vice President,
QNB Bank



Kevin Crawford
Board Treasurer
Vice President, WSFS



Karen Johnson-Susko
Board Member
(elected 9/9/2020)
Global Customer Care
Director Supply Chain,
SUEZ Water Technologies
& Solutions



Brian Papsun
Board Member
Senior Tax Manager,
Grant Thornton LLP



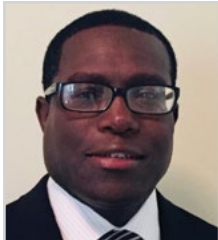
Claire Quinn
Board Member
Production Director,
Dow Chemical Canada
ULC



Paul Bencivengo
Board Member; Vice
Chair, Nominating
Committee
President/COO,
Visit Bucks County



Colleen Doll
Board Member
BucksMont Work
Management, PECO



Dr. Kern Jolibois
Board Member
(elected 9/9/2020)
Senior Thought Leader
Liaison, Genentech



Faith Parkinson
Director of Finance &
Administration



Sheri Ratner
Donor Relations &
Volunteer Manager



Joanne Bogrett
Chief Development
Officer



Kristen Elder
Board Member,
Corporate Secretary
CPA and finance leader



Heiner Markhoff
Board Member
(term concluded
5/8/2020)
Chief Executive Officer,
GE Grid Solutions



JoAnn Perotti
Board Member
(term concluded
5/8/2020)
Director of Strategic
Services, Bucks County
Intermediate Unit



Carol Schramm
Board Member
(elected 9/9/2020)
Finance Executive,
Gannett



Justin Brown
Board Member
Director of Pigment
Dispersions,
Quaker Color



Lauren Foisy
Americorps VISTA
Volunteer



Katie Matarazzo
Executive Assistant &
Project Manager



Dennis Pfeiger
Board Member
President, St. Luke's
University Health
Network, Upper Bucks
Campuses



Tom Sofield
Board Member
Publisher,
Levittown Now



Christina Burner
Resource
Development
Associate



Candi Guerrero
Director of Education



Catherine McElroy
Board Chair
Community
Representative



Tim Philpot
Director of Financial
Stability & Health



Tiffany Thomas-Smith, Esq.
Board Member
(elected 9/9/2020)
Senior Partner, Owner, The
Thomas Smith Firm, P.C.



Marissa Christie
President &
Chief Executive
Officer



Shannon Hibbs
Assistant Director,
Pre-K Counts &
Database Manager



Patrick "P.J." O'Brien
Impact Services
Coordinator



Dr. David Pocalyko
Board Member
(elected 9/9/2020)
Senior Director,
Janssen Research &
Development



Jeane Vidoni
Board Member,
Vice Chair
Community Impact
President & CEO,
Penn Community Bank

HONORARY LIFE MEMBERS

Jacqueline Bowers

Dr. Gary L. Bowman

Kathy Brett

Lynn T. Bush

Richard O. Coe

Michael Connor

Karen Dawkins

J. Peter Dominick

Thomas P. Donnelly, Esq.

James Dowling

Grover Friend

David J. Gondak

Brian Jeter

Trish Markel-Mulligan

Jack McCaughan

Mark Worthington

ADDITIONAL TEAM MEMBERS

Michele Anderson
Administrative Assistant, Pre-K Counts
(through 6/30/20)

Jenn Dredge
Board Member
(through 9/30/2020)

Kim Hearn
Community Impact Manager
(through 9/11/2020)

Danielle Long
Assistant Director, Pre-K Counts
(through 9/30/2020)



The image depicted contains models and is being used for illustrative purposes only. Janssen Biotech, Inc. © JBI 2020

Creating a future where disease is a thing of the past.

We are Janssen, the Pharmaceutical Companies of Johnson & Johnson. Bold thinkers. Big dreamers. Fearless advocates on behalf of patients. So that one day, the world's most daunting diseases will be found only in the pages of history books. Learn more at www.janssen.com.



Kelton Service Award Winner PAUL BENCIVENGO



Each year, a member of the United Way of Bucks County Board of Directors is awarded the Dr. Stanton Kelton Award. This long-standing award recognizes an individual who has made a significant contribution over the past year to the goals of the United Way of Bucks County and its mission in the community. This award honors the memory of Dr. Kelton, a compassionate and generous board member from 1966 to 1993, who was dedicated to advancing this community.



This year, Paul Bencivengo is being honored with this prestigious award. Paul joined the Board of United Way of Bucks County in 2018 and took on the role of Chair of our Nominating Committee in 2019. Paul's colleagues say, "Paul deserves recognition for his work as the chair of the Nominating Committee and for his overall high level of engagement on all board matters. He spends a significant amount of time seeking and vetting outstanding and diverse board candidates, and setting an outstanding example of how to contribute."

"Being able to support our local community and having a small part in changing someone's life is profound. It gives you real purpose in life."

- Paul Bencivengo

How did you first get involved with United Way? Why were you interested in joining the board? Former Board members Bob Caruso and Brian Jeter reached out to inform me about the possible opportunity to join the Board. I was familiar with UW Bucks at the time, but never realized the work they did behind the scenes. When I learned how much impact UW Bucks had on the local community, I knew I wanted to help and become part of the solution. Not just for programs, but for people.

What were you surprised to learn about United Way of Bucks County? Beyond the variety of support offered to countless organizations, the speed at which the United Way is able to identify a rising issue and put a solid plan in place is nothing short of remarkable. I was also moved by the UW Bucks staff and the dedication they have to their jobs and making Bucks County a better place for everyone to live. They pour their heart and soul into every program.

What makes our mission meaningful to you? Being able to support our local community and having a small part in changing someone's life is profound. It gives you real purpose in life. Beyond making a living and sharing experiences with family and friends, there's nothing better than knowing that you impacted your community for the better.

What has been the most rewarding or memorable volunteer experience you've had through United Way of Bucks County? It's very hard to select just one experience, but my daughter joined me to stuff backpacks for Stuff the Bus a couple years ago. It's critical to share these types of experiences with family and friends and to instill the importance of giving back and perpetuating service. Recently, I assisted in bringing on a new class of Board Members. These amazing professionals hit the ground running and got involved on day one.

What's best about living and working in Bucks County? Bucks County has so many unique small towns and main streets with so much in between. Residents sometimes don't appreciate what's in their own backyard. From parks and history to restaurants and the arts, there's so much to experience and learn in Bucks County. I take the role (as President/COO of Visit Bucks County) of being able to market and support our local hospitality very seriously. With 28,000 hospitality jobs, not only is it important for us to welcome visitors to Bucks County, but it's just as important to support the local economy as well.

What do you think Bucks County's greatest challenges will be in the next few years? As vaccine distribution continues and we return to a "new normal," I believe it's important for all of Bucks County to continue to work together. Collaboration to support each other will be critical. We truly are all in this life together.

What might people be surprised to know about you? I've got a green thumb for orchids and have bloomed the same ones for years. My grandparents were orchid growers in New Jersey and have a few of their plants in Longwood Gardens.

Imagine it's 5 years in the future and there's a big article about United Way of Bucks County on the front page of the newspaper. What do you want the story to be about? It would be great to read about how the United Way of Bucks County and its partners have changed so many lives. And maybe one day eliminate some of the issues of hunger or homelessness. Reading the stories and seeing the videos of how a program impacted someone's life is priceless. It gives you the motivation to keep working to find solutions and resources for the issues facing us yesterday, today, and tomorrow.



Paul Sauerbry Award Winner CATHERINE MCELROY

The Paul Sauerbry award is given annually to a volunteer who, over an extended period of time, has demonstrated commitment to the community through innovative leadership, stimulus for volunteer action by others, courage to overcome obstacles, and dedication and creativity in the development of programs to meet community needs. The award honors Paul Sauerbry, President of United Way of Bucks County from 1964 to 1974.



This year, Catherine McElroy is being honored for her dedicated service to United Way of Bucks County. Catherine has been a long-time supporter of United Way both as a leadership donor and Board Member. Catherine joined the Board of Directors in 2012 and for the past year has been serving the organization as Board Chair. Catherine's colleagues say, "Catherine has done an incredible job keeping the Board engaged and guiding the organization during this most unusual time. We've remained a cohesive unit and weathered some difficult decisions under her leadership."

"We all have a responsibility to share what we have with others, and that starts within our own community."

- Catherine McElroy

Your peers on United Way of Bucks County's Board of Directors recognize you as someone who demonstrates exceptional leadership and dedication. What inspires you to serve your community? We all have a responsibility to share what we have with others, and that starts within our own community. You don't have to look far to find an opportunity to help someone else. Whether in volunteering your time, your talent, or financial assistance, the service you offer to someone will ripple and eventually affect many others. One person at a time, we can make this a better place.

How did you first get involved with United Way of Bucks County? I was active in my workplace campaign. Several years ago, I was approached by a UW Bucks Board member who asked if I would consider joining the Board. I'm proud to have been involved with the United Way of Bucks County ever since then.

What qualities make a great board member? There are many qualities, but it comes down to seeing challenges as opportunities and being willing to take action.

United Way of Bucks County has changed a lot during your time on the board. What excites you about what's happening now – and what excites you about the organization's future? I am excited to have the board and staff members that we now have. Without exception, each person brings a unique set of skills to his or her position. The future is exciting for the same reason. This group is a team with all members working in concert with each other.

Over the past year, COVID has driven both unprecedented need and unprecedented generosity in Bucks County. As a board chair during this challenging time, what do you see as United Way of Bucks County's greatest accomplishment? Our greatest accomplishment was providing the COVID-19 Recovery Fund as a vehicle to bring together over 1,000 individual and business donors who saw that we provided a way for them to help and stepped up to do their parts during this extraordinary situation.

Why was board support so critical to accomplishing this? Credit goes to the staff for creating the fund so quickly and getting the word out to the community. The staff knows they can count on the board to support their hard work. In addition, board support provides notice that this is indeed a community effort.

What is the best way to inspire the next generation of donors, advocates, and volunteers? The best way is to show them how they can be involved. I believe most people want to help; they just need to be pointed in the right direction.

What would your fellow board members be really surprised to learn about you? I once won an archery contest.

Who would play you in a movie of your life? Thinking back to her Pretty Woman days, I would like to picture Julia Roberts in the role.

*For a community to thrive,
WE ALL MUST DO OUR PART.*

Thank you to the United Way of Bucks County for working to make sure there is food on tables, money in pockets, children in classrooms and roofs over heads.

The Bucks County Courier Times and The Intelligencer are working to do our part too. **We promise to be your truth seeker, your light shiner and your celebration multiplier.** It's why we are so proud of the work we do on topics like the Covid-19 pandemic and accountability journalism across our region. Knowledge is the power that drives a community to solve problems and achieve its collective potential.

.....

We're proud to be your partner.

Courier Times
CourierTimes.com

The Intelligencer
TheIntell.com

Making an Impact: COVID-19 RECOVERY FUND

Life changed for everyone in 2020, but we were not all equally impacted. Households with the most limited resources pre-pandemic were hit the hardest. Families without savings or a safety net needed help fast.

The Bucks County COVID-19 Recovery Fund was launched in March of 2020, just days after the first cases of the virus were identified in our community. We knew that the road to recovery would be long, but our team was prepared to help – and that is exactly what we did.



Nearly 1,000 donors stepped up to support the most vulnerable among us. Those who gave were as diverse as Bucks County: individuals, school groups, communities of faith, service clubs, and small businesses, as well as foundations and corporate partners, all contributed.

Forty of our Member Agencies – vetted partners who maintain close partnerships with United Way – used COVID Recovery funds to address the most pressing community needs. In the early stages, the focus was on access to food, shelter, personal protective equipment, and disinfecting supplies.

Later, agencies used funds to adapt their models to serve clients during the crisis. From car shields and sanitizing supplies to equipment for telehealth and HIPAA-compliant

digital platforms, COVID grants helped clients stay connected to critical services.

It may take a long time for our community to fully recover from COVID-19, but United Way will be there every step of the way, connecting people who care with people who need care.

If you want to help support meaningful, lasting change that impacts the entire community, visit www.uwbucks.org/donate.



Photo by Melina Walling, Bucks County Courier Times

WHO WAS HELPED?

- The COVID Recovery Fund provided 24/7 nursing for high-risk residents at **Libertae**, a long-term residential recovery support center. One Libertae resident shared, “During my stay at Libertae, my premature son and I contracted COVID. I am grateful we were at Libertae during this pandemic. The medical care we received from the nursing team while we were in isolation was amazing and there honestly is no other place I would have rather been.”
- J. asked for help “in desperation.” She lost her job due to COVID-19. Though she had some money saved, it was not nearly enough to support her two grandchildren while she waited for unemployment benefits. The **Salvation Army Levittown Corps** was able to provide her with the help and support she needed.
- **Penndel Mental Health Center** used resources to help those who were homeless and did not wish to enter a shelter. Street Outreach workers provided tents, non-perishable food, and personal hygiene items. PMHC also secured personal protective equipment to help their staff assist clients in-person with medical and mental health support.
- Funding allowed **Bucks County Opportunity Council** to provide additional support to 12 high-volume food pantries throughout the county. Each pantry received flexible funding for the purchase of food, including meats and dairy items. BCOC also used funds to purchase and distribute 12,000 eggs to pantries throughout Bucks County.

\$482,897*

COVID-19 Recovery funds raised and distributed.

990

Number of donors who gave to the COVID-19 Recovery Fund to support our community.

56,076

Number of people served through the COVID-19 Recovery Fund.

**As of 3/31/2021 all funds have been expended.*



Photo by Melina Walling, Bucks County Courier Times

ORGANIZATIONS SERVING BUCKS COUNTY THROUGH THE BUCKS COUNTY COVID-19 RECOVERY FUND

A Woman's Place	Coalition to Shelter and Support the Homeless	Livengrin Foundation	Rolling Harvest Food Rescue
Advocates for Homeless & Those in Need (AHTN)	The Council of Southeast Pennsylvania, Inc.	Maternity Care Coalition	Salvation Army Lower Bucks Corps
Advocates for the Homeless of Upper Bucks	Credit Counseling Center	Merakey	TLC Child Care Center
Big Brothers Big Sisters of Bucks County	Emergency Relief Association Food Pantry	NAMI Bucks County	Valley Youth House
Bucks County Association for the Blind and Visually Impaired	Family Service Association of Bucks County	Network of Victim Assistance (NOVA)	Vita Education Services
Bucks County Children & Youth Social Services	Good Friends, Inc.	No Longer Bound, Prevention & Training Services	Worthwhile Wear, Inc.
Bucks County Housing Group	The Greater Philadelphia Diaper Bank	One House at A Time	YMCA of Bucks County
Bucks County Opportunity Council, Inc.	The Ivins Outreach Center	Penn Foundation	YWCA of Bucks County
Catholic Social Services	Keystone Opportunity Center	Penndel Mental Health Center	
Children's Developmental Program, Inc.	Lenape Valley Foundation	Quilts for Kids, Inc.	
	Libertae, Inc.		
	LifeSpan Child Care Center		

For more information visit www.uwbucks.org/covidgrantswork.

If you want to help support meaningful, lasting change that impacts the entire community, visit www.uwbucks.org/donate.

THANK YOU TO OUR RECOVERY FUND CHAMPIONS

From the bottom of our hearts, thank you! We are proud of our community and grateful for every business and individual that has stepped up to help in a true and urgent time of need.

Business, Foundation, and Community Partners

100+ Women Who Care Bucks County	Newtown Business Association
25 th Century Foundation	PECO
Barra Foundation	Penn Community Bank
BB&T now Truist	PNC Financial Services Group, Inc.
Blossom Yoga Studio	Residents of Ann's Choice
Bucks County Chapter of Jack and Jill of America, Inc.	ServiceNow
Bucks County Foundation	Shoprite of Hunterdon County
Dow Chemical	Simon & Jane Hallett
Fegley Law Firm	Soap for Support
Foundations Community Partnership	The Albert W Bader Foundation, Inc.
Janssen Pharmaceutical, Inc.	The Grundy Foundation
Johnson & Johnson, Inc.	United Way of Bucks County
M&T Charitable Foundation	Vistra Energy
Microwave Innovations, Inc.	Wells Fargo

Individual Donors

Thank you to the nearly 1,000 individual community members who generously supported the Bucks County COVID-19 Recovery Fund and our neighbors in need during an extremely difficult year.



Partnering with Penn Community Bank

Penn Community Bank's support was crucial in launching the Bucks County COVID-19 Recovery Fund. Leadership at Penn Community Bank did not hesitate to help establish the fund with a donation of \$25,000 to match United Way of Bucks County's initial investment. We are grateful for their support during a very challenging time.



91

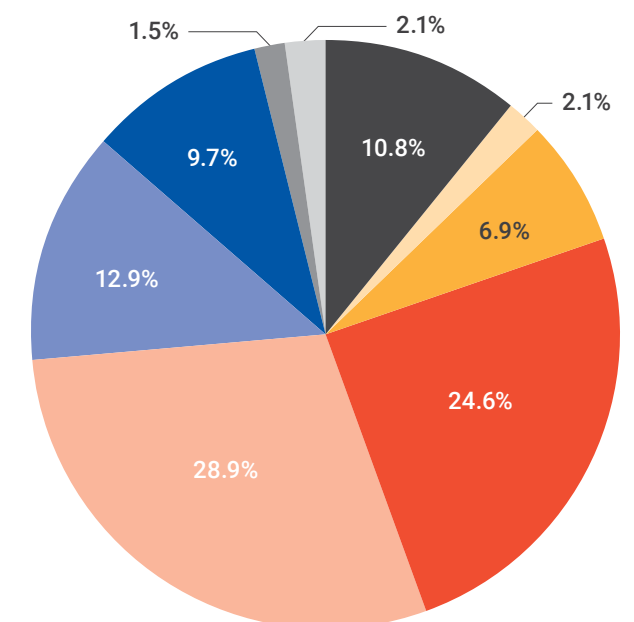
Grants provided through the COVID-19 Recovery Fund.

40

Recipient agencies utilized grants to better serve our community during the pandemic.

28%

Percentage of people helped who are children under the age of 18.



How Funds Were Dispersed

Home Basics	Safety and PPE
Behavioral Health Supports	Shelter
Education	Technology
Food	Transportation
	Utilities

Making an Impact: HELP CENTER (HEALTHY EATING & LIVING PARTNERSHIP)



Moving into a new apartment is a milestone for people overcoming homelessness. Unfortunately, when they do, they often have nothing to furnish their new home – no dishes, no sheets, no kitchen table, no bed. And for families who are barely making ends meet, securing basics like cleaning supplies, personal hygiene items, and home goods is literally impossible at times. That is where the new HELP Center comes in, providing essentials – completely free of charge – to local families through a dignified personal shopping experience.

The HELP Center – a Healthy Eating and Living Partnership – is a collaboration between three nonprofit agencies: Bucks County Opportunity Council, St. Mary Medical Center, and United Way of Bucks County. Penn Community Bank provides generous support for the project.

Located in Bristol, HELP is an 8,000 square foot warehouse, distribution center, and “shop” for our gifts in-kind program (formerly “The Shed”). With a commercial loading dock and expansive storage capability, the center allows UW Bucks to accept large corporate donations– full tractor trailer loads – of home goods and consumables.

Beginning in April 2020, we received and distributed truckloads of pandemic support from companies like Colgate-Palmolive,

Kimberly-Clark, and Cora. Local retailers like Amazon, Walmart, and Bed Bath & Beyond regularly donate a range of brand-new items, all of which reach the people who need them most. Our partners use the space for food storage and distribution through food pantries and weekend backpack programs.

Each month, hundreds of new people “shop” with us for the things they need. For families struggling financially, it is a game changer. “Our family has never struggled before this pandemic, so this is all so new to me. We are married with a three-year-old and a one-year-old, and I’m currently pregnant,” explained a HELP Center shopper. She noted that through the HELP Center, she was finally able to get socks for herself instead of putting them back because her children need diapers more.

\$1,260,000

Value of home goods, furnishings, PPE, cleaning supplies, and other essentials that reached local families in 2020 – providing more than a little HELP.



MAKING AN IMPACT: HELP CENTER

\$28,343

Value of HELP Center volunteer hours

492

Households visited the center between October and December 2020

8,196

Household items distributed to individuals and families

61

Organizations supported by the HELP Center



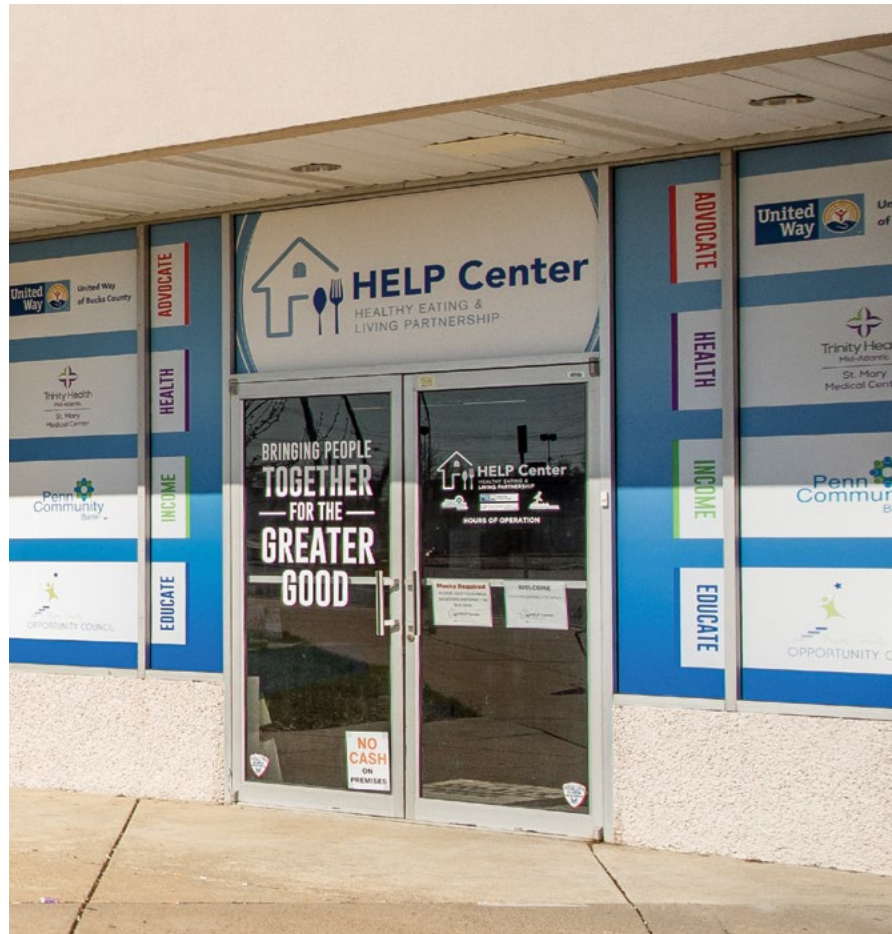
United Way Van

The team at SUEZ Water Technologies & Solutions are champions for United Way of Bucks County year-round. In a time of crisis, their unwavering commitment to our community shined through. SUEZ supported the purchase of our United Way Van. Now we can pick up and process donations more efficiently.



Distribution of Corporate Donations Facilitated Through the HELP Center

- **73,728** rolls of toilet paper (Kimberly Clark and Cottonelle)
- **88,000** toothbrushes (Colgate)
- **21,696** bottles of body wash (Softsoap)
- **252** coats (Coats for Kids, Auto Dealers CARing for Kids, and the Automotive Training Center)
- **1,800** children’s face masks and **2,500** adult face masks (John Kennedy Ford and Sam’s Club)
- **32,400** packages of feminine care products (Cora)



Making an Impact: EMERGENCY NEEDS & FINANCIAL STABILITY



CHALLENGES

- Now more than ever, struggling families are having trouble making ends meet.
- Transportation is critical to maintaining self-sufficiency, but the costs of operating and maintaining a vehicle in the suburbs can be expensive.
- Unexpected bills, a car breakdown, or getting sick and missing work can be the difference between getting by and going under.

SOLUTIONS

- Provide emergency assistance with basic needs, like utilities and housing.
- Provide other financial supports in the form of holiday help and back-to-school supplies.

- Prioritize support for transportation so people can get to and from their jobs.
- Remove other barriers to employment, like short term childcare or internet access for those working from home.

GOAL

Provide targeted assistance to support self-sufficiency, employment, and learning.

WHAT'S NEXT

Work with partners to make sure transportation is not a barrier for individuals who are seeking or trying to maintain stable employment.



1,804

Number of older kids and teens who received gift cards through the Holiday Gift Card Drive.

12

Families have received a reliable, pre-owned vehicle through Let's Get to Work since its launch in 2019.

276

Number of requests that were filled for assistance for rent, utilities, or transportation.

PROGRAMS

Emergency Needs Fund

The Emergency Needs Fund is a collaborative effort that provides help when residents need it most. Funds are used to assist with small car repairs, gasoline, auto insurance, and other barriers to employment.

Let's Get to Work

In Bucks County, a reliable personal vehicle is critically important to gaining and maintaining employment. Let's Get to Work bolsters working families by providing a stable car when that is their main roadblock to steady employment.

Holiday Gift Card Drive

When money is tight around the holidays, it's often the older children that go without. The Holiday Gift Card Drive makes sure that teens and tweens from families that are struggling financially can still have a bright holiday.



Making an Impact: FOOD ACCESS



CHALLENGES

- More people in Bucks County are food-insecure because of the COVID-19 pandemic.
- Finding safe ways to provide food assistance that don't require direct contact.
- Feeding vulnerable populations – particularly children and the elderly – who experience serious health issues when they don't get enough to eat and don't have access to nutritious foods.

SOLUTIONS

- Transform the Fresh Connect farmers market into an emergency food distribution program.
- Invest in new and existing programs that deliver food to the elderly and the homebound.
- Partner with like-minded organizations to establish a shared storage and distribution center.

GOAL

Increase access to and availability of nutritious food.

WHAT'S NEXT

Increase food supplies by identifying untapped resources and new partnerships.

Providing food support is more important than ever. The economic impact of COVID-19 has made over 25,000 additional people food-insecure in Bucks County. UW Bucks is ensuring that hard hit families still have nourishing food on their tables as they struggle to recover and work toward a better future.



PROGRAMS

Bucks Knocks Out Hunger

COVID-19 made us modify our biggest hunger-relief campaign in 2020, but the resulting county-wide food drive and fundraiser provided more support to the community than ever before.

Fresh Connect

This free, mobile farmers market operates in three locations every week: Bristol, Ottsville, and Warminster. In 2020, Fresh Connect was transformed into an emergency food distribution site and more than tripled the number of households for which it provided food.

HELP Center

The Healthy Eating and Living Partnership is an 8,000 square foot warehouse used to distribute things people need most. Thanks to this collaborative effort, we are reaching even more people in Bucks County with the home goods, consumables, and food they need.



22,500

Pounds of nonperishable food collected at the BKO Hunger food drive in 2020.

10,339

Unique households served at Fresh Connect in 2020.

107,000

Number of people who received donations distributed through our HELP Center partnerships.

Making an Impact: EDUCATION



CHALLENGES

In Bucks County:

- 69% of eligible children do not have access to publicly funded Pre-K.
- The cost of early care and education for just one child averages over \$10,000 per year. For low-income, working parents, that is often their biggest expense.
- Nearly 3 out of 4 parents depend on childcare to be able to work.
- Children who have economic, developmental, and other disadvantages are at risk of school failure.

SOLUTIONS

- Pre-K scholarships for low-income families help children get on the path to academic success and help parents get to work so they can support their families.
- Decades of research shows that while all kids benefit from early education, low-income children show the greatest gains. A recent study confirmed that children who participate in Pre-K Counts make significant progress in literacy and math skills.
- Public and private funding for early care and education provides short-term and long-term benefits to children, families, and communities.

GOAL

Increase access to high-quality early care and education.

WHAT'S NEXT

Expand both public and private support for Pre-K scholarships and continue to expand access to educational STEM opportunities.

PROGRAMS

Pre-K Scholarships: Through the PA Pre-K Counts program, the Educational Improvement Tax Credit, and targeted fundraising events, UW Bucks provides Pre-K scholarships to families in need. This financial assistance allows young learners to access high-quality Pre-K programs throughout the county. Our flexible scholarships support working families who may not qualify for other sources of financial help.

STEM Early Education: In partnership with the Bucks County Children’s Museum, we provided STEM kits to 1,000 young children in need. The kits included an activity guide and materials for children to explore Science, Technology, Engineering, Math, and other topics.

The Barnes & Noble – Oxford Valley Annual Book

Drive: This drive provides books to families and ensures that literacy begins in the home. In 2020, Barnes & Noble donated more than 1,000 books, which we distributed to children in need through our Pre-K partner programs.

Stuff the Bus: Our annual, community-wide school supply drive provides over 3,000 children in need with a backpack filled with school supplies. Stuff the Bus ensures that kids start the school year with the supplies and confidence they need to succeed. In 2020, in addition to backpacks, we provided each family with a box of cleaning and sanitation items to address the COVID-19 pandemic. Backpacks also included a mask, hand sanitizer, and earbuds for online learning.

iSTEAMM: This one-day conference encourages young men and women in grades 7-8 to pursue careers in Science, Technology, Engineering, Arts, Manufacturing,

and Math (**STEAMM**). People working in STEAMM careers present hands-on lessons for the conference attendees, giving them a glimpse of what a STEAMM career really looks like. In 2020, with the help of our partners at the Bucks IU, we shifted the iSTEAMM conference to an online platform. iSTEAMM was hosted by Miss America 2020, Camille Schrier. Schrier shared live chemistry demonstrations and spoke about the importance of STEM education.

Bet on Success: Due to the COVID-19 pandemic, we were unable to host our Bet on Success casino night fundraiser. The proceeds from this event provide flexible scholarships for early childhood education and care. From the bottom of our hearts we want to thank our sponsors, Penn Community Bank, Comcast, and Suez, for sticking with us and applying their support to Pre-K scholarships.

\$2,024,736

Investment in Pre-K education, including Pre-K Counts, CARES funding, and Pre-K scholarships.

\$32,460

Value of additional financial and in-kind resources provided to Pre-K children and their families.

1,461

Number of books distributed to Pre-K children and their families.

Pre-K Scholarships: Much Needed COVID Relief for Families

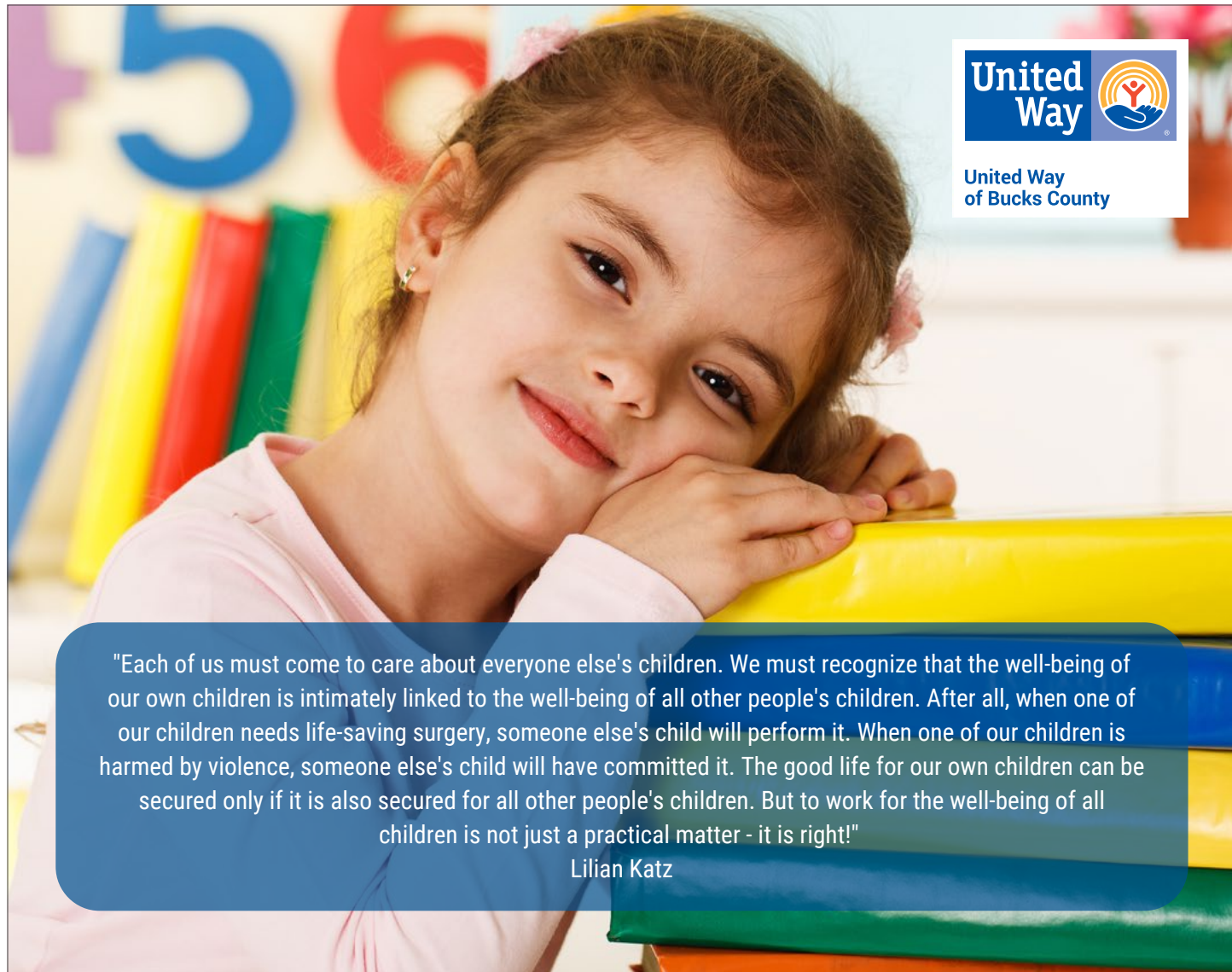
Amy and Andrew faced some unexpected and difficult challenges as schools remained closed during the COVID-19 pandemic. Fortunately, Andrew was able to work full-time as Amy continued taking online classes. But while Amy was home, she needed to complete her own course work, help their 9 year-old son with his remote school work, and care for their 3 year-old daughter Julia. Juggling these responsibilities was not sustainable and Amy was worried about Julia’s behavior. The therapy Julia was getting at home was not enough – she needed to be in a structured educational program.

Amy found a Pre-K program that would address Julia’s needs, but she could not afford it and no financial assistance was available. The director reached out to our United Way, and we were able to help by providing a Pre-K scholarship for Julia. Since she enrolled in our Pre-K partner program, Julia’s behavior has improved. She has learned coping skills and how to transition from one activity to another. Julia is excited to go to school and is showing a lot of progress: she’s more verbal and is doing very well with knowing ABC’s and shapes. Amy has also noticed that Julia seems more pleasant and happy when she’s home.

Amy is grateful and optimistic. “Sometimes it’s hard to ask for help. But, a scholarship really helps people like me. It allows me to finish my courses, help my older child with school work, and make sure both our kids have what they need. I can make better choices and have the opportunity to make things better for me and my family.”

While Julia continues to learn and grow in Pre-K, Amy is staying on her path to earning an Associate’s Degree in a healthcare program. For this family, the 2-generation benefits of a Pre-K scholarship are clear: The parents are more financially stable, mom is advancing her career, and the children are getting a good education.





"Each of us must come to care about everyone else's children. We must recognize that the well-being of our own children is intimately linked to the well-being of all other people's children. After all, when one of our children needs life-saving surgery, someone else's child will perform it. When one of our children is harmed by violence, someone else's child will have committed it. The good life for our own children can be secured only if it is also secured for all other people's children. But to work for the well-being of all children is not just a practical matter - it is right!"

Lilian Katz

Thank You To Our Early Childhood Education Supporters

2020 Pre-K Partner Programs

Bright Beginners Academy
Bucks County Community
College Early Learning Center
(through June 30, 2020)
Children's Developmental
Program
Children's Village at Doylestown
Hospital
(through June 30, 2020)

Elbow Lane School
Jolly Toddlers
Land of Children
LifeSpan School & Day Care
Pennridge Christian Academy
Right Steps-Churchville
Teddy Bear Academy
TLC Child Care Center
Trinity Christian Academy

William Penn Center Preschool
YMCA of Bucks County

2020 Pre-K EITC Contributors

BB&T now Truist
Key Bank
Universal Health Services, Inc.
PPL Electric Utilities



MAKING AN IMPACT: EDUCATION

SUPPORTING THE NEEDS OF EDUCATORS YEAR-ROUND

Closing the Digital Divide: When Morrisville School District made the call last fall to keep their students virtual into the new year, they needed support to help ensure educational equity among their students. United Way provided a grant in the amount of \$15,000 that helped the district address the shortage of devices for its roughly 1,000 students.

Keeping Classrooms Safe: United Way of Bucks County purchased 20,000 pairs of disposable gloves for science classrooms at Strayer Middle School in the Quakertown School District. This allowed students to safely share materials and dig into hands-on activities without the fear of contamination. Strayer Middle School was also awarded \$5,000 to put toward STEM Education through a raffle drawn at the iSTEAMM Conference.

STEM Education: Every school that participated in the 2020 Virtual iSTEAMM Conference was entered into a raffle to win one of two prizes: \$5,000 to put towards their school's STEM education or a one-week residency of the Bucks IU's Mobile Fab Lab at their school. These prizes were made possible by generous sponsors: PECO, Comcast, Langan Engineering, Penn Community Bank, PPL Electric Utilities, Solvay, SUEZ Water Technologies & Solutions, and UGI Electric Utilities.

Winners of the raffle prizes included Bristol Borough School District, winners of the one-week residency of the Bucks IU's Mobile Fab Lab; and Strayer Middle School in the Quakertown School District, winners of \$5,000 towards STEM Education. Strayer staff hope to use the prize to help students design and construct a bird blind on school grounds in order to take advantage of the wildlife area on site.



Making an Impact: HOUSING & HOMELESSNESS



MAKING AN IMPACT: HOUSING & HOMELESSNESS

CHALLENGES

- COVID-19 drastically increased the number of families facing eviction and homelessness.
- Capacity at shelters is limited due to social distancing.
- There is a waiting list to access emergency shelter.

SOLUTIONS

- Use coordinated "street outreach" to connect with the most vulnerable people in our community and get them on a path to stable housing.
- Focus on homelessness prevention, to get ahead of the problem.
- Emergency financial assistance helps people overcome one-time barriers and remain in their homes.

GOAL

Make homelessness rare, brief, and nonrecurrent.

51 Clients referred to rapid rehousing.

389 Number of individuals served through the Street Outreach program in 2020.

WHAT'S NEXT

Street Outreach is key to triaging those who are literally homeless and being a lifeline until they are connected with housing resources. Workers not only provide information and guidance but also distribute food and vital supplies.

At the same time, we focus "upstream," to understand what causes homelessness and how to intervene before it occurs. Eviction prevention is a sound investment that prevents the disruption of lives, costs less than a stay at a shelter and subsequent re-housing, and helps families avoid the psychological trauma that comes with eviction. It also keeps an eviction off a tenant's housing record, so they won't be disqualified from future housing options.

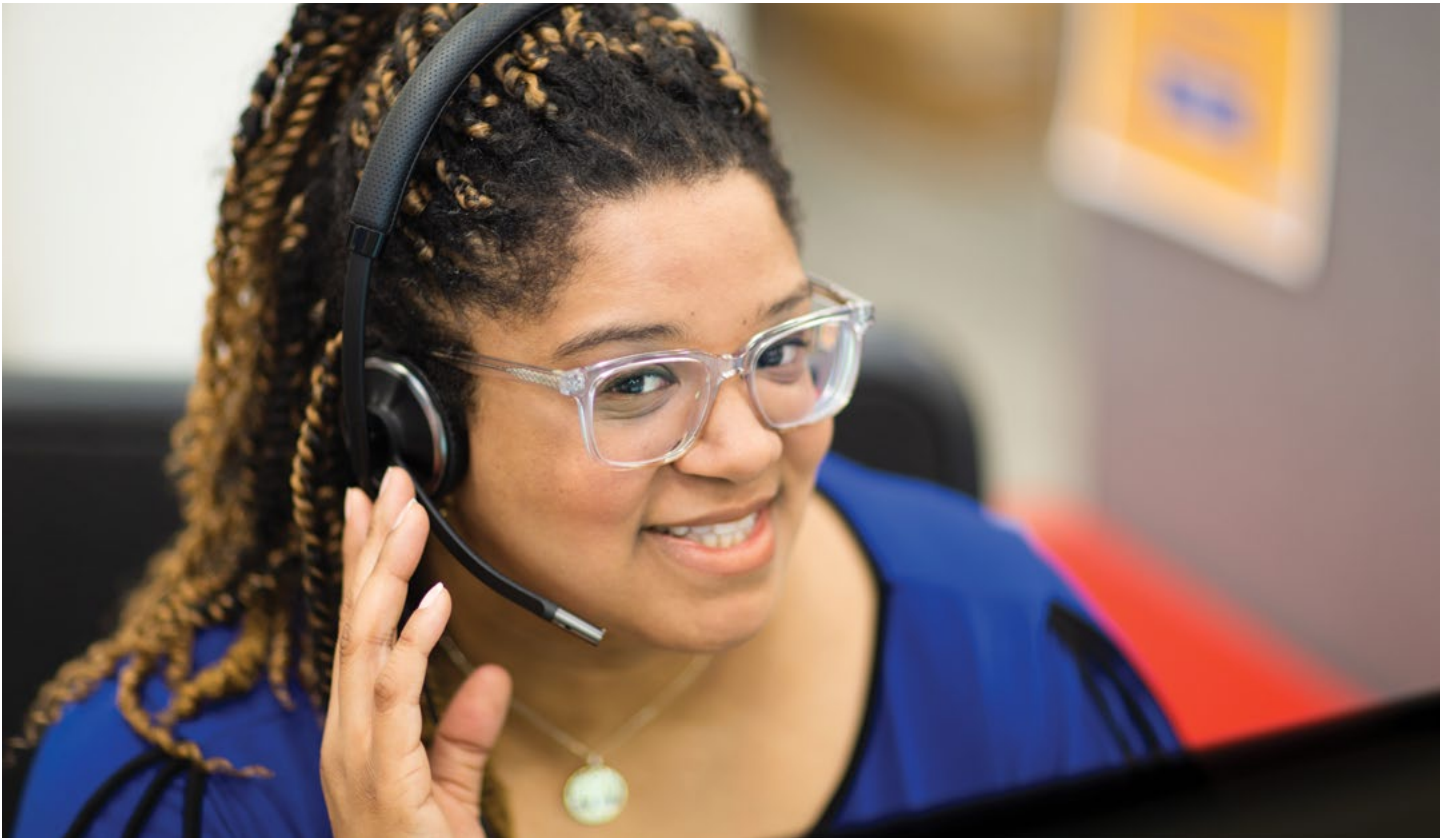


Dan's Story

Dan, his wife, and their two children needed help. They were homeless and residing in a motel. Street Outreach met with them, verified their needs, and connected them with services. Dan and his family enrolled in Rapid Rehousing through Bucks County Opportunity Council and moved into a new apartment in October of 2020. The family needed lots of items for their new home and were referred to the United Way's in-kind gift program at the new HELP Center to shop for furnishings and other household essentials.

The family needed reliable transportation. They received a pre-owned car through United Way's Let's Get to Work program. Dan is now employed full time, enrolled in BCOC's Economic Self-Sufficiency program, and gives back by volunteering his time in our community.

Making an Impact: 2-1-1



CHALLENGES

Finding the right help for an unexpected problem or crisis can be more difficult than you might think. While there may be resources available, a person can become lost in an unfamiliar maze of programs and services without a centralized system to help. This can be frustrating and time-consuming and may ultimately lead people to abandon their search.

SOLUTIONS

- 2-1-1 makes the connection, linking individuals in need with the closest resources.
- 2-1-1, United Way’s free information and referral helpline for health and human services, is available 24/7, 365 days a year. Certified resource navigators provide information in 140 different languages and it’s always confidential.
- Trained experts utilize a comprehensive, up-to-date database of community-based organizations, government agencies, and other supportive services in their community. 2-1-1 is available by phone, text, chat, and online self-guided search.

- 2-1-1 makes it easier for Bucks County residents to get the information they need to access critical programs and services, become more self-sufficient, and move toward a brighter future.

GOAL

Assist those in need to find health and human service resources available in Bucks County.

WHAT’S NEXT

Expand awareness of 2-1-1, so it becomes a familiar tool for people in our community. More callers will mean more connections.



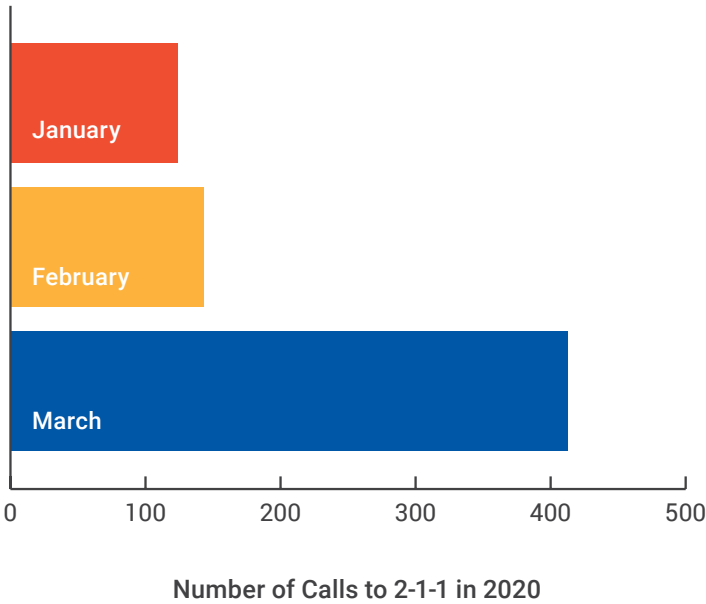
Get Connected. Get Help.™



MAKING AN IMPACT: 2-1-1

2-1-1 AND COVID-19

Use of 2-1-1 tripled early in the pandemic. COVID-19 concerns were the top reason people called 2-1-1 in March 2020.



3,840

Calls received in Bucks County in 2020

TOP 4

Most common needs of callers in 2020:

1. Housing & Shelter (43%)
2. Food (10.5%)
3. Utilities (12.2%)
4. Healthcare & COVID-19 (10.1%)

Making an Impact: DIVERSITY, EQUITY, AND INCLUSION

2020 accelerated conversations on diversity, equity, and inclusion in an extraordinary way. Although many businesses and organizations in our community were already viewing their work through an equity lens, events of the past year demanded that we all do a better job. At United Way of Bucks County, that means coordinating our efforts – and sharing tools, resources, and educational opportunities as widely as possible.

It is a complex topic. Equity – racial equity in particular – is both a journey and a destination. Our goal is to be a community where race is not a predictor of socioeconomic success and everyone has what they need to thrive, regardless of zip code. Our work toward those goals is focused on three key areas.



EDUCATING OURSELVES AS LEADERS: BOARD AND STAFF

Colleen Doll and Tiffany Thomas-Smith, co-chairs of United Way of Bucks County’s Diversity, Equity, and Inclusion (DEI) committee, have set bold goals for the coming year.

First, their committee developed a public-facing DEI statement to guide the organization:

- **We welcome** that every person brings a unique perspective and experience to advance our mission and progress our fight for the health, education, and financial stability of every person in every community.
- **We believe** that each United Way community member, donor, volunteer, advocate, and employee must have equal access to solving community problems.
- **We strive** to include diversity, equity, and inclusion practices at the center of our daily work.
- **We commit** to using these practices for our business and our communities.

Using these guiding principles, the committee oversees ongoing board and staff DEI training. They also work closely with staff and board to ensure community investments are truly aligned with equity goals.

SUPPORTING OUR NONPROFIT NETWORK

United Way of Bucks County regularly convenes nonprofit executive directors and staff leaders to discuss best practices, share materials, and coordinate our efforts.

About 30 Member Agencies participate. They range in size from small, grassroots, all-volunteer organizations to large nonprofits with hundreds of employees.

The objective is to ensure that all local nonprofits, regardless of size, can advance their equity goals. In addition to sharing resources, we are making training available – free of charge – to all board and staff at smaller Member Agencies through the Bucks-Mont Collaborative.



PROVIDING RACIAL WEALTH GAP SIMULATIONS

United Way of Bucks County, YWCA of Bucks County, and Bucks County Opportunity Council are collaborating to bring Racial Wealth Gap Learning Simulations to our community.

The interactive workshop helps people understand racial inequality at the structural level and how it connects with other social justice issues.

Participants learn how federal policies have created systemic inequalities in many areas, like property ownership and education, and how these policies increase hunger and poverty in communities of color. The simulation was co-created by Bread for the World Institute and NETWORK.

“Our hope is that the discomfort of this historical journey results in both action and advocacy.”

SUEZ Water Technologies & Solutions, a global company headquartered in Trevose, PA, was the first large company to host a simulation for staff.

Karen Johnson-Susko, SUEZ WTS Global Customer Care Director and United Way board member shares, “The Racial Wealth Gap Simulation was a powerful experiential learning program that put a spotlight on the policies that have continued the cycle of oppression and systemic racism in the US. The over 125 Suez WTS employees in attendance are still talking about this event and how we can further level the playing field for all people.”

She acknowledges that aspects of the simulation are challenging and emotional. “Our hope is that the discomfort of this historical journey results in both action and advocacy,” she says.

Is your business, group, faith-based organization, or club interested in hosting a Racial Wealth Gap Simulation in 2021? There is no charge through the end of 2021 and limited openings are still available. Contact Katie Matarazzo at katiem@uwbucks.org or (215) 949-1660 ext. 101.

United Way of Bucks County BY THE NUMBERS

100%

All of your contributions – time, talent, and treasure – stay here and directly benefit programs in Bucks County, and every program we fund is focused on sustainable change.



107,000

Number of people who received donations distributed through our HELP Center partnership, including toilet paper, hygiene products, sanitizer, and other essential items in limited supply during the early days of the pandemic, in addition to home goods, bedding, and food.



\$1,260,000

Value of home goods, furnishings, PPE, cleaning supplies, and other essentials that reached local families in 2020 through the HELP Center.



1,804

Number of teens helped through the Holiday Gift Card Drive.



55,000

Bucks County residents reached by the 91 COVID-19 Recovery Grants awarded to 40 agencies totaling \$482,897.*



1,209,002

Pounds of produce distributed through Fresh Connect.



247

Number of children who received a high-quality Pre-K education through UW Bucks' Pre-K Counts grants and Pre-K scholarships.



\$44,924

Value of volunteer time donated to Bucks County through UW Bucks.



3,421

Number of kids in need who received a backpack stuffed with school supplies. For the first time, their back-to-school essentials included masks, hand sanitizer, earbuds for virtual learning, and cleaning supplies for families.

\$1,053,986

In FEMA Emergency Food and Shelter funds distributed in Bucks County.



United Way of Bucks County

STATEMENT OF OPERATIONS (Pre-audit)

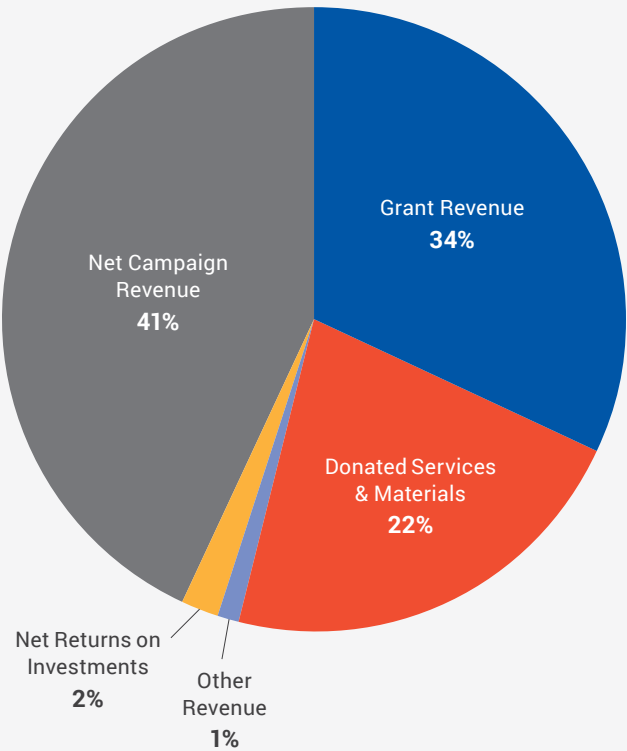
For the Year Ended 12/31/2020

PUBLIC SUPPORT AND REVENUE

Net Campaign Revenue	
Gross Campaign	2,578,832
Less: Donor Directed Gifts	(39,672)
Less: Provision for Uncollectibles	(95,395)
Net Campaign Revenue	2,443,765
Grant Revenue	2,026,925
Donated Services & Materials	1,282,888
Other Revenue	18,667
Net Returns on Investments	134,593
Public Support and Revenue	5,906,838

PUBLIC SUPPORT & REVENUES, BY SOURCE

as a percentage of Total Revenue

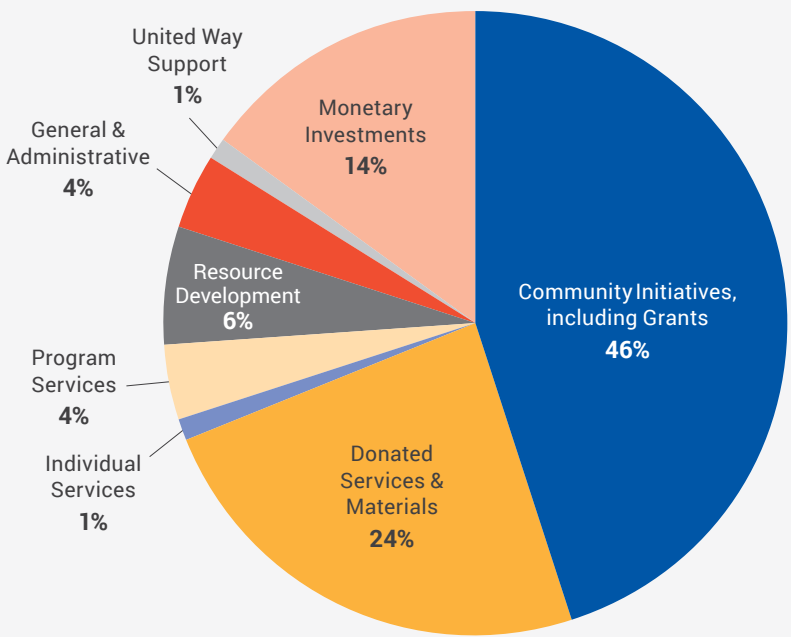


EXPENDITURES

Community Impact Expenses	
Distributions to Bucks County	788,917
Less: Donor Directed Gifts	(39,672)
Monetary Investments	749,245
Community Initiatives, including Grants	2,498,892
Donated Services & Materials	1,282,888
Individual Services	47,977
Program Services	206,811
Full Investment in Bucks County	4,785,813
Resource Development	332,199
General & Administrative	236,715
United Way Support	46,725
Expenditures	5,401,452
Net Surplus	505,386

EXPENDITURES

as a percentage of Total Expenditures



United Way of Bucks County

EXPENDITURES MADE EASY

Each year, our Statement of Operations and Form 990 provide insight into what we raise and what we spend. They are important for transparency but can be hard to interpret when they are just numbers on a page.

We're here for you, Bucks County. Here is a quick guide to our major "expenditures" in 2020:

\$880,000

Monetary Investments

This covers many programs in Bucks County, like **Fresh Connect**, our free, mobile farmers market; **Street Outreach**, getting people who are literally homeless on the path home; **Emergency Needs**, for immediate help with rent, utilities, transportation, and necessities; along with other investments.

In 2020, the **COVID-19 Recovery Fund** was started. \$374,000 of the dollars raised were distributed to member agencies to help people impacted by the virus. The balance of the funds were distributed by March 31, 2021 (see pages 12-15). The food distributed through **Bucks Knocks Out Hunger**, supplies distributed through **Stuff the Bus**, and **Holiday Gift Cards** for teens in need are also captured here.

\$40,000

Donor Directed Gifts

Locally and through the larger United Way network, we raise money that goes directly to nonprofits that make a local impact. These gifts are earmarked by the donor for a specific program or service.

\$2.5 MILLION

Community Initiatives, Including Grants

This goes to **Pre-K Scholarships** for low- and moderate-income families. We invest heavily in this area because this is often a family's largest expense – and it is one of the best investments we can make. Children who get scholarships to attend our high-quality Pre-K partner sites are prepared to succeed when they enter Kindergarten, giving them the best chance at long-term academic success. Plus, these scholarships mean that parents can get to work and provide for their family.

\$1.28 MILLION

Donated Services and Materials

Distributed through our **HELP Center** in Bristol (see pages 16-19), our "donated materials" are almost entirely the value of **home goods**, which go to **families in need**. For example, families who are moving from the homeless shelter to a place of their own can "shop" for necessities with their case worker. They can select linens, kitchenware, and many other items. Thanks to our relationships with local retailers and a program called Good 360, all items are brand new (usually discontinued or open box returns).

\$48,000

Individual Services

We chair the local board and act as fiscal agent for the federally funded **Emergency Food and Shelter Program**. Each year, the amount of funding allocated to nonprofits in Bucks County varies. We ensure that funds are distributed as quickly, fairly, and efficiently as possible. Our work in this area provided over \$1 million in funding to local partners in 2020.

\$207,000

Program Expenses

Any additional costs to run the programs that are directly related to our mission fall into this category. Our team focuses on **hunger relief** and improved nutrition; helping to ensure that **homelessness** in Bucks County is brief, rare, and non-recurring; improving the quality of – and access to – **early education**; and helping our nonprofit partners **coordinate services**, as needed.



When other banks
lose focus, you can count
on us to *hit the mark*.

No Name Changes. No Mergers.
*Your Community Bank for
more than 155 Years.*

THE *First* NATIONAL BANK
& TRUST CO. OF NEWTOWN

215-860-9100 | fnbn.com
12 Branches in Bucks County



United Way of Bucks County Member Agencies

United Way of Bucks County brings people together for the greater good. Our partners currently include 60 nonprofit member agencies, hundreds of business partners, and countless community partners. We are proud of our partnerships because getting things done in Bucks County is a team effort. We believe that the more perspectives you have, the more ways you can find to approach the issues that destabilize our community. That's why we bring together a diverse coalition of partners, using our collective energies to shape an agenda for change.

By rallying people around a shared sense of purpose, we can direct our time, efforts, and funds to the programs that best address local issues. We can direct our resources to where they will make the most difference. We invite you to take a look at our partners – and know that every partner, business, or agency works together to make this a stronger, healthier community. These are the people who LIVE UNITED.



A Woman's Place	CO-Mans, Inc.	Lenape Valley Foundation	Salvation Army, Lower Bucks Corps.
Advocates for Homeless & Those in Need (AHTN)	Coalition To Shelter and Support the Homeless	Libertae, Inc.	Single Parent Fellowship
Advocates for the Homeless of Upper Bucks	Credit Counseling Center	LifeSpan Child Care Center	The Children's Home Society of New Jersey
Aldie Foundation, Inc.	Diakon Child, Family, and Community Ministries	Livengrin Foundation	The Council of Southeast Pennsylvania, Inc.
Big Brothers Big Sisters of Bucks County	Easterseals of Southeastern Pennsylvania	Lower Bucks Community Centers, Inc	The Fiarria Project
Bucks County Association for the Blind and Visually Impaired	Emergency Relief Association Food Pantry	Maternity Care Coalition	The Ivins Outreach Center
Bucks County Children and Youth Social Services	Family Promise of Lower Bucks	Mental Health Partnerships	TLC Child Care Center
Bucks County Housing Group	Family Service Association of Bucks County	Merakey	Trinity Christian Academy
Bucks County Opportunity Council, Inc.	Good Friends, Inc.	NAMI Bucks County	Twilight Wish Foundation
Bucks County Workforce Development Board	The Greater Philadelphia Diaper Bank	Network of Victim Assistance (NOVA)	Valley Youth House
Bucks for Kids	Habitat for Humanity of Bucks County	No Longer Bound, Prevention & Training Services	Vita Education Services
Caring For Friends	Hands Holding Hearts	One House at a Time	Welcoming The Stranger
Catholic Social Services	Keystone Opportunity Center	PA CareerLink	Worthwhile Wear, Inc.
Children's Developmental Program, Inc.	Legal Aid of Southeastern Pennsylvania-Bucks County Division	Penn Foundation	YMCA of Bucks County
		Penndel Mental Health Center	YWCA of Bucks County
		Quilts for Kids, Inc.	
		Rolling Harvest Food Rescue	

Supporting neighbors.
Building community.

For more than 145 years, BB&T has earned the trust of our clients with a local approach to banking. Understanding the fabric of our community. Being there when our neighbors need us. Encouraging what makes our community unique. That's why we're proud to support the United Way of Bucks County.



| Now Truist

Chad Leyden, Market President
610-263-8638 | Chad.Leyden@BBandT.com

Truist Bank, Member FDIC. BB&T now Truist. To learn more, visit [BB&T.com/Truist](https://www.bbandt.com/truist)

BANKING | INSURANCE | INVESTMENTS

THANK YOU To Our Partner Companies & Organizations

Special thank you to the companies and organizations **listed in blue**. These businesses help our community by hosting an employee giving campaign in their workplace each year.

25th Century FDN Agency

AAA Mid Atlantic

Abbott Laboratories

Abbvie

Addisville Reformed Church
Women

Advanced Polymer Coatings

Advertising Specialty Institute

Aetna US Health Care

Air Products & Chemical

Airline Hydraulics

Allstate Insurance Company

AmazonSmile Foundation

American Water

Ametek, Inc.

Amica Companies Foundation

Ann's Choice

Antheil, Maslow & MacMinn,
LLP

Aon Affinity Insurance

Apollos Family Pizzeria

Apostolate of Divine Mercy

Aqua America, Inc.

Arkema

AT&T

Avery Dennison Corp (Fasson)

Avient Corporation

Bank of America

Barra Foundation

BASF

Battelle

Bay Sales

BB&T

BBLA Foundation, Inc.

Benco Dental Supply Company

Bensalem School District

Boggs Chung, Inc.

Boscov's Department Store

**Big Brothers Big Sisters of
Bucks County**

Boeing Employees

Bristol Borough School District

Bristol Township School District

Bristol-Myers Squibb

Brooks Instrument (ITW)

**Bucks County Community
College**

**Bucks County Drug and Alcohol
Commission, Inc.**

Bucks County Foundation

Bucks County Housing Group

**Bucks County Intermediate Unit
#22**

**Bucks County Opportunity
Council, Inc.**

**Bucks County Technical High
School**

Bushnell/Toner Fund

Carroll Engineering Corporation

Caterpillar Foundation

Centric Bank

Ceridian

Centennial School District

Central Bucks School District

Charity Services Centers PA
Impact Deposits Corp.

Children's Developmental
Program

Christine's Garden of Beauty

CIGNA

Citizens Bank Foundation

CNG

Combined Federal Campaign

Comcast Cable

CommScope, Inc.

Congregation Brothers of Israel

Contemporary Music Group

Cordisco Law LLC.

Costco

**The Council of Southeast
Pennsylvania, Inc.**

Council Rock Education
Association

Council Rock School District

County of Bucks

Covenant Bank

Cummins Sales and Service

Customers Bank

David Thomas Photography

Delaware Valley University

Dow Chemical

Dryden Insurance

Eat'n Park Hospitality Group

Educational Testing Service

Enterprise Rent-A-Car

Estee Lauder Companies

Exelon

Exxon Mobil Research &
Engineer

Family Service Association of
Bucks County

Federal Express Corporation

Fegley Law Firm

First Bank

First Energy

First National Bank & Trust of
Newtown

Foundations Community
Partnership

Fred Beans Family of
Dealerships

Freedom House Recovery

Fulton Financial Corporation

Geisinger Health System

Genentech

Genuardi Family Foundation

Giant Food Stores, LLC

GlaxoSmithKline

GM Service Parts Operation

Goldman, Sachs & Company

Good Friends, Inc.

Google

Gormley Furlong Wealth
Advisory Group

Grace Episcopal Church

Great Northern Laminations

Guardian Life Insurance

Habitat for Humanity
of Bucks County

Hageman Giving Fund

Harold Beck & Sons, Inc.

Henkels & McCoy

Hyman Korman Family
Foundation

IBM Corporation

IDEXX Laboratories

Incyte Corporation

Independence Blue Cross

ING

Insaco Incorporated

Insight Pharmaceuticals
Corporation

Insurance Adjustment Bureau,
Inc.

ITW

J&J Consulting Association

J.C. Penney Company, Inc.

Jack and Jill of America, Inc.

Janssen Pharmaceutical, Inc.

Jewish Residents' Council

Johnson & Johnson, Inc.

Kampi Components Co., Inc.

Kellogg Company

Key Bank Foundation

Klover Wellness Team

KPMG

L3 Harris

Laboratory Corp. of America

**Langan Engineering &
Environmental**

Langhorne Presbyterian Church
– Board of Deacons

Libertae, Inc.

Lincoln Financial Group

Lockheed Martin

Lowe's

M & C Specialties Co. (ITW)

M&T Charitable Foundation

Thank you for making a difference.

Comcast NBCUniversal is proud to support the United Way of Bucks County.



COMCASTCORPORATION.COM



Macy's

Mar-Ian, Inc. T/A American Driving School
Marshall, Dennehey
McKnight Steel & Tube
Merck & Company, Inc.
Michael Antolino Construction, Inc.

Microsoft

Microwave Innovations, Inc.

Middle Bucks Institute of Technology

Morrisville School District

Nationwide Insurance Enterprise

Neshaminy School District

Network for Good
New Jersey Education Association
New Jersey Manufacturers Insurance Group
New Jersey State Employees Charitable Campaign
News Corp.
Newtown Business Association
Newtown United Methodist Church
Norman Raab Foundation

Northampton Township

Novartis
Novo Nordisk

Palisades School District

Pass Line Casino Parties

PECO

Penn Community Bank

Pennridge School District

Pennsbury Education Association
Pennsbury Education Support Professional Association
Pennsbury School District
Pennsylvania Dental Implant & Oral Surgery Assoc.

Peoples Security Bank & Trust Company
Pet Smart, Inc.

Peter Benz Landscaping Inc.
Pew Charitable Trusts

Pfizer International

Pitney Bowes

PNC Financial Services Group, Inc.

PPL Corporation

Price Waterhouse Coopers

Princeton University

Principal Financial Group

Prudential Insurance Co.

PSE&G

PVH Corp.

QNB

Qualcomm

Raymond James & Associates, Inc.

Redevelopment Authority of Bucks County

RICOH USA, Inc.

Rita Allen Foundation, Inc.

Robert T. Hanley Foundation

Robert Wood Johnson Foundation
Rostair Foundation

Salem United Church of Christ
Salesforce.com, Inc.
Sanofi

SDS Cares, Inc.

SEO Locale, Inc.

SEPA

ServiceNow

Sesame Place

ShopRite of Hunterdon County

Solvay

St. James Episcopal Church

St. Luke's Upper Bucks

St. Mary Medical Center

STD Associates, L.P.

Stellar Promotions

Students of Central Bucks School

Suez Water Technologies & Solutions

Susquehanna International Group LLP

SW Calkins Foundation

Target

Tatz Supplies LLC

TD Charitable Foundation

The Albert W Bader Foundation, Inc.

The Episcopal Church Redemption

The Grundy Foundation

TIAA

TIAA-CREF

Travelers

U. S. Bank

UGI Utilities

United Health Group

United Parcel Service

United States Steel

Universal Health Services, Pennsylvania, Inc.

Univest Corporation of PA

Upper Bucks Technical School

Valley Youth House

Vanguard Group

Verizon Foundation

Vistra Corp.

Walgreens

Wal-Mart

Warminster Fiberglass Co.

WAWA

Wegmans Food Markets, Inc.

Wells Fargo

Wesley Enhanced Living-Spiritual Life

Williams

Willow Wellness and Chiropractic Care of Doylestown

WSFS

YWCA of Bucks County

Collaboration

It's where
innovation
begins

DOW

®

How do you transform challenges into opportunities, redefine what's possible and help create a more efficient, more sustainable world at the same time? It takes collaboration, teamwork and a belief that the next breakthrough is only a moment of inspiration away.

Whether you partner with us like the United Way of Bucks County, work at Dow, or experience our materials in your favorite brands, we are relentlessly working to make the world and this community better. By listening and collaborating, we can find out what solutions are needed next.

Seek **Together™**

dow.com

©™Trademark of The Dow Chemical Company ("Dow") or an affiliated company of Dow.
© 2020 The Dow Chemical Company. All rights reserved.

THANK YOU To Our Leadership Donors

United Way of Bucks County Leadership Circles recognize and celebrate the vital importance of personal giving at exceptional levels. Members of our Leadership Circle are people of vision. Their community involvement creates solutions that shape tomorrow. The Leadership Circle is comprised of local leaders and community philanthropists whose gifts of \$500 or more impact the quality of life in our community. Many leadership donors also volunteer and provide guidance throughout the year and are tremendous influencers at workplace campaigns. We are deeply grateful for their support, generosity, and the impact they make in our community.

Alexis de Tocqueville Society

(\$100,000 and above)

Simon and Jane Hallett
The estates of David and Priscilla Stowe
(\$10,000 to \$99,999)
Ms. Marissa Christie and Mr. Carl Saalbach
Alex and Patricia Gorsky
Neil and Renee Hall
Ms. S.C. Hardy
Mr. and Mrs. Heiner Markhoff
Mr. and Mrs. John F. McCaughan
Catherine C. McElroy
Ann and Bill Olson
David Pocalyko
James F. Strunk Jr.
Jeane Vidoni

William Penn Society

(\$5,000 to \$9,999)

Mr. Kevin Cassidy
Margaret Dubell
Gene and Marlene Epstein
Mr. Michael Gallagher
Mr. John Griffin
Paul and Beth Mullen
Christopher Picariello
Mrs. Joanne and Mr. Michael Raphael
Mr. Kail C. Rion
Mr. Chris S. Scott
Ms. Natalie Solov

Vanguard Level

(\$2,500 to \$4,999)

Todd A. and Teresa C. Alderfer
Douglas Beck
Mr. John Bennett
Dr. Richard and Mrs. Anne Coe
Michael and Robin Connor
Mr. Brian T. Davies

Ms. Kristen Elder and Mr. William E. Angerer
Mr. Ralph E. Exton
Ms. Dawn M. Felix
Ms. Julie Frantz
Mr. Samuel Graham
Mr. Christopher Herbine
Mrs. Karen Johnson-Susko
Ms. Karen Keefe
Michael Keller
Timothy and Pat Kiorpes
Mr. Fred Lamb
Mrs. Anne Landis
Mr. Werner Liebig Jr.
Ms. Danielle Lustig
Mr. E. Harry McGuirk
Mr. Murray McKinnon
Mrs. Rebecca Menshen
Ms. Jessica and Mr. Kenneth T. Moore
Melissa Morello
Ms. Faith Parkinson
Mr. Douglas G. Placek
Mr. Robert and Mrs. Sheri Ratner
Mr. and Mrs. Harry Rose
Sara Stover
Mr. Timothy J. Tenhoeve
Ms. Rebecca Tillet
Mr. Brian Wheeler
Mr. and Mrs. Richard K. Wizeman
Mark and Mimi Worthington
2 Anonymous Donors

Silver Level

(\$1,500 to \$2,499)

Mr. Timothy Andrews
Frank Arrison
Mr. Jeffrey Baab
Mr. Neal Babcock
Ms. Michele Bell
Dan Benedict
Mr. Stephen Biddle
Tricia Blair
Ms. Joanne Boggett
Steven D. Boyd

Mr. Michael Boyle
Theodore Bredikin
Mr. Steve Bright
Mr. Albert Brown
Mr. and Mrs. Justin Brown
Mr. and Mrs. Norman Cohn
John Collier
Michael Comprelli
Patrick and Carol Counihan
Dwight and Jeri Davis
Timothy and Pat DiMario
Chad Dinerman
Ms. Ellen Diorio
Mr. Ron Dungan
Mr. Michael Durkin
Mr. James B. Erb
Mr. Michael Farabaugh
Mr. Kenneth Fein
Gary L. Fox
David and Arden Freeman
Mr. and Mrs. C. Theodore Fritsch Jr.
Mr. and Mrs. Steve Gallucci
Mr. Brian Gavin
David J. and Nancy Gondak
Mr. Bernard and Mrs. Evelyn Griga
Ms. Anasuya Hazra
Mr. A. David Horne
Chisoanya Ibegbu
Ms. Christine Janssen
Brian Jeter
Mr. and Mrs. Dennis M. Jones
Mr. David Kinsley
Ms. Karen Kirchner
Mr. Michael Kitchko
Mr. Mark Klaiber
Ms. Kimberley Lentz
Mr. Jay Markwald
Mr. Neal Matheson
Mr. James Matheson
Anna Marie Mauro
Mr. and Mrs. Philip McAloon
Ms. Jessica Miller
W. Martin Moran
Mr. Ronald Myers

Mr. Edward Oleynick
Ms. Maria Perez
Mr. Timothy Philpot
Mr. Matt Piserchio
Mrs. Susan and Dr. Stanley Plotkin
Mr. Ian M. Preddy
Mrs. and Mr. Claire Quinn
Ms. Geetika Ravela
Mr. Manohar Ravela
Monika Rector
Mr. Joseph Rickers
Mr. Robert Rosseau
Ms. Nancy S. Rush
Mr. Curtis Sawyer
Robert Shoemaker
Robert F. Smith
Ms. Ginger Solomon
Mr. and Mrs. Paul J. Stabile
David Thomas
Ms. Catherine Valeriano
Ms. Debra Wachspress
Mr. Markus Whitley
Ms. Theresa Wizemann
Mr. Arthur Zapolski
Kyle Zolnierz
4 Anonymous Donors

Bronze Level

(\$1,000 to \$1,499)

Mrs. Ann Arcari Albence
Mr. and Mrs. Gregory Anthos
Mr. Frank Antolino
Mr. Alexander Balagour
Joseph Baldassarre
Mr. Charles A. Bancroft
Matthew Barry
Dr. Steven M. Baxter
Michael Belasco
Mr. Charles K. Booda III
Lauren Bowman
Mr. Andrew Brackbill
Mr. Kevin Bradley
Mr. Jay Brodish
Ms. Elizabeth Bullock
Mr. Craig A. Bunce

Donna B. Cochran
Mr. Robert Coffin
Mr. Arthur Cohn
Neta Collier
Mrs. Renata Cortes
Ms. Dinorah Craven
Mr. and Mrs. Kevin J. Crawford
Mr. Lewis Cyr
Mr. Andrew Dell
Mrs. and Mrs. John Dougherty
Mr. Jeffrey Durachta
Mr. and Mrs. Paul Allan Elzinga
Mr. Walter Epp
Mr. Patrick Eves
Mr. Joseph Fabrizio
Mr. Charles Field
Ms. Margaret Forrestel
Mr. Eric Franco
Mr. John Gabkee
Mr. Shawn Gibson
Ms. Barbara Glover
Mrs. Candida Guerrero
Mr. Larry P. Hageman
Pekka Hakkarainen
Mr. Joseph P. Halpin
Mr. Robert Hamilton
Mr. Robert T. Hanley
Ms. Daphne Hayes
Jessica Herzog
Dr. Rachel Holler
Ms. Kristin Holmes
Bruce and Marti Iacobucci
Dorothy Jaworski
Mr. Thomas Kaufmann
Mr. Gary Keegan
Mrs. Annette Kelton
Ms. Sallie Kingham
Mr. Robert Kleinmans
Ms. Karen Kunin
Mr. Richard Lamontagne
Mr. William P. Larkin Jr.
Ms. Madeline Leach
Dawn Leip

Powering Communities.

At PECO, we are committed to supporting the communities we serve. That is why we advocate for equal access to education, arts and culture and workforce programs, providing more than \$6 million a year to local community partners and nonprofit organizations across our region.

PECO is proud to support the United Way of Bucks County in their tireless efforts to build a stronger tomorrow together.



An Exelon Company

peco.com



© PECO Energy Company, 2021.

Bronze Level (continued)
(\$1,000 to \$1,499)

Douglas Lejambre
Ms. Kimberley Lentz
Mr. Hiram Levy II
Mr. John Lloyd
Martha Loerke
Mary Love
Mr. Sandra Lowery
Ms. Catherine Lynch
Ms. Mary Jane Maley
Mr. Vince J. Mandes
Ms. Colleen Matuszewski
Ms. Donna McQuillen
Mr. Kenneth J. Meehan
Ms. Mary K. Meiners
Mr. Scott D. Mittl
Ms. Jeanette A. Monaghan
Mr. Gary Munkelt
Mr. James M. Nemecek
Ms. Cherilyn Nichols
Mr. Thomas J. Ohntrup
Mary Orzechowski
Mr. Ronald Painter
Ms. Stacy Pakula
David Palmer
Melissa Paparone
Mr. and Mrs. Brian Papsun
Mrs. Cathleen & Mr. Gary Plefka
Rakesh Raina
Mr. Geoffrey S. Roman
Ross Charitable Fund
Ms. Donna Rowland
Mr. Bryan Sandmann
Jennifer Schlosberg
Ms. Stephanie Schwartzberg
Dr. Steve and Laurie Shute
Yuvbir Singh
Mr. Elan Strominger
Mr. James Susko
Ms. Natalie Tapytkoff
Michelle Tunkara
Kelly Turner
Ms. Kaitlyn Vanderlaan
Alice and Robert Vernon
Ms. Catherine M. Villella
Ms. Kristin M. Wall
Mr. Thomas M. Willis Jr.
Bruce Wolfe
Mr. Paul Woods
Mr. Colin Worrich
Edward Wurster
3 Anonymous Donors

Emerging Leadership
Donors (\$500 to \$999)

James Alford
Ms. Rita Allen
Ms. Beth Anderson
Mrs. Michele Anderson

Natalie Andrews
Mr. Els Baldewijns
Ms. Stephanie Bamert
Mr. Michael Ban
Ms. Joanne Banko
Mrs. Diane Barndt
Mr. Mark Barr
Ms. Jean Barrell
Mr. Robert D. Beck
Mr. Paul Bencivengo
Mr. Glenn Berger
Mr. Adrian D. Berger-Ettenson
Ms. Deborah Bernhardt
Ms. Linda Beyerle
Mr. James Blore
Mrs. Janina Bobak
Ms. Joan Bogan
Ms. Lisa Bohner
Mr. Jason Boor
Ms. Lori Borman
Mrs. Hilegarde Bothwell
Mrs. Denise Bowman
Ms. Patricia Breslin
Mr. Joseph Brogan Jr.
Mr. Patrick H. Brogan
Ms. Diane Brown
Ms. Andreina Bruno
Mr. Jason Bundick
Ms. Joanne Burke
Roanna Burnell
Mr. Thomas Burns
Ms. Lynn Bush
Ms. Dawn Byers
Ms. Laura Cakolli
Joseph Carman
Mr. Arthur P. Chin
Ms. Elizabeth Chodelka
Ms. Theresa Christian
Kelly Cohen
Joyce Cohen
Ms. Elyse Cole
Mr. Nelson Colon, Jr.
Ms. Bridget C. Connell
Mr. Jay Creekmore
Ms. Jane L. Daveler
Kirk Davis
Ms. Karen Dawkins
Ryan DeBlass
Ms. Veronica Dedegbe
Mr. Charles DePalma
Mr. and Mrs. Kevin Devaney
Melanie Dickersbach
Mr. Edward Dixon
Ms. Ellen Dodel
Ms. Courtney Donnelly
Mr. Alan Eckert
Ms. Elva M. Edwards
Jessica Every
Ms. Laura Falcon
Michele Falino
Karen Fein

Mr. Qiuwei Feng
Ms. Maureen E. Fishel
Mr. John Flaherty
Mrs. Megan Fraser
Ms. Kathy Frazier
Mr. Richard P. Fry Jr.
Mr. Christopher G. Gage
Ms. Sally Gaines-Thompson
Ms. Joan Garber
Kristen Garufi
Mr. David Gilbert
Mr. Casey Gilboy
Ms. Gayle Goodman
Mr. Justin Goodnow
Mr. Stephen Goshorn
Mr. Paul Noble Gould
Falesha Grasty
Mr. Leonard Greaney
Ms. Christina Greenwood
Mrs. Margaret Grubbs
Ms. Donna J. Gruber
Dr. Phillip Halper
Ms. Patricia Hancock
Mr. Joseph Handoe
Ms. Gail Hardesty
Mr. David W. Harper
Mr. Todd Hazelkorn
Ms. Linda M. Hein
Mr. David Hendricks
Ms. Kathleen Hiban
John Hoffman
Mrs. Janice Holt
Allison Howe
Ms. Youiree G. Im
Mr. David Johnson
Ms. Deborahlee H. Johnson
Mr. Matthew Joniec
Sharon Kahn
Ms. Kathryn Kausch
Peter Keenan
Mr. Peter Kelley
Mr. Larry Kelley
Ms. Diane Kelley
Mr. Carl Kessler
Mr. Carl Kiedaisch
Ms. Dorothy Knaus
Mr. Robert Kokstein
Mr. Michael Krejsa
Mrs. Karen Y. Krier
Mr. John Lamelza
Ms. Lisa Larks
Mr. James E. Lasky
Mrs. Karen Lasorda
Ms. Michaelleen Lee
Mr. James Li
Mrs. Mary E. Liddle
Mr. William Liptrot
Ms. Debora Lounsberry
Ms. Lauren Lowery
Mr. Robert Lucot
Mrs. Erin Lukoss
Ms. Kathleen Mahan

Mr. Chris Manna
Ms. Pamela Martino
Mr. Edward Masarsky
Mary Maul
Leonard Mazzanti
Ms. Bonnie McCabe
Ms. Kathleen M. McCammitt
Ms. Marcy McGann
Mr. John McGovern
Marion McKairnes
Dr. Dorothy McMullen
Ms. Carol McNiff
Lisa Medeiros
Mr. Michael A. Mee
Mr. Kenneth A. Meyers
Mrs. Barbara Miguelez
Mr. Matthew Mikulski
Mr. Michael D. Miller
Mrs. Eleanor Miller
Ms. Karen Millison
Ms. Darla Millstein
Ms. Betsy Moore
Mr. Tomas Morales
Mr. Matthew Murray
Ms. Donna Nicholson
Mr. Dennis Nolan
Mrs. Stephanie Olexa and Mr. Seth Weber
Mr. Thomas Omerza
Doug Oswald
Ms. Stacy Pakula
Mr. Andrew Park
Ms. Deborah Perelmuter
Mr. and Mrs. Laurence Philpot
Ms. Laura Plantz
Elizabeth Plimack
Mr. Peter Ponzio
Mr. Gerald Potts
Ms. Mary Powell
Elinor Pressel
Mr. Christopher Pulak
Ms. Tammy Rambaldi
Ms. Susan Rattigan
Mr. Marc Ray
Mr. Doug Reed
Milan Reichbach
Mrs. Patricia A. Reid
Mr. Charles J. Reifsneider
Laurence Reilly
Mr. Bruce Repasy
Mr. Michael F. Rettig
Mr. Roger Ricklin
Mr. Richard K. Robertson
Ms. Margaret Robinson
Ms. Ernestina Rodriguez
Ms. Kathleen Rue
Mr. Paul Sacchetti
Ms. Hara Salkovitz
Mr. John R. Scheetz
Mr. Gary Schiff

Mr. Thomas Seiler
Ms. Shawna Lee Seltzer
Ms. Judith Seymour
Mr. Saad A. Shamsi
Kristy Shaulis
Mary Sheffler
Mrs. Judy Sherk Cohen
Ms. Kay Silberfeld
Mr. Sheldon Simon
Mr. William Smizaski
Ms. Karen Snedeker
Mr. Michael Sneed
Mr. Thomas Stanley
Ms. Tricia A. Stapf
Ms. Janine Stevens
Ms. Rebecca Stuart
Ms. Jessica X. Su and Mr. Ping Cao
Sybil Swanson
Wayne Tallman
Mr. Leon Tan
Tracy Tanner
Ms. Tamika Thomas
Mrs. Margaret E. Thurber
Ms. Barbara Tiberio
Ms. Melissa Tomlinson
Mr. Peter Torres
Mr. Frank Trocino
Jennifer Unrath
Mr. Andrew VanDyke
Mr. Robert Vining
Ellen Vitelli
Ms. Anne Walker
Ms. Raquel M. Walton
Mr. Stephen Waterson
Mr. Paul W. Weeks
Ms. Virginia Weinle
Mr. Steven A. Wells
Alexander Whitman
Mr. Robert Williams
Mrs. Mary S. Wodarski
Mr. Dennis Wysocki
Maria Yang
Mrs. Stephanie Zajkowski
Mr. Michael Zampirri
Mr. Tracy Zimmerman
3 Anonymous Donors

**List based on donation records available at time of printing. Gift amounts include corporate matches when appropriate and represent gifts from the 2020 campaign year. We have made every effort to ensure the accuracy of this document. If an error or omission has occurred, please contact Faith Parkinson at faithp@uwbucks.org.*

QNB – Your Community Bank

We're here to serve *you!*



Whether you prefer to do your banking in-person, from your car or online, QNB is always ready to serve you. From in-person to 24/7 online service, discover a better banking experience with a true community bank.

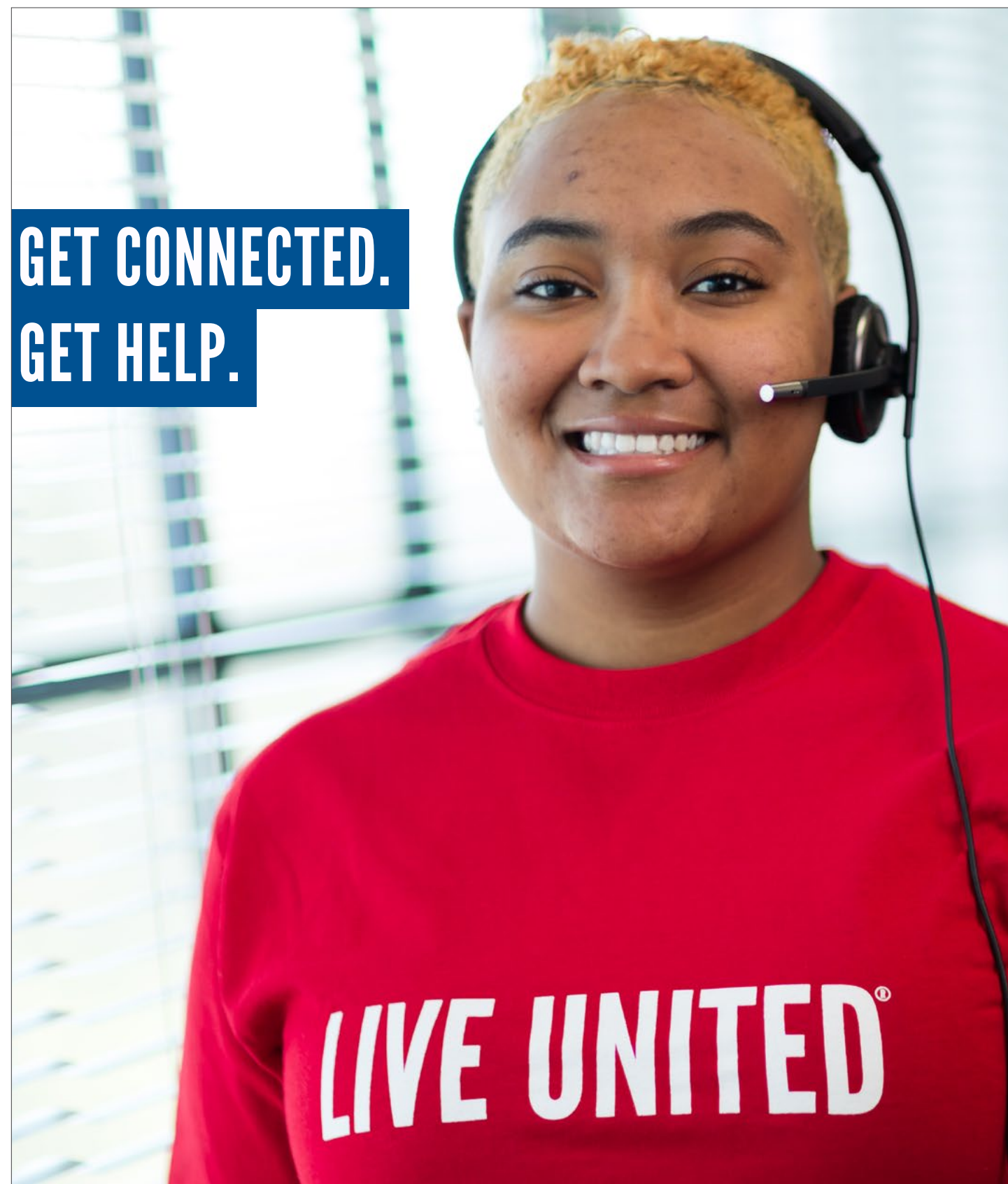


☎ 215-538-5600 🖥 QNBbank.com

🏢 Visit any of our 12 offices in Allentown, Colmar, Coopersburg, Dublin, Perkasio, Quakertown, Souderton, Upper Perkiomen Valley, Warminster & Wescosville



GET CONNECTED.
GET HELP.



24 hours a day. 7 days a week. 365 days a year. Free, confidential, multilingual information & referrals to Bucks County services.

Call (211), text your zip code to (898-211) or visit 211 online to connect with a call specialist. www.211sepa.org





SUEZ – Water Technologies & Solutions
is proud to **support** our communities
through the **United Way**.

